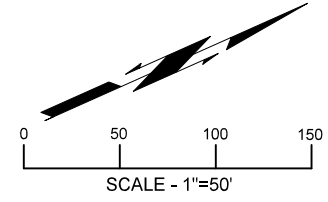


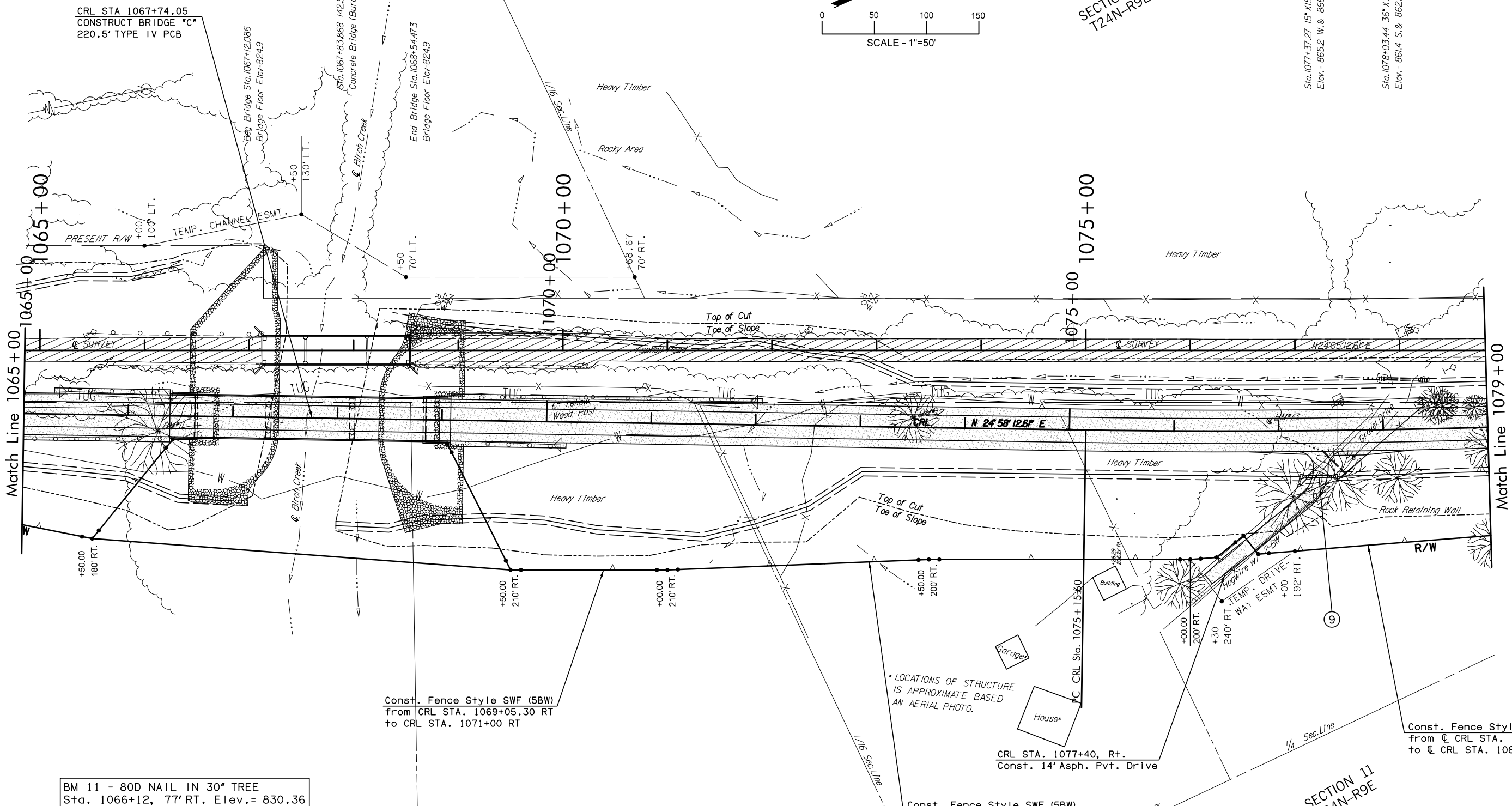
FED. ROAD DIST. NO.	STATE	PROJ. NO.	FISCAL YEAR	SHEET NO.	TOTAL SHEETS
	OKLA.				
DESCRIPTION		REVISIONS		DATE	



SECTION 11
T24N-R9E

Sta. 1077+37.27 15" X 15X32" Steel
Elev. = 865.2 W. & 866.2 E.

Sta. 1078+03.44 36" X 36X51" CMP
Elev. = 861.4 S. & 862.2 N.



CRL STA 1067+74.05
CONSTRUCT BRIDGE *C*
220.5' TYPE IV PCB

Begin Bridge Sta. 1067+12.086
Bridge Floor Elev. = 824.9

Sta. 1067+83.868 142.5' X 28.4'
Concrete Bridge (Burch Creek)

End Bridge Sta. 1068+54.473
Bridge Floor Elev. = 824.9

Match Line 1065+00

Match Line 1079+00

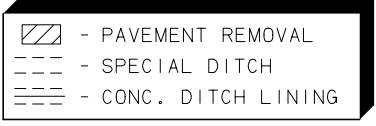
- BM 11 - 80D NAIL IN 30" TREE
Sta. 1066+12, 77' RT. Elev. = 830.36
- BM 12 - 80D NAIL IN 22" TREE
Sta. 1073+35, 64' RT. Elev. = 846.60
- BM 13 - 80D NAIL IN 28" TREE
Sta. 1076+76, 68' RT. Elev. = 863.16

Const. Fence Style SWF (5BW)
from CRL STA. 1069+05.30 RT
to CRL STA. 1071+00 RT

* LOCATIONS OF STRUCTURE
IS APPROXIMATE BASED
ON AERIAL PHOTO.

CRL STA. 1077+40, Rt.
Const. 14' Asp. Pvt. Drive

Const. Fence Style WWF
from CRL STA. 1076+80.14 RT
to CRL STA. 1080+67.74 RT



DESIGN	
DRAWN	
CHECKED	
APPROVED	
SQUAD	

OKLAHOMA DEPARTMENT OF TRANSPORTATION
DESIGN DIVISION
SH-99 OVER BIRCH CREEK OSAGE COUNTY
STATE HIGHWAY 99 PLAN
STATE JOB NO. 24261(04) SHEET NO. 59
OSAGE CO. SH-99