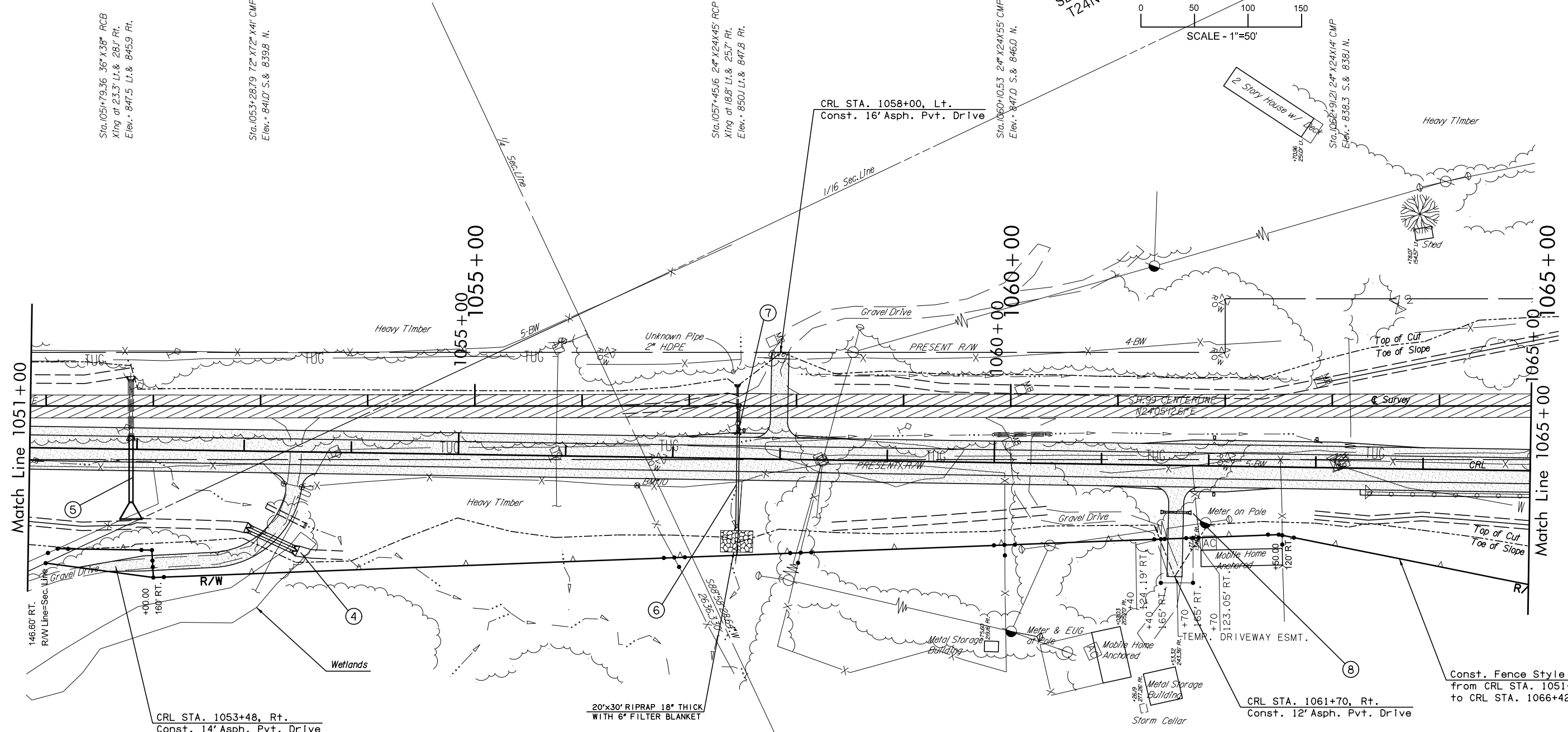
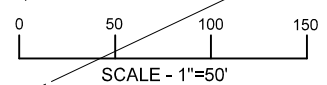


OKLAHOMA DEPARTMENT OF TRANSPORTATION					
FED. ROAD DIST. NO.	STATE	PROJ. NO.	FISCAL YEAR	SHEET NO.	TOTAL SHEETS
	OKLA.				
DESCRIPTION			REVISIONS		DATE



	- PAVEMENT REMOVAL
	- SPECIAL DITCH
	- CONC. DITCH LINING

BM 10 - 80D NAIL IN 18" TREE
Sta. 1056+52, 74' RT. Elev.= 848.67

DESIGN		OKLAHOMA DEPARTMENT OF TRANSPORTATION	
DRAWN		DESIGN DIVISION	
CHECKED		SH-99 OVER BIRCH CREEK	OSAGE COUNTY
APPROVED		STATE HIGHWAY 99 PLAN	
SQUAD		STATE JOB NO. 24261(04)	SHEET NO. 57

OSWR: KXX PLOTTED BY: loyds@okdot.gov 6/9/2017 8:45:31 AM
 S:\2006\000\000\000\00-C-Plan05.dgn