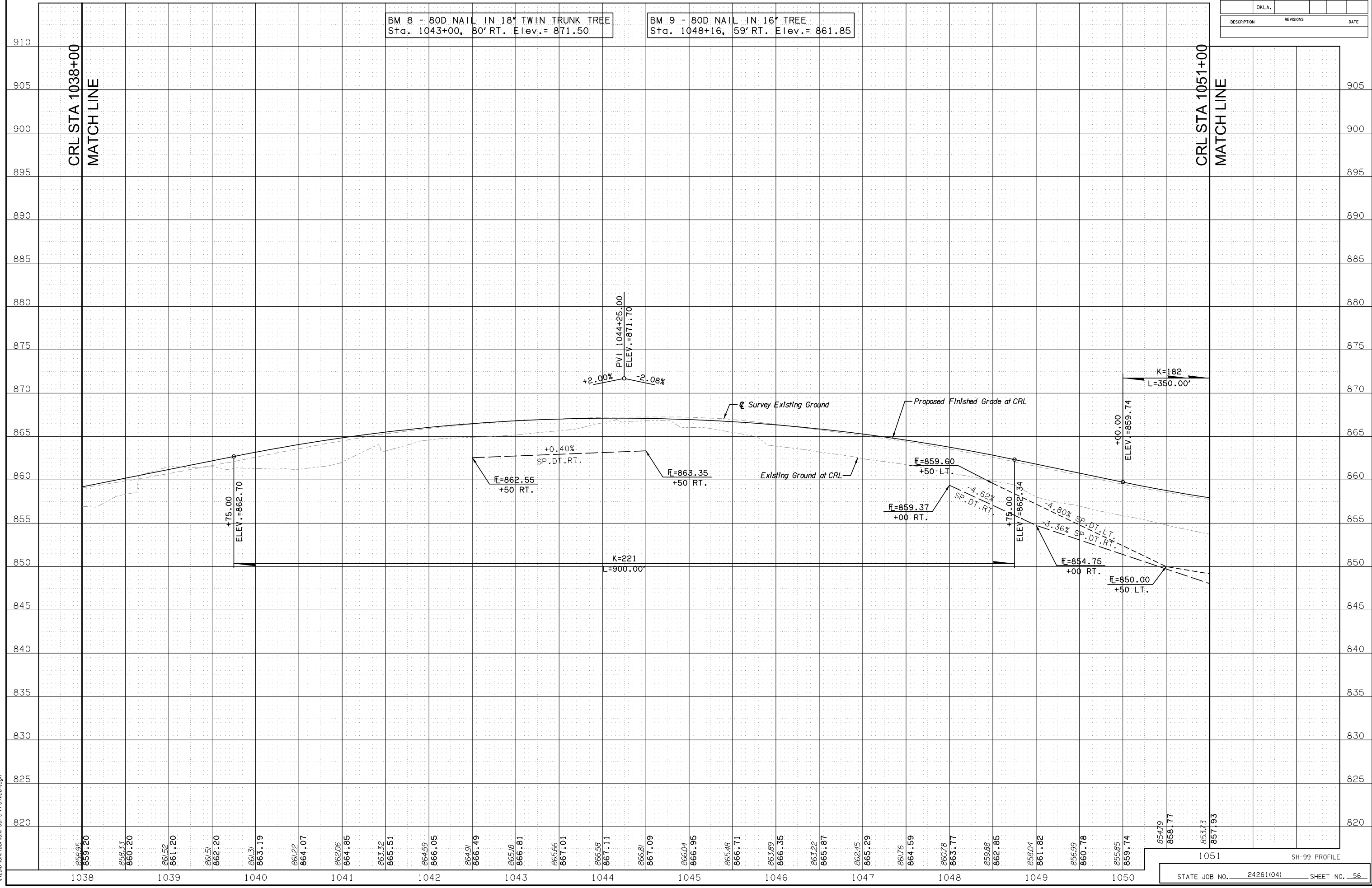


BM 8 - 80D NAIL IN 18" TWIN TRUNK TREE
Sta. 1043+00, 80' RT. Elev.= 871.50

BM 9 - 80D NAIL IN 16" TREE
Sta. 1048+16, 59' RT. Elev.= 861.85



DSWR: MKX PLOTTED BY: Joyce.Graham 6/19/2017 11:45:30 AM
 I:\2010\OKM\1001\001-00-C-Profiles.dgn