

**NOTE TO CONTRACTOR**  
 ITEMS TO BE REMOVED MAY OR MAY NOT BE PRESENT IN ANY SPECIFIED CONDITION.

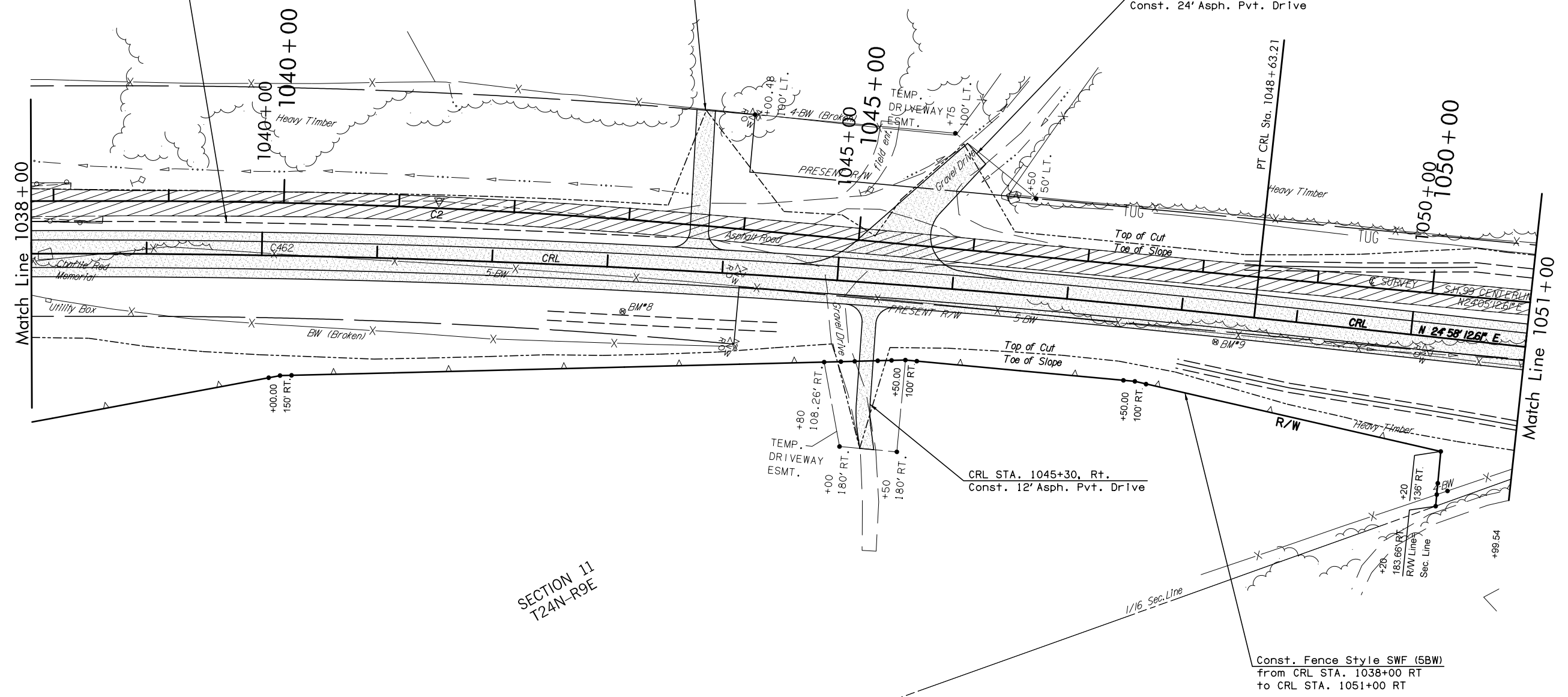
PARCEL	STATION No.	IMPROVEMENT
4	1043+90 to 1044+00 LT 80'-90' CLS SH-99	REMNANTS FROM OLD 18" CONCRETE DRAIN

CURVE C462	CURVE C2
PI CRL STA. 1040+18.95	PI Survey STA. 1041+34.83
N-574,977.4870	N-575,099.9224
E-2,463,283.3168	E-2,463,318.2340
$\Delta=10^{\circ}12'00''$ (RT)	$\Delta=05^{\circ}19'00''$ (RT)
D=00'36" 08.93"	D=00'59" 59.99"
R=9,510.00'	R=5,729.60'
T=848.74'	T=266.03'
L=1,693.00'	L=531.67'
E=37.80'	E=6.17'
SE=2.0%	

CRL STA. 1037+00 TO  
 CRL STA. 1043+50  
 CONST. TEMP. 'V' DITCH  
 SEE CROSS SECTIONS  
 FOR ELEVATIONS

CRL STA. 1043+80, Lt.  
 Const. 16' Asph. Pvt. Drive

CRL STA. 1045+31, Lt.  
 Const. 24' Asph. Pvt. Drive



BM 8 - 80D NAIL IN 18" TWIN TRUNK TREE  
 Sta. 1043+00, 80' RT. Elev.= 871.50

BM 9 - 80D NAIL IN 16" TREE  
 Sta. 1048+16, 59' RT. Elev.= 861.85

	- PAVEMENT REMOVAL
	- SPECIAL DITCH
	- CONC. DITCH LINING

DESIGN		OKLAHOMA DEPARTMENT OF TRANSPORTATION DESIGN DIVISION	
DRAWN		SH-99 OVER BIRCH CREEK OSAGE COUNTY	
CHECKED		STATE HIGHWAY 99 PLAN	
APPROVED		STATE JOB NO. 24261(04) SHEET NO. 55	
SQUAD		OSAGE CO. SH-99	

DSWR: XXX PLOTTED BY: loyds@okdot.gov 6/9/2017 10:00:00 AM  
 6:12:00 PM 10/01/2017 10:00:00 AM C:\Plan04.dgn