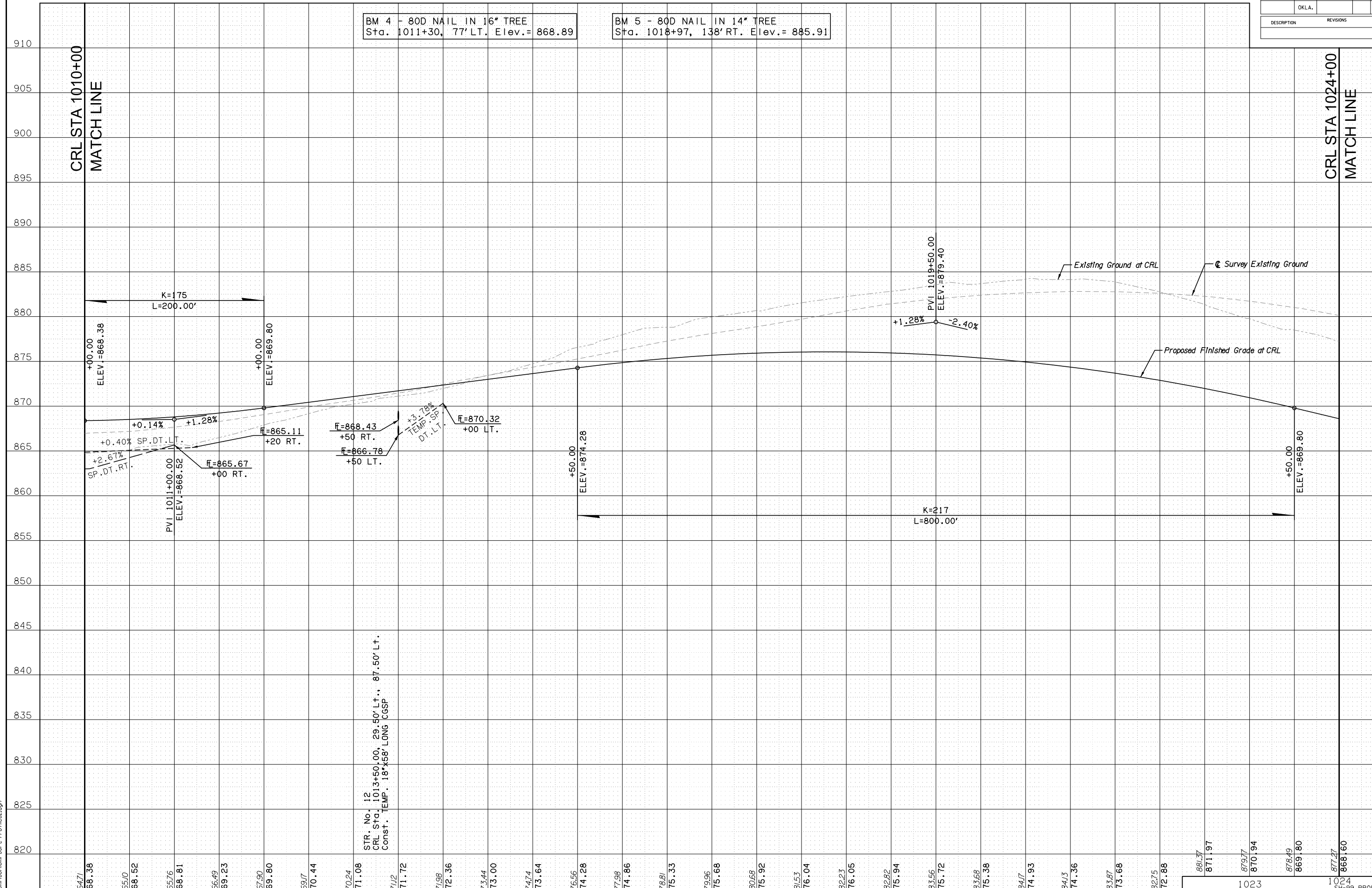


BM 4 - 80D NAIL IN 16" TREE
Sta. 1011+30, 77' LT. Elev.= 868.89

BM 5 - 80D NAIL IN 14" TREE
Sta. 1018+97, 138' RT. Elev.= 885.91



STR. No. 12
CRL Sta. 1013+50.00, 29.50' Lt., 87.50' Lt.
Const. TEMP. 18°x58' LONG CGSP

868.38
865.00
868.52
865.76
868.81
866.49
869.23
867.90
869.80
869.77
870.44
870.24
871.08
871.72
871.98
872.36
873.44
873.00
874.74
873.64
876.56
874.28
877.98
874.86
878.81
875.33
879.96
875.68
880.68
875.92
881.53
876.04
882.23
876.05
882.82
875.94
883.56
875.72
883.68
875.38
884.77
874.93
884.13
874.36
883.87
873.68
882.75
872.88
881.37
871.97
879.77
870.94
878.49
869.80
877.27
868.60

1023 1024
ST-99 PROFILE

STATE JOB NO. 24261(04) SHEET NO. 52

DSWR: MKX PLOTTED BY: Joyce.delaney 6/9/2017 11:45:25 AM
 I:\2010\OKM\1001\001-00-C-Profiles02.dgn