

OKLAHOMA DEPARTMENT OF TRANSPORTATION					
FED. ROAD DIST. NO.	STATE	PROJ. NO.	FISCAL YEAR	SHEET NO.	TOTAL SHEETS
	OKLA.				
DESCRIPTION		REVISIONS		DATE	

SECTION CORNER - Found and accepted a BLM Brass Monument recently established by a cadastral surveyor of the Bureau of Land Management. No previous corner record was filed for this location.

1/4 SECTION CORNER - Found and accepted a No.6 Bar at location. Monument appears to be in harmony with the surrounding improvements. No previous corner records were filed for this location.

SECTION CORNER - Found and accepted a BLM Brass Monument recently established by a cadastral surveyor of the Bureau of Land Management. Found one reference from a previously filed corner record.

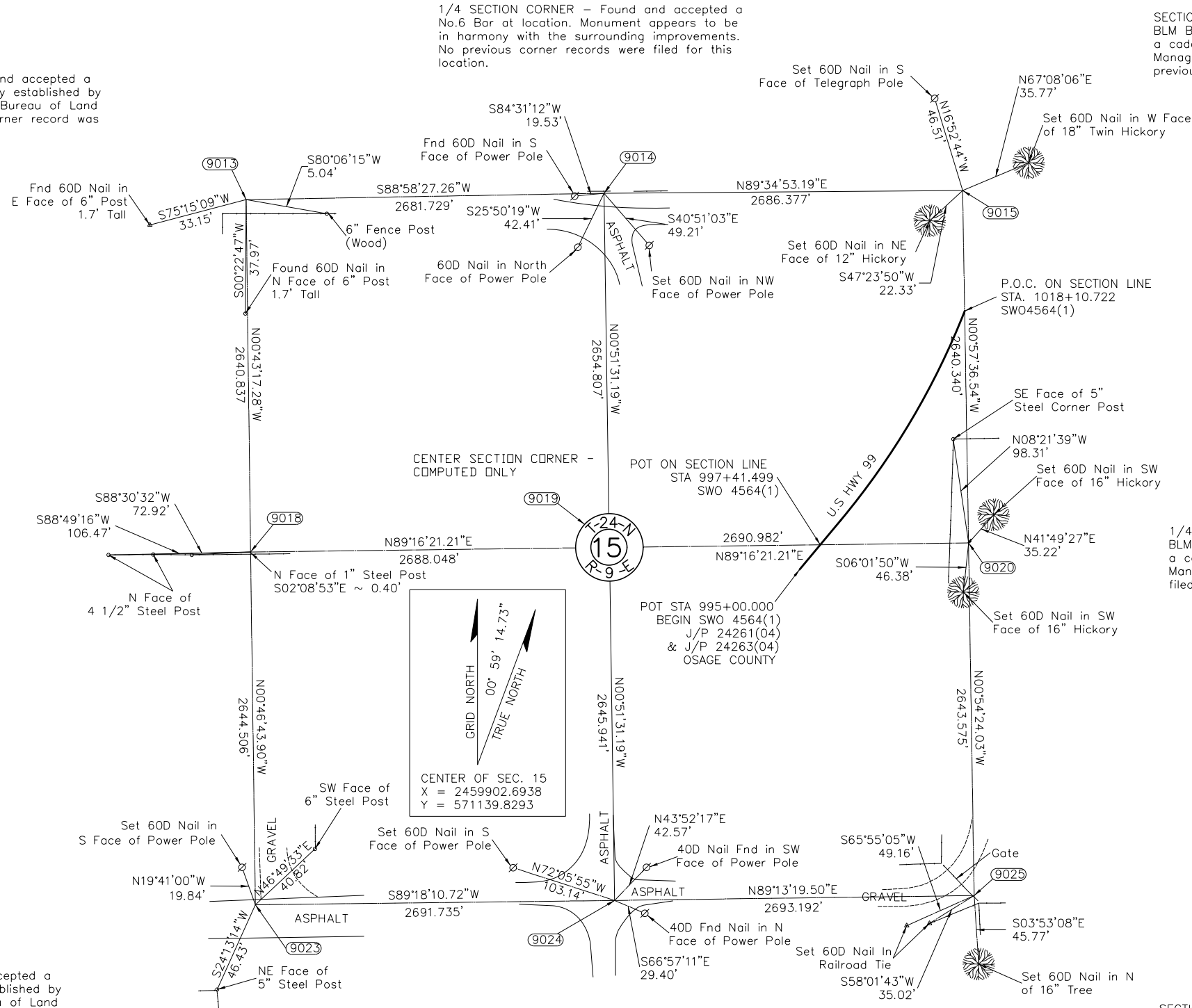
1/4 SECTION CORNER - Found and accepted a 1908 GLO Brass Monument at location. No previous corner records were filed for this location.

1/4 SECTION CORNER - Found and accepted a BLM Brass Monument recently established by a cadastral surveyor of the Bureau of Land Management. No previous corner record was filed for this location.

SECTION CORNER - Found and accepted a BLM Brass Monument recently established by a cadastral surveyor of the Bureau of Land Management. No previous corner record was filed for this location.

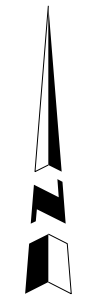
1/4 SECTION CORNER - Found and accepted a BLM Brass Monument recently established by a cadastral surveyor of the Bureau of Land Management. No previous corner record was filed for this location.

SECTION CORNER - Found and accepted a BLM Brass Monument recently established by a cadastral surveyor of the Bureau of Land Management. No previous corner record was filed for this location.



GRID NORTH
TRUE NORTH
00° 59' 14.73"

CENTER OF SEC. 15
X = 2459902.6938
Y = 571139.8293



SCALE:
1" = 500'

NOTE: REFERENCE'S SHOWN ARE NOT TO SCALE

OKLAHOMA DEPARTMENT OF TRANSPORTATION DESIGN DIVISION		OSAGE COUNTY	
PLS	JMH	SH-99 OVER BIRCH CREEK	
DRAWN	TG	SURVEY DATA SHEET	
CHECKED	JMH	STATE JOB NO. 2426(104) SHEET NO. 22	
APPROVED		OSAGE CO.	
CREW	PT,JF,CF,SA	SH-99	