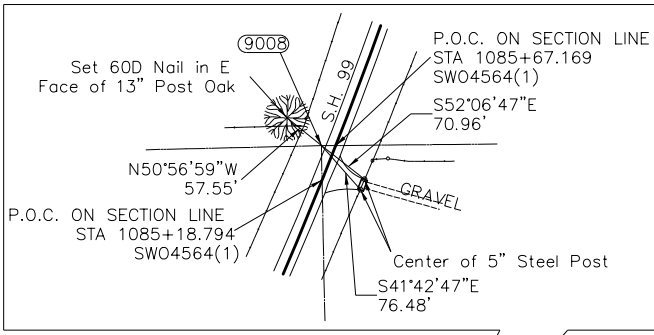
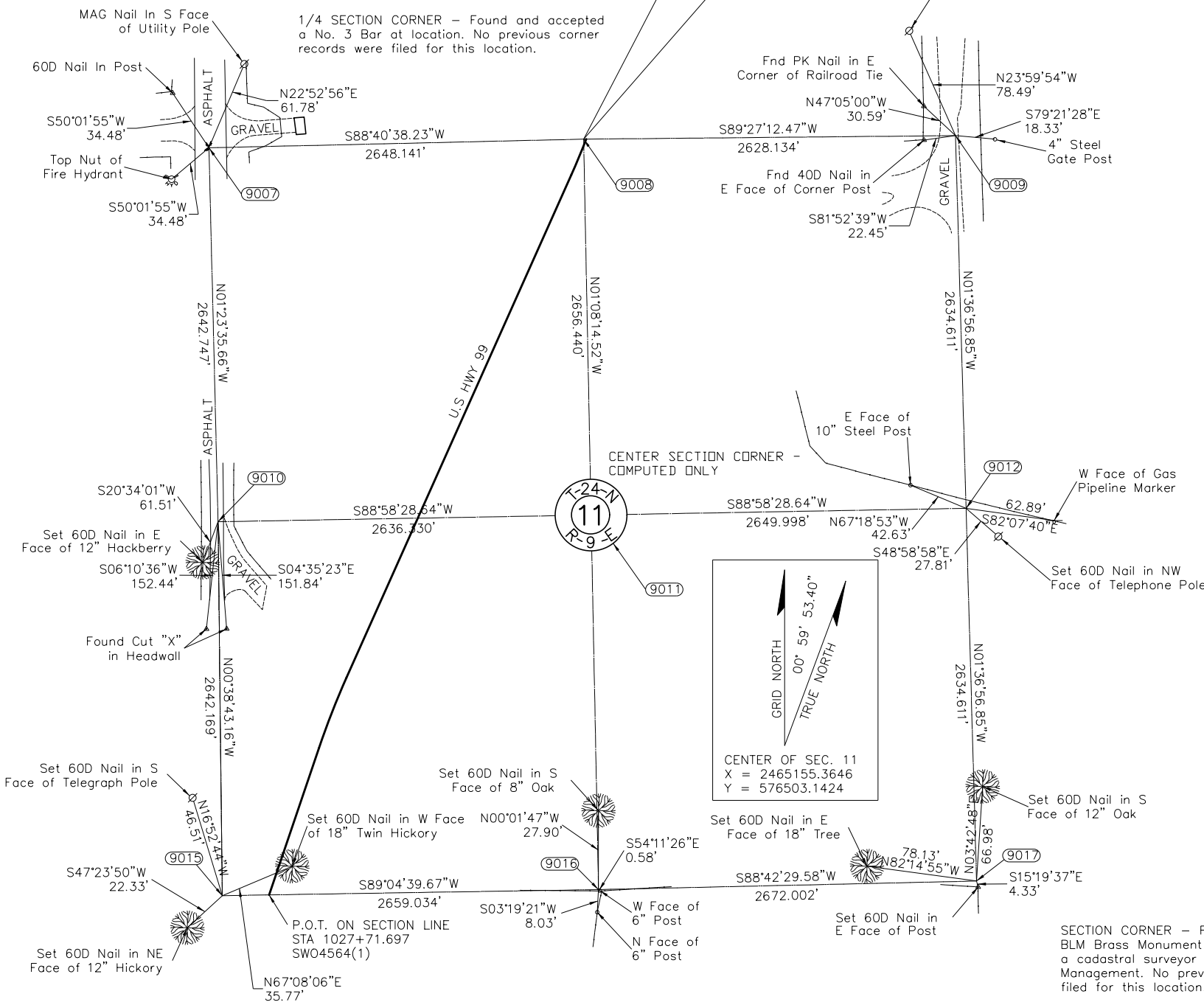


OKLAHOMA DEPARTMENT OF TRANSPORTATION						
FED. ROAD DIST. NO.	STATE	PROJ. NO.	FISCAL YEAR	SHEET NO.	TOTAL SHEETS	
	OKLA.					
DESCRIPTION		REVISIONS		DATE		

SECTION CORNER - Found and accepted a BLM Brass Monument recently established by a cadastral surveyor of the Bureau of Land Management. Location fits previously filed reference. Also found 2 references from a previously filed corner record.



SECTION CORNER - Found and accepted a Brass monument at location. Monument surface is not readable but parts of it appear to read "ODOT".



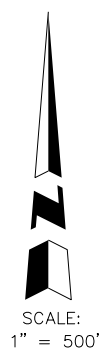
1/4 SECTION CORNER - Found and accepted a BLM Brass Monument recently established by a cadastral surveyor of the Bureau of Land Management. No previous corner record was filed for this location.

1/4 SECTION CORNER - Set #4 Bar with Cap "CA 2054" at location. This corner was re-established using single proportionate method from monuments north/south. No previous corner records were filed for this location.

SECTION CORNER - Found and accepted a BLM Brass Monument recently established by a cadastral surveyor of the Bureau of Land Management. Found one reference from a previously filed corner record.

1/4 SECTION CORNER - Found and accepted a BLM Brass Monument recently established by a cadastral surveyor of the Bureau of Land Management. No previous corner record was filed for this location.

SECTION CORNER - Found and accepted a BLM Brass Monument recently established by a cadastral surveyor of the Bureau of Land Management. No previous corner record was filed for this location.



NOTE: REFERENCE'S SHOWN ARE NOT TO SCALE

PLS	JMH	<b>OKLAHOMA DEPARTMENT OF TRANSPORTATION</b> <b>DESIGN DIVISION</b> SH-99 OVER BIRCH CREEK OSAGE COUNTY <b>SURVEY DATA SHEET</b> STATE JOB NO. 2426(104) SHEET NO. 21 OSAGE CO. SH-99
DRAWN	TG	
CHECKED	JMH	
APPROVED		
CREW	PT,JF,CF,SA	