

OKLAHOMA DEPARTMENT OF TRANSPORTATION					
FED. ROAD DIST. NO.	STATE	PROJ. NO.	FISCAL YEAR	SHEET NO.	TOTAL SHEETS
	OKLA.				
DESCRIPTION		REVISIONS		DATE	

SECTION CORNER - Found and accepted a No. 3 Bar at location. Location fits previously filed reference.

1/4 SECTION CORNER - Found and accepted a No. 3 Bar with cap stamped "JR PLS 1614" at location. No previous corner record was filed for this location.

SECTION CORNER - Found and accepted a BLM Brass Monument recently established by a cadastral surveyor of the Bureau of Land Management. A corner record was filed for this location, however, no references were found.

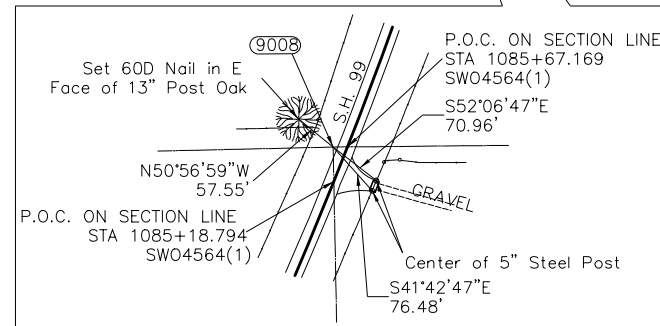
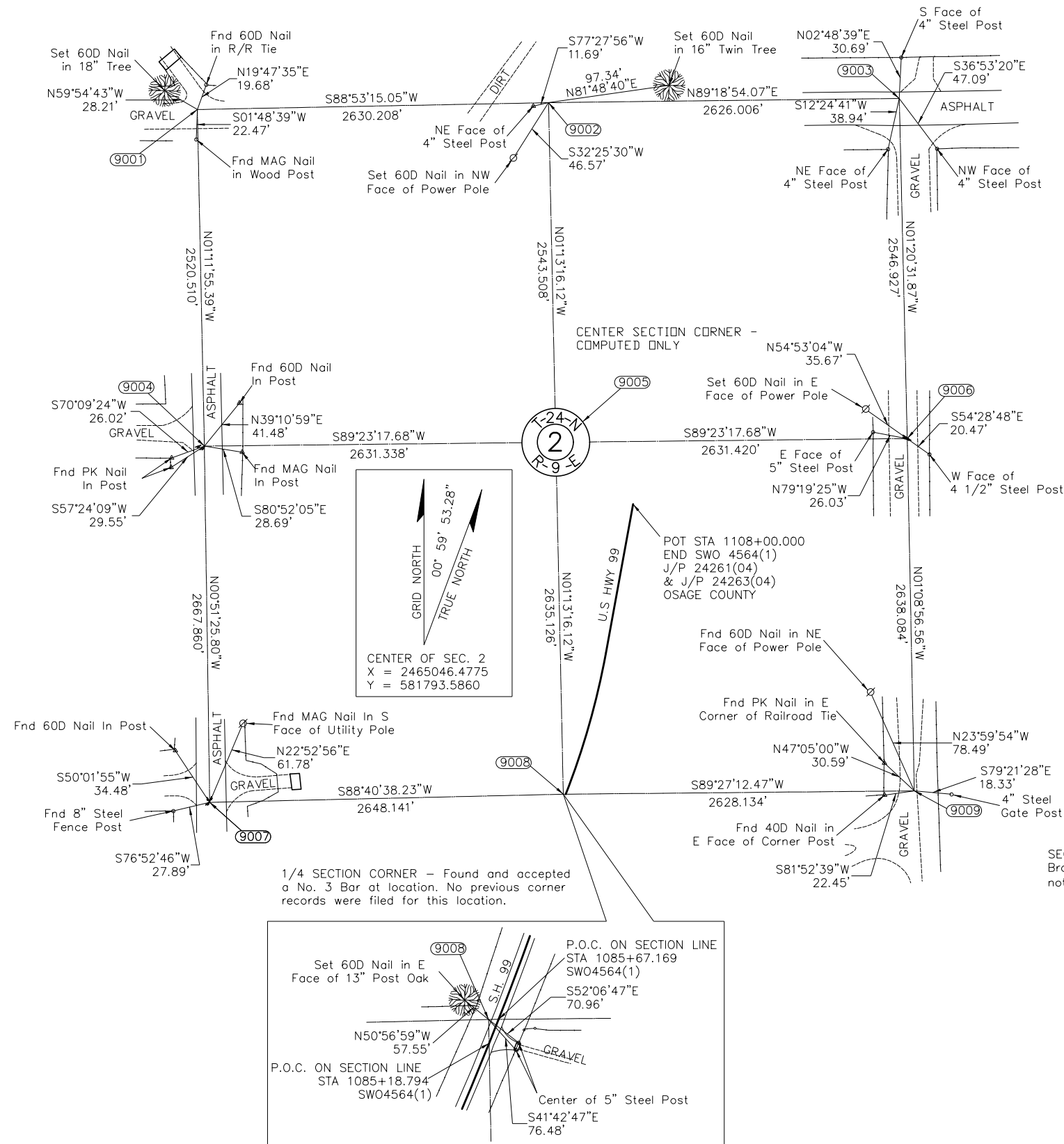
1/4 SECTION CORNER - Found and accepted a BLM Brass Monument recently established by a cadastral surveyor of the Bureau of Land Management. No previous corner references were found that matched the accepted location.

1/4 SECTION CORNER - Found and accepted a No. 3 Bar at location. A corner record was filed for this location, however, no references were found.

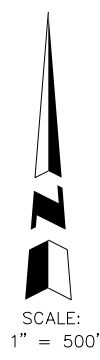
SECTION CORNER - Found and accepted a BLM Brass Monument recently established by a cadastral surveyor of the Bureau of Land Management. Location fits previously filed reference. Also found 2 references from a previously filed corner record.

1/4 SECTION CORNER - Found and accepted a No. 3 Bar at location. No previous corner records were filed for this location.

SECTION CORNER - Found and accepted a Brass monument at location. Monument surface is not readable but parts of it appear to read "ODOT".



NOTE: REFERENCE'S SHOWN ARE NOT TO SCALE



OKLAHOMA DEPARTMENT OF TRANSPORTATION			
DESIGN DIVISION			
PLS	JMH		
DRAWN	TG		
CHECKED	JMH		
APPROVED			
CREW	PT,JF,CF,SA		
		SH-99 OVER BIRCH CREEK OSAGE COUNTY	
		SURVEY DATA SHEET	
		STATE JOB NO. 24261(04) SHEET NO. 20	
		OSAGE CO. SH-99	