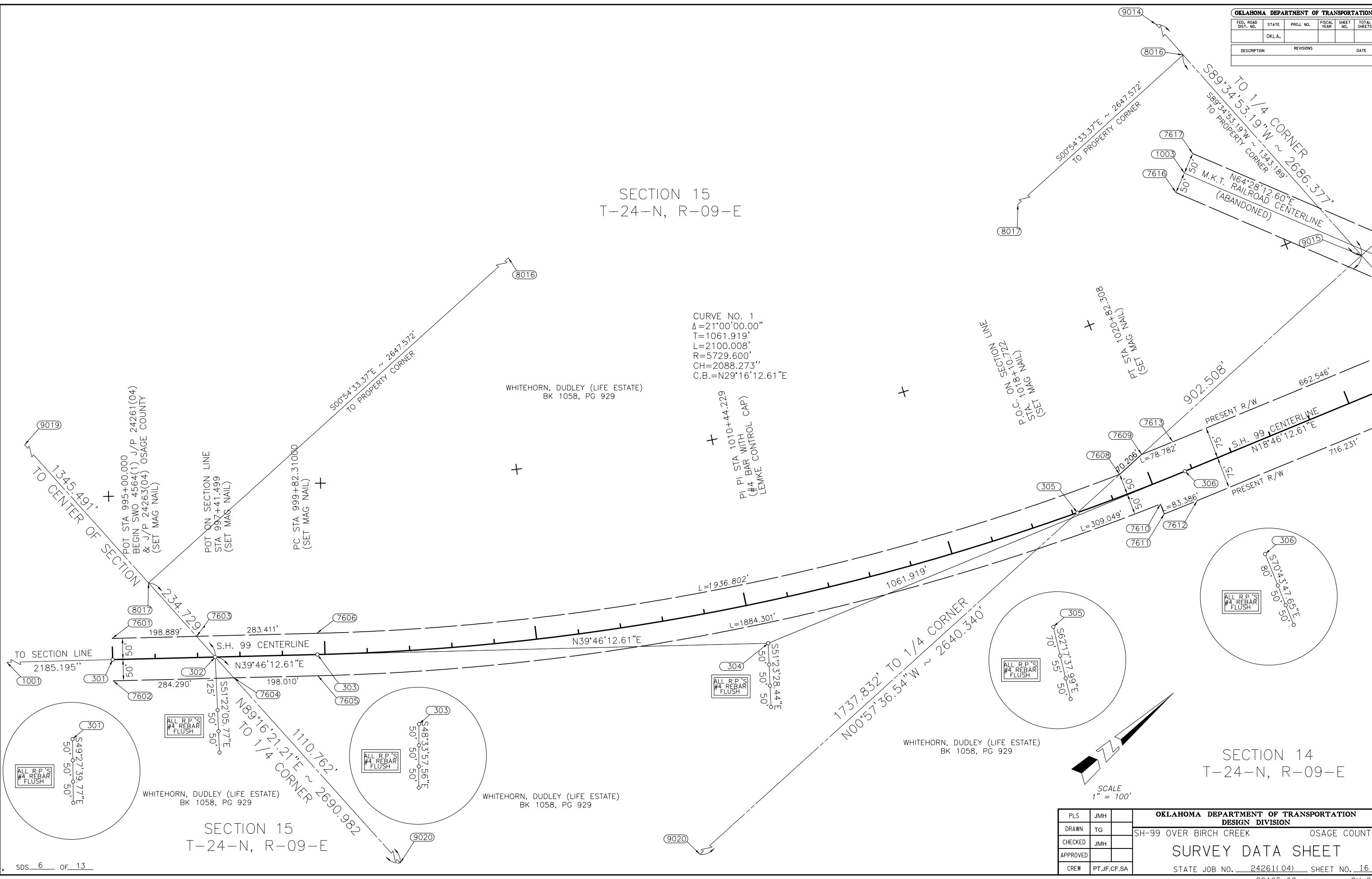


OKLAHOMA DEPARTMENT OF TRANSPORTATION					
FED. ROAD DIST. NO.	STATE	PROJ. NO.	FISCAL YEAR	SHEET NO.	TOTAL SHEETS
	OKLA.				
DESCRIPTION		REVISIONS		DATE	

SECTION 15  
T-24-N, R-09-E



CURVE NO. 1  
 $\Delta = 21^{\circ}00'00.00''$   
 $T = 1061.919'$   
 $L = 2100.008'$   
 $R = 5729.600'$   
 $CH = 2088.273''$   
 $C.B. = N29^{\circ}16'12.61''E$

WHITEHORN, DUDLEY (LIFE ESTATE)  
BK 1058, PG 929

PI PI STA 1010+44.229  
 (#4 BAR WITH CONTROL CAP)  
 LEMKE CONTROL CAP

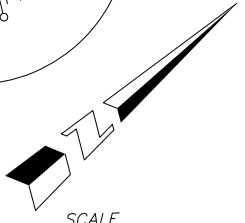
WHITEHORN, DUDLEY (LIFE ESTATE)  
BK 1058, PG 929

WHITEHORN, DUDLEY (LIFE ESTATE)  
BK 1058, PG 929

WHITEHORN, DUDLEY (LIFE ESTATE)  
BK 1058, PG 929

SECTION 15  
T-24-N, R-09-E

SECTION 14  
T-24-N, R-09-E



SCALE  
1" = 100'

PLS	JMH		OKLAHOMA DEPARTMENT OF TRANSPORTATION	
DRAWN	TG		DESIGN DIVISION	
CHECKED	JMH		SH-99 OVER BIRCH CREEK	OSAGE COUNTY
APPROVED			SURVEY DATA SHEET	
CREW	PT,JF,CF,SA		STATE JOB NO. 24261(04)	SHEET NO. 16

OSAGE CO. SH-99