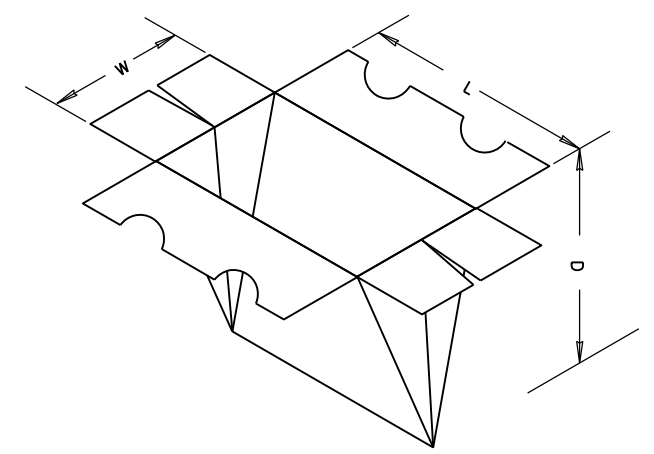
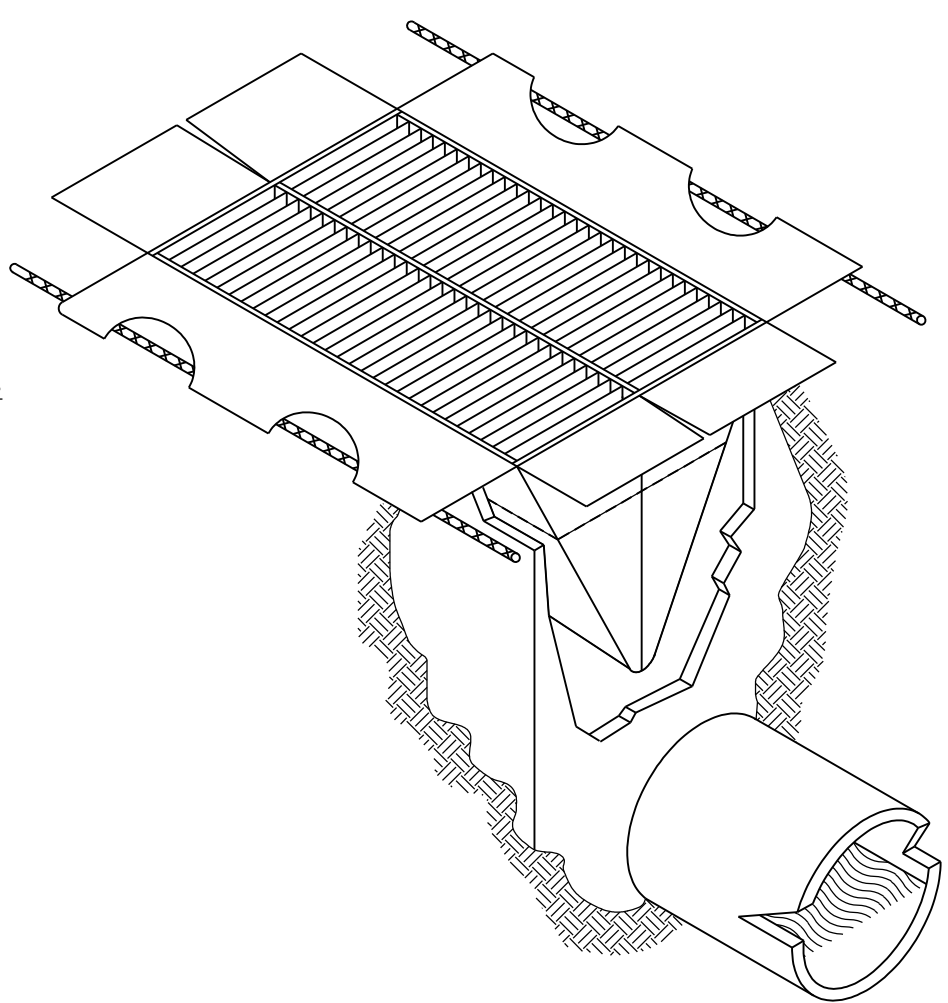


INSTALLATION DETAIL



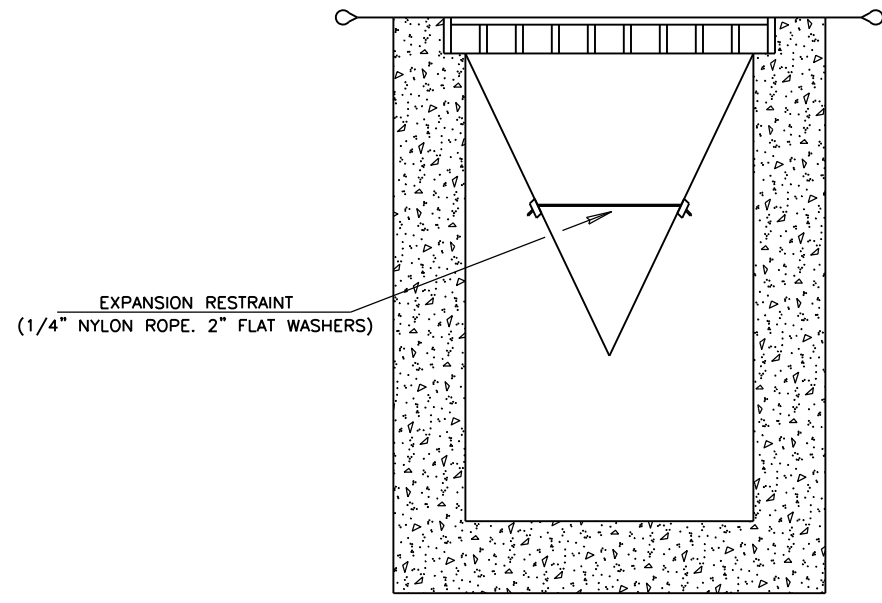
GENERAL NOTES

AN INLET SEDIMENT FILTER IS A WOVEN, POLYPROPYLENE SACK PLACED INTO UNDERGROUND DRAINS DESIGNED TO TRAP SEDIMENT BEFORE IT ENTERS THE DRAINAGE SYSTEM. THE FILTER HAS FLAP POCKETS ALONG THE TOP EDGES AND DUMP STRAPS ATTACHED TO THE BOTTOM THAT REMAIN ABOVE THE GROUND AND ARE HELD IN PLACE BY THE GRATE. THE FILTER MUST NEVER BE ALLOWED TO BE OVER HALF FULL OF SEDIMENT OR THE DRAINAGE SYSTEM COULD BE POLLUTED, NOT FUNCTION AT ALL OR MAKE IT VERY DIFFICULT TO REMOVE. CONSEQUENTLY, REGULAR MAINTENANCE IS MANDATORY.

WHEN IT IS DETERMINED THAT THE FILTER NEEDS TO BE CLEANED, TWO PIECES OF 1" REBAR ARE INSERTED THROUGH THE FLAP POCKETS. THE GRATE IS REMOVED AND THE LIFTING BARS ARE ATTACHED TO AVAILABLE EQUIPMENT AND THE SEDIMENT FILTER IS REMOVED TO A DUMPING AREA. ONCE THE INLET SEDIMENT FILTER IS ON THE GROUND, REMOVE THE LIFTING BARS FROM THE FLAP POCKETS AND INSERT THE LIFTING BARS THROUGH THE DUMP STRAPS. LIFT THE FILTER OFF THE GROUND BY THE DUMP STRAPS AND THE FILTER WILL TURN INSIDE OUT AND BE EMPTIED. IT MAY THEN BE RINSED AND REUSED OR DISPOSED OF AND REPLACED WITH A NEW INLET SEDIMENT FILTER.

THE GEOTEXTILE FABRIC SHALL BE WOVEN WITH THE FOLLOWING PROPERTIES:

PROPERTY	TEST METHOD	TEST RESULT
GRAB TENSILE	ASTM D-4632	300 lb (Min.)
GRAB ELONGATION	ASTM D-4632	20% (Max.)
PUNCTURE	ASTM D-4833	120 lb (Min.)
MULLEN BURST	ASTM D-3786	800 psi (Min.)
TRAPEZOID TEAR	ASTM D-4533	120 lb (Min.)
UV RESISTANCE	ASTM D-4355	70% @ 150hrs. (Min.)
APPARENT OPENING SIZE	ASTM D-4751	40 US SIEVE (Max.)
FLOW RATE	ASTM D-4491	40 Gal./min./sq.ft. (Max.)
PERMITTIVITY	ASTM D-4491	0.55 sec. ⁻¹ (Max.)



SIDE VIEW

BASIS OF PAYMENT		
ITEM NO.	ITEM	UNIT
221(H)	(PL) TEMPORARY INLET SEDIMENT FILTER	EACH

DESIGN	-	-
DRAWN	-	-
CHECKED	-	-
APPROVED	-	-
SQUAD	POE	

TEMPORARY INLET SEDIMENT FILTER

8/31/2017 2:32:46 PM H:\PROJECTS\203078_0001_EC-1611\Roadway\Drawings\203078_Temp.Sediment_Filter.dgn