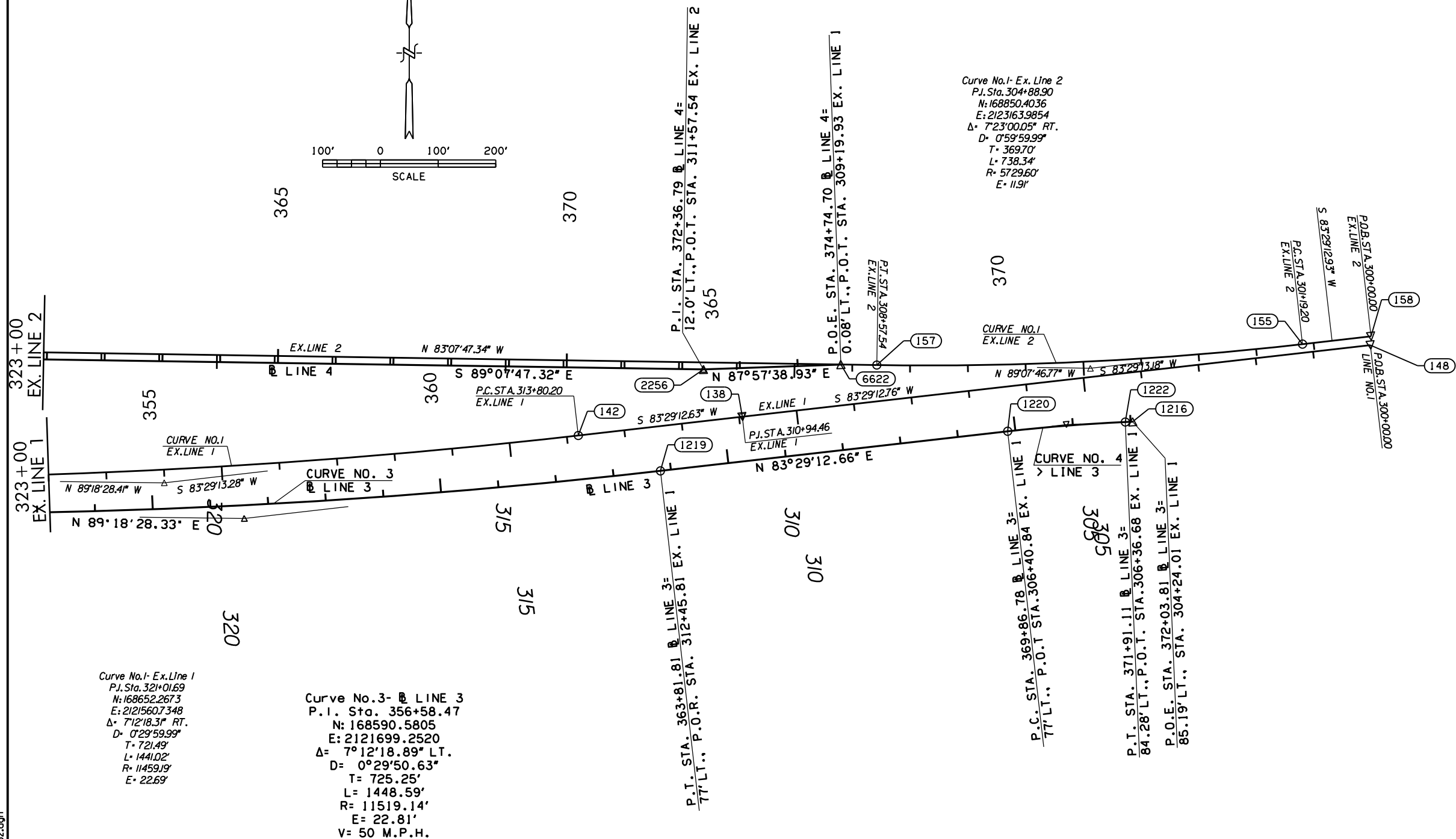
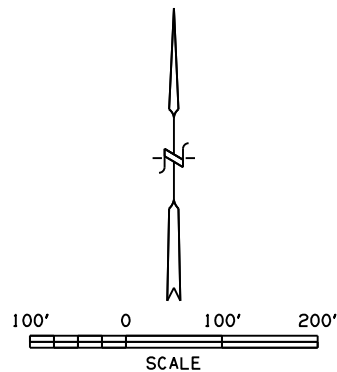


POE & ASSOCIATES, OKLAHOMA CITY, OK.					
FED. ROAD DIST. NO.	STATE	JOB PIECE NO.	FISCAL YEAR	SHEET NO.	TOTAL SHEETS
6	OKLA.				
DESCRIPTION		REVISIONS		DATE	

360



Curve No.1- Ex. Line 1
 P.I. Sta. 321+01.69
 N: 168652.2673
 E: 2121560.7348
 $\Delta = 712'18.31''$ RT.
 $D = 029'59.99''$
 $T = 721.49'$
 $L = 1441.02'$
 $R = 11459.19'$
 $E = 22.69'$

Curve No.3- Ex. Line 3
 P.I. Sta. 356+58.47
 N: 168590.5805
 E: 2121699.2520
 $\Delta = 712'18.89''$ LT.
 $D = 029'50.63''$
 $T = 725.25'$
 $L = 1448.59'$
 $R = 11519.14'$
 $E = 22.81'$
 $V = 50$ M.P.H.

Curve No.1- Ex. Line 2
 P.I. Sta. 304+88.90
 N: 168850.4036
 E: 2123163.9854
 $\Delta = 723'00.05''$ RT.
 $D = 059'59.99''$
 $T = 369.70'$
 $L = 738.34'$
 $R = 5729.60'$
 $E = 11.91'$

Curve No.4- Ex. Line 3
 P.I. Sta. 370+88.99
 N: 168753.0629
 E: 2123122.4381
 $\Delta = 405'12.05''$ RT.
 $D = 200'00.00''$
 $T = 102.21'$
 $L = 204.33'$
 $R = 2864.79'$
 $E = 1.82'$
 $V = 50$ M.P.H.

8/31/2017 2:32:38 PM H:\PROJECTS\203078_0001_EC-1611\Roadway\Drawings\203078_Geo2.dgn

DESIGN	-	-
DRAWN	-	-
CHECKED	-	-
APPROVED	-	-
SQUAD	POE	

GEOMETRIC LAYOUT
 SHEET 2 OF 4

STATE JOB NO. 30444(06) SHEET NO. 16
 OKLAHOMA COUNTY