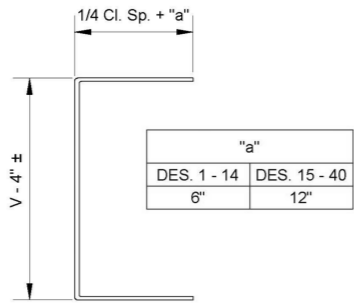
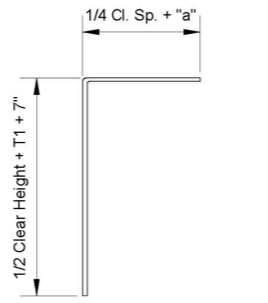


DETAIL OF CONSTRUCTION JOINT

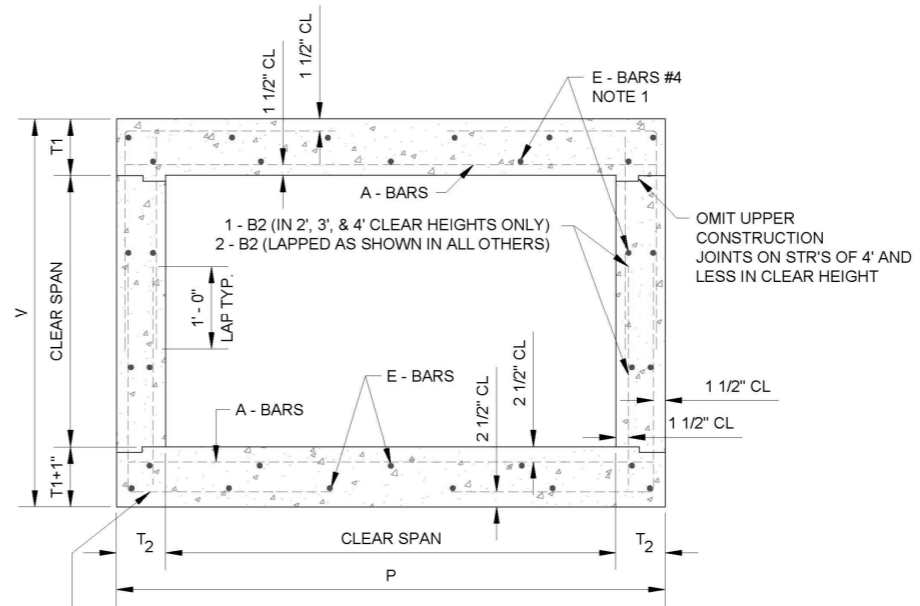


B - BAR
(SEE TABLE FOR TOTAL LENGTH)



B1 - BAR
(SEE TABLE FOR TOTAL LENGTH)

LIVE LOAD HS 20
Note:
R.C.B. DESIGN FOR FILL FROM 0' TO 8'.



1 - B BAR (IN 2', 3', & 4' CLEAR HEIGHTS ONLY)
2 - B1 BARS (IN ALL OTHERS)

TYPICAL BARREL SECTION

* 0' - 9" ± ADDED TO EACH BAR FOR LAP.
1 SPACING FOR BOTTOM OF TOP SLAB. ALL OTHERS @ 18" MAXIMUM

R.C.B. DESIGN FOR FILL FROM 0' TO 8'.

CLEAR SPAN	CLEAR HEIGHT	AREA SQ. FT.	DES. NO.	DIMENSIONS			REINFORCING										QUANTITIES FOR ONE PEDESTAL		QUANTITIES PER LINEAR FT. OF BARREL						
				T1	T2	V	P	A - BARS		B - BARS		B1 - BARS		B2 - BARS		E - BARS #4		STEEL - LB.	CONC. C.Y.	STEEL - LB.	CONC. C.Y.				
								SIZE	SPC.	LNQ.	SIZE	SPC.	LNQ.	SIZE	SPC.	LNQ.	SIZE					SPC.	LNQ.	NO	1
2'	2	4	1	6"	6"	3'-1"	3'-0"	#5	9"	2'-8"	#4	15"	4'-9"			#4	18"	2 @ 2'-9"	19	9 1/4"	30	.21	27.64	.194	
3'	2	6	2	6 1/4"	6"	3'-1 1/2"	4'-0"	#6	10 1/2"	3'-8"	#4	11 1/2"	5'-4"			#4	18"	2 @ 2'-10"	21	8"	30	.28	36.85	.241	
	2.5	7.5	3	6 1/4"	6"	3'-7 1/2"	4'-0"	#6	10"	3'-8"	#4	11 1/2"	5'-10"			#4	18"	2 @ 3'-4"	21	8"	30	.28	38.35	.259	
	3	9	4	6 1/4"	6"	4'-1 1/2"	4'-0"	#6	10"	3'-8"	#4	11 1/2"	6'-4"			#4	18"	2 @ 3'-10"	21	8"	30	.28	39.49	.278	
4'	2	8	5	7"	6"	3'-3"	5'-0"	#6	9"	4'-8"	#4	10 1/2"	5'-11"			#4	18"	2 @ 2'-11"	23	8 3/4"	40	.35	45.68	.305	
	2.5	10	6	7"	6"	3'-9"	5'-0"	#6	9"	4'-8"	#4	10 1/2"	6'-5"			#4	18"	2 @ 3'-5"	23	8 3/4"	40	.35	46.88	.324	
	3	12	7	7"	6"	4'-3"	5'-0"	#6	9"	4'-8"	#4	9 1/2"	6'-11"			#4	18"	2 @ 3'-11"	27	8 3/4"	40	.35	50.77	.342	
	4	16	8	7"	6"	5'-3"	5'-0"	#6	8 1/2"	4'-8"	#4	12"	7'-11"			#4	18"	2 @ 4'-11"	27	8 3/4"	40	.35	52.80	.379	
5'	2	10	9	7 1/2"	6"	3'-4"	6'-0"	#6	8"	5'-8"	#4	10 1/2"	6'-6"			#4	18"	2 @ 3'-0"	26	8"	50	.42	56.54	.370	
	3	15	10	7 1/2"	6"	4'-4"	6'-0"	#6	8"	5'-8"	#4	11"	7'-6"			#4	18"	2 @ 4'-0"	30	8"	50	.42	60.07	.407	
	4	20	11	7 1/2"	6"	5'-4"	6'-0"	#6	7 1/2"	5'-8"	#4	12"	8'-6"			#4	18"	2 @ 5'-0"	30	8"	50	.42	63.08	.444	
	5	25	12	7 1/2"	6"	6'-4"	6'-0"	#6	7"	5'-8"	#4			#4	12"	5'-6"	#4	18"	4 @ 3'-9"	34	8"	50	.42	73.26	.481
6'	3	18	13	8"	6"	4'-5"	7'-0"	#6	7"	6'-8"	#4	11"	8'-1"			#4	18"	2 @ 4'-1"	31	8 1/2"	60	.49	70.45	.478	
	4	24	14	8"	7"	5'-5"	7'-2"	#6	7"	6'-10"	#4	10 1/2"	9'-1"			#4	18"	2 @ 5'-1"	31	8 1/2"	60	.50	74.27	.548	
	5	30	15	8"	8"	6'-5"	7'-4"	#6	7 1/2"	7'-0"				#5	10 1/2"	6'-3"	#4	18"	4 @ 3'-10"	39	8 1/2"	60	.51	83.94	.631
	6	36	16	8"	8"	7'-5"	7'-0"	#6	7 1/2"	7'-0"				#5	10 1/2"	6'-9"	#4	18"	4 @ 4'-4"	39	8 1/2"	60	.51	86.22	.680
8'	3	24	17	9"	8"	4'-7"	9'-4"	#7	10"	9'-0"	#5	9 1/2"	10'-3"			#4	18"	2 @ 4'-3"	37	9"	80	.65	99.66	.694	
	4	32	18	9"	8"	5'-7"	9'-4"	#7	9 1/2"	9'-0"	#5	11"	11'-3"			#4	18"	2 @ 5'-3"	37	9"	80	.65	101.48	.744	
	5	40	19	9"	8"	6'-7"	9'-4"	#7	9"	9'-0"				#5	11"	6'-10"	#4	18"	4 @ 3'-11"	41	9"	80	.65	114.52	.793
	6	48	20	9"	9"	7'-7"	9'-6"	#7	9 1/2"	9'-2"				#5	10"	7'-4"	#4	18"	4 @ 4'-5"	41	9"	80	.66	119.32	.890
	7	56	21	9"	9"	8'-7"	9'-6"	#7	9 1/2"	9'-2"				#5	10"	7'-10"	#4	18"	4 @ 4'-11"	45	9"	80	.66	125.38	.945
10'	8	64	22	9"	9"	9'-7"	9'-6"	#7	9"	9'-2"				#5	10"	8'-4"	#4	18"	4 @ 5'-4"	49	9"	80	.66	133.91	1.001
	3	30	23	10"	8"	4'-9"	11'-4"	#7	9"	11'-0"	#5	8 1/2"	11'-5"			#4	18"	2 @ 4'-5"	47	8 3/4"	90	.79	128.89	.882	
	4	40	24	10"	8"	5'-9"	11'-4"	#7	8 1/2"	11'-0"	#5	9"	12'-5"			#4	18"	2 @ 5'-5"	47	8 3/4"	90	.79	134.25	.931	
	5	50	25	10"	8"	6'-9"	11'-4"	#7	8"	11'-0"				#5	10"	7'-5"	#4	18"	4 @ 4'-0"	51	8 3/4"	90	.79	145.78	.981
	6	60	26	10"	9"	7'-9"	11'-6"	#7	8 1/2"	11'-2"				#5	9"	7'-11"	#4	18"	4 @ 4'-6"	51	8 3/4"	90	.80	150.58	1.078
	7	70	27	10"	9"	8'-9"	11'-6"	#7	8 1/2"	11'-2"				#5	9 1/2"	8'-5"	#4	18"	4 @ 5'-0"	55	8 3/4"	90	.80	154.43	1.133
	8	80	28	10"	9"	9'-9"	11'-6"	#7	8"	11'-2"				#5	10"	8'-11"	#4	18"	4 @ 5'-6"	59	8 3/4"	90	.80	162.32	1.189
	9	90	29	10"	9"	10'-9"	11'-6"	#7	8"	11'-2"				#5	10"	9'-5"	#4	15"	4 @ 6'-0"	59	8 3/4"	90	.80	167.86	1.244
12'	10	100	30	10"	9"	11'-9"	11'-6"	#7	8"	11'-2"				#5	10"	9'-11"	#4	9 1/2"	4 @ 6'-6"	63	8 3/4"	90	.80	182.15	1.300
	12	120	31	10"	9"	13'-9"	11'-6"	#7	8"	11'-2"				#5	10"	10'-11"	#5	8 1/2"	4 @ 7'-6"	67	8 3/4"	90	.80	212.06	1.411
	5	60	32	11"	9"	6'-11"	13'-6"	#8	10 1/2"	13'-2"				#5	8 1/2"	8'-0"	#4	18"	4 @ 4'-1"	54	9 1/4"	110	.94	170.78	1.235
	6	72	33	11"	9"	7'-11"	13'-6"	#8	10 1/2"	13'-2"				#5	9"	8'-6"	#4	18"	4 @ 4'-7"	54	9 1/4"	110	.94	171.86	1.290
	7	84	34	11"	9"	8'-11"	13'-6"	#8	10"	13'-2"				#5	9 1/2"	9'-0"	#4	18"	4 @ 5'-1"	58	9 1/4"	110	.94	179.57	1.346
	8	96	35	11"	9"	9'-11"	13'-6"	#8	10"	13'-2"				#5	9 1/2"	9'-6"	#4	18"	4 @ 5'-7"	62	9 1/4"	110	.94	185.78	1.401
	9	108	36	11"	9"	10'-11"	13'-6"	#8	10"	13'-2"				#5	9 1/2"	10'-0"	#4	12"	4 @ 6'-1"	66	9 1/4"	110	.94	197.39	1.457
10	120	37	11"	10"	11'-11"	13'-8"	#8	10"	13'-4"				#5	9"	10'-6"	#4	12"	4 @ 6'-7"	66	9 1/4"	110	.94	205.54	1.586	
11	132	38	11"	10"	12'-11"	13'-8"	#8	10"	13'-4"				#5	9"	11'-0"	#4	11"	4 @ 7'-1"	70	9 1/4"	110	.95	214.05	1.648	
12	144	39	11"	10"	13'-11"	13'-8"	#8	10"	13'-4"				#5	8 1/2"	11'-6"	#5	11 1/2"	4 @ 7'-7"	70	9 1/4"	110	.95	232.96	1.709	
14	168	40	11"	11"	15'-11"	13'-10"	#8	10 1/2"	13'-6"				#6	10"	12'-6"	#5	8 1/2"	4 @ 8'-7"	78	9 1/4"	110	.96	275.12	1.931	

NOTES:

ALL CONSTRUCTION AND MATERIALS SHALL BE IN ACCORDANCE WITH THE OKLAHOMA CITY STANDARD SPECIFICATIONS.

REINFORCING STEEL IN BOTTOM SLAB (FOOTING) SHALL BE SUPPORTED ON BAR CHAIRS. CHAIRS SHALL BE SUPPORTED ON TIMBER PLANK OR CLASS "C" CONCRETE STRIPS PLACED AT 4" CENTERS.

REINFORCING STEEL IN TOP SLAB SHALL BE SUPPORTED ON SLAB SPACERS.

REINFORCING STEEL IN THE WALLS SHALL BE HELD IN PLACE BY METAL CHAIRS. MAXIMUM SPACING OF THE CHAIRS SHALL BE 6'.

COST OF METAL CHAIRS, WOOD PLANK OR CONCRETE STRIPS SHALL BE INCLUDED IN OTHER ITEMS OF WORK.

The City of
Oklahoma City
Public Works Department
Engineering Division



APPROVED BY: DATE: 05-02-13
ERIC J. WENGER, P.E.
CITY ENGINEER

DRAWN: VSC
DATE: 05-02-13

**STANDARD REINFORCED
CONCRETE BOX - ONE CELL**

Drawing Number
D-301

NORTH WESTERN AVE. OKLAHOMA CO.

DESIGN	KG
DRAWN	NDA
CHECKED	KA
APPROVED	
SQUAD	MacArthur

OKLAHOMA DEPARTMENT OF TRANSPORTATION

OKLAHOMA CITY STANDARD
D-103

STATE JOB NO. JP 30326(04) SHEET NO. 53