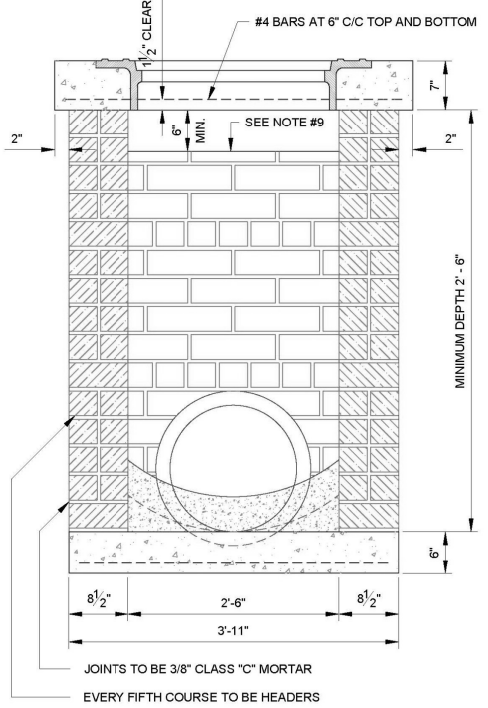
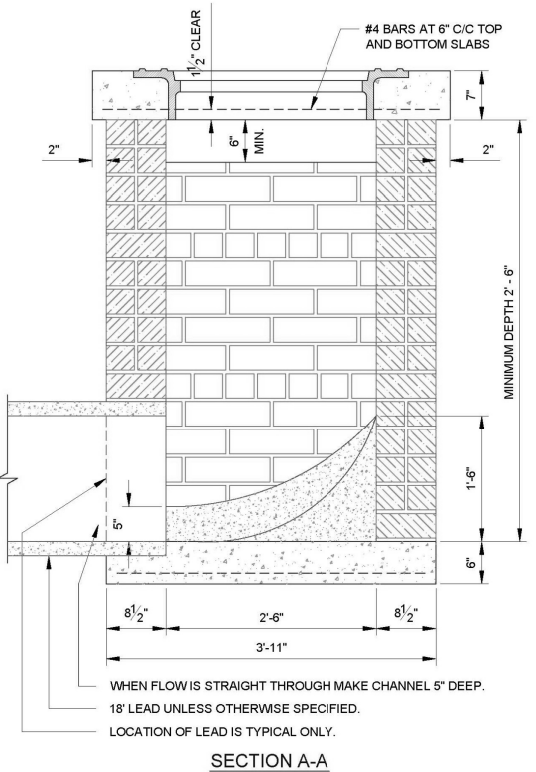
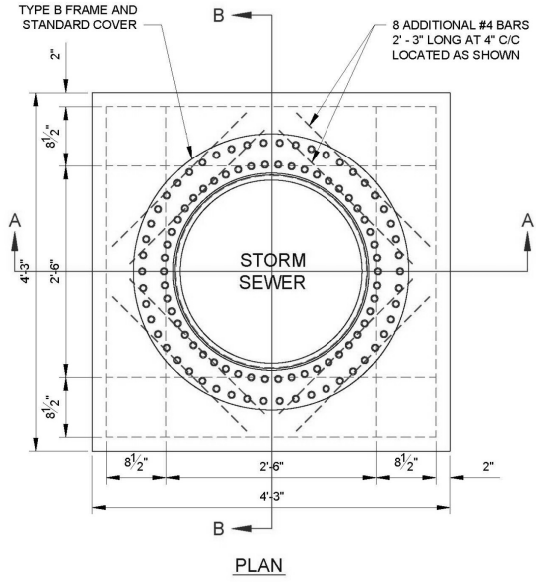


- GENERAL NOTES:
1. WHEN INLET IS BUILT IN NEW PAVEMENT, THE PAVEMENT SHALL BE MONOLITHIC WITH NEW PAVEMENT AND CONFORM TO PLANS AND SPECIFICATIONS THEREOF.
 2. WHEN INLET IS BUILT IN EXISTING PAVEMENT THE TYPES OF INLET PAVEMENT SHALL CONFORM TO THAT OF THE ADJACENT SLAB UNLESS OTHERWISE PROVIDED IN SPECIAL PROVISIONS.
 3. CAST IRON STEPS SHALL BE PLACED IN ALL INLETS 3' OR MORE IN DEPTH IN CONFORMITY WITH STANDARD SPECIFICATIONS.
 4. THE GRATING TO BE USED IN THIS STRUCTURE WILL BE SHOWN ON THE PLANS OR DESIGNATED IN SPECIAL PROVISIONS.
 5. THIS STRUCTURE WILL BE DESIGNED ON PLANS AS INLET NUMBER 5.
 6. BASIS OF PAYMENT FOR INLETS WILL BE FOR A LUMP SUM AS DETAILED OR UPON THE FOLLOWING ITEMS AS DESIGNATED IN THE PROPOSAL:
CUBIC FEET BRICK MASONRY
EACH TYPE "C" INLET FRAME & TYPE "A" GRATING
CUBIC YARDS TYPE "B" CONCRETE INLET BOTTOMS

STORM SEWER INLET
DESIGN # 5 - SINGLE GRATING



- GENERAL NOTES
1. THIS TYPE INLET IS STANDARD FOR UNPAVED STREETS AND UNDEVELOPED AREAS.
 2. TOP SLAB MAY BE CAST IN PLACE MORTAR OR PRE-CAST AND SET IN MORTAR.
 3. CONCRETE SHALL BE 3,500 LBS. PER SQUARE INCH.
 4. BASIS OF PAYMENT SHALL BE LUMP SUM OR AS DESIGNED IN THE PROPOSAL.
 5. REINFORCING STEEL IN TOP TO BE #4 BARS 4' - 0" LONG, IN BOTTOM TO BE 3' - 8" LONG, AT 6" ON CENTERS EACH WAY.
 6. OPENINGS MAY BE OMITTED ON 1, 2, OR 3 SIDES.
 7. OKLAHOMA CITY STANDARD TYPE B FRAME STANDARD COVER SHALL BE INSTALLED IN TOP SLAB.
 8. ALL DIMENSIONS SHOWN ARE MINIMUM DIMENSIONS AND MAY VARY ACCORDING TO THE PLANS.
 9. INLET WEIR ELEVATION TO BE CONSTRUCTED TO THE ELEVATION SHOWN IN THE PLANS OR BE A MINIMUM OF 1.0' BELOW EXISTING GROUND LINE.

BOX TYPE INLET

The City of
Oklahoma City
Public Works Department
Engineering Division



APPROVED BY: DATE: 01-31-13
ERIC J. WENGER, P.E.
CITY ENGINEER
DRAWN: VSC
DATE: 01-31-13

STANDARD INLET DETAILS
DESIGN # 5 (SINGLE GRATING)
AND BOX TYPE INLET

Drawing Number
D-103

DESIGN	KG
DRAWN	NDA
CHECKED	KA
APPROVED	
SQUAD	MacArthur

NORTH WESTERN AVE. OKLAHOMA CO.
OKLAHOMA DEPARTMENT OF TRANSPORTATION
OKLAHOMA CITY STANDARD
D-103
STATE JOB NO. JP 30326(04) SHEET NO. 52