

Thermal Traffic Detection Note:
Thermal vehicle detection will be provided for this intersection. The detector loops shown on the pavement are shown only to depict the areas of detection for the thermal detection units along with the phases that each thermal detector unit will call

REVISIONS		
NO.	DESCRIPTION	DATE

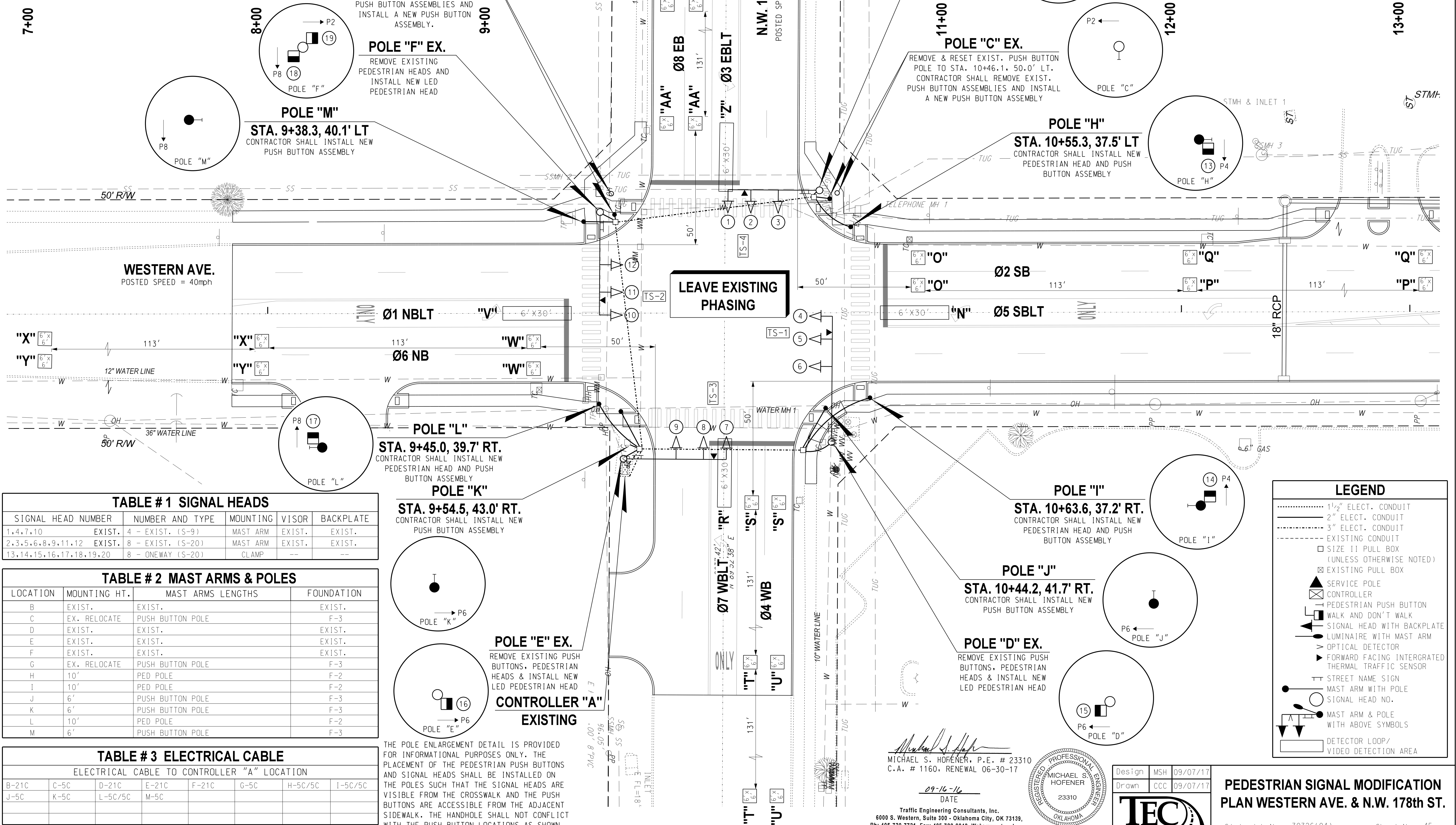
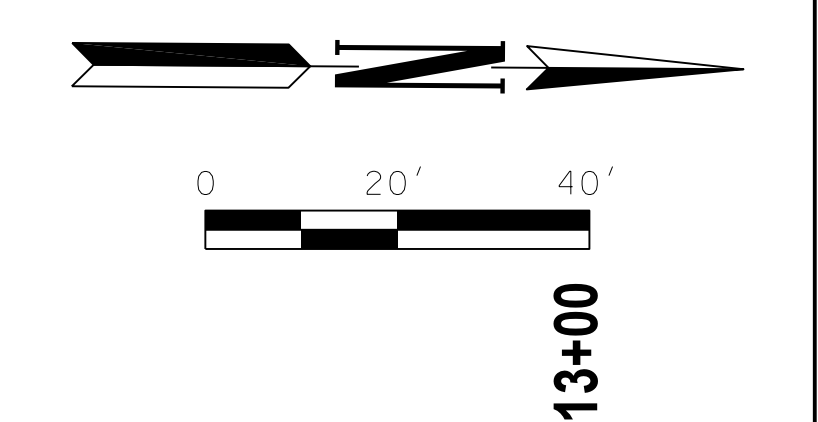


TABLE # 1 SIGNAL HEADS

SIGNAL HEAD NUMBER	NUMBER AND TYPE	MOUNTING	VISOR	BACKPLATE
1,4,7,10	EXIST. 4 - EXIST. (S-9)	MAST ARM	EXIST.	EXIST.
2,3,5,6,8,9,11,12	EXIST. 8 - EXIST. (S-20)	MAST ARM	EXIST.	EXIST.
13,14,15,16,17,18,19,20	8 - ONEWAY (S-20)	CLAMP	--	--

TABLE # 2 MAST ARMS & POLES

LOCATION	MOUNTING HT.	MAST ARMS LENGTHS	FOUNDATION
B	EXIST.	EXIST.	EXIST.
C	EX. RELOCATE	PUSH BUTTON POLE	F-3
D	EXIST.	EXIST.	EXIST.
E	EXIST.	EXIST.	EXIST.
F	EXIST.	EXIST.	EXIST.
G	EX. RELOCATE	PUSH BUTTON POLE	F-3
H	10'	PED POLE	F-2
I	10'	PED POLE	F-2
J	6'	PUSH BUTTON POLE	F-3
K	6'	PUSH BUTTON POLE	F-3
L	10'	PED POLE	F-2
M	6'	PUSH BUTTON POLE	F-3

TABLE # 3 ELECTRICAL CABLE

ELECTRICAL CABLE TO CONTROLLER "A" LOCATION

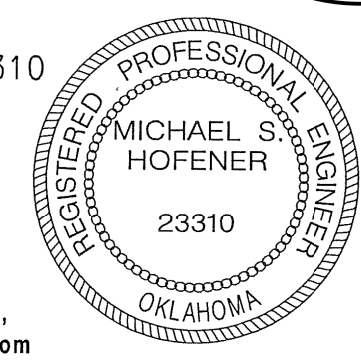
B-21C	C-5C	D-21C	E-21C	F-21C	G-5C	H-5C/5C	I-5C/5C
J-5C	K-5C	L-5C/5C	M-5C				

THE POLE ENLARGEMENT DETAIL IS PROVIDED FOR INFORMATIONAL PURPOSES ONLY. THE PLACEMENT OF THE PEDESTRIAN PUSH BUTTONS AND SIGNAL HEADS SHALL BE INSTALLED ON THE POLES SUCH THAT THE SIGNAL HEADS ARE VISIBLE FROM THE CROSSWALK AND THE PUSH BUTTONS ARE ACCESSIBLE FROM THE ADJACENT SIDEWALK. THE HANDHOLE SHALL NOT CONFLICT WITH THE PUSH BUTTON LOCATIONS AS SHOWN.

LEGEND

- 1/2" ELECT. CONDUIT
- 2" ELECT. CONDUIT
- 3" ELECT. CONDUIT
- EXISTING CONDUIT
- SIZE 11 PULL BOX (UNLESS OTHERWISE NOTED)
- EXISTING PULL BOX
- SERVICE POLE
- CONTROLLER
- PEDESTRIAN PUSH BUTTON
- WALK AND DON'T WALK
- SIGNAL HEAD WITH BACKPLATE
- LUMINAIRE WITH MAST ARM
- OPTICAL DETECTOR
- FORWARD FACING INTEGRATED THERMAL TRAFFIC SENSOR
- STREET NAME SIGN
- MAST ARM WITH POLE SIGNAL HEAD NO.
- MAST ARM & POLE WITH ABOVE SYMBOLS
- DETECTOR LOOP/VIDEO DETECTION AREA

Michael S. Hofener, P.E. # 23310
C.A. # 1160, RENEWAL 06-30-17



Design	MSH	09/07/17
Drawn	CCC	09/07/17

PEDESTRIAN SIGNAL MODIFICATION PLAN WESTERN AVE. & N.W. 178th ST.

State Job No. 30326(04) Sheet No. 45



Traffic Engineering Consultants, Inc.
6000 S. Western, Suite 300 - Oklahoma City, OK 73139,
Ph: 405-720-7721, Fax: 405-720-9848, Web: www.tecok.com

09/07/17 G:\09\Projects\172202_NW_178th St. & Western Ave Ped Imp\CAD\178th_Sig_REV1.dgn