

- CONTRACTOR SHALL KEEP 11' MINIMUM LANE WIDTHS UNLESS OTHERWISE NOTED.
- CONTRACTOR SHALL MAINTAIN ACCESS TO ALL BUSINESSES, STREETS AND DRIVEWAYS.
- REMOVE ALL CONFLICTING STRIPING

N. WESTERN AVENUE

8+00

10+00

99+00

101+00

MATCH LINE - STA. 12+00

SEE ADVANCE WARNING SIGN SHEET
N. WESTERN AVE.
250' TAPER - 10 DRUMS AT 25' C/C
N. WESTERN AVE.

WORK AREA 110 CHANNELIZER CONES AT 50' C/C

DOUBLE YELLOW FLEX-TABS AT 5' C/C

TRAFFIC DURING PHASE 3 CONST.

DOUBLE YELLOW FLEX-TABS AT 5' C/C

INSTALL 24" WHITE STOP LINE (PAINT)

(2) TYPE III BARRICADES WITH R11-2 (PHASE 3B) (LANE)

(2) TYPE III BARRICADES WITH R11-2 (PHASE 3B) (LANE)

(2) TYPE III BARRICADES WITH R11-2 (PHASE 3A) (LANE)

PHASE 3A CONSTRUCT SE CORNER OF INTERSECTION

(2) TYPE III BARRICADES WITH R11-2 (PHASE 3A) (LANE)

PHASE 3B CONSTRUCT PERMANENT EASTBOUND NW 178TH

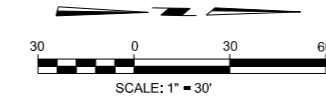
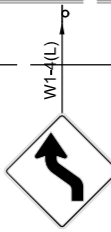
TRAFFIC DURING PHASE 3A CONST.

PHASE 3A CONSTRUCT NE CORNER OF INTERSECTION

(2) TYPE III BARRICADES WITH R11-2 (PHASE 3A) (LANE)

TRAFFIC DURING PHASE 3B CONST.

TYPE III BARRICADE WITH R11-2 (LANE) (PHASE 3A & 3B TYPICAL)



- PREVIOUSLY CONSTRUCTED TEMP. ASPHALT PAVEMENT
- PROP. CONC PAVEMENT
- PORTABLE MEDIAN BARRIER

20+00

MATCH LINE - STA. 12+00

MATCH LINE - STA. 21+00

15+00

HIGHLAND PARK RD.

WORK AREA 110 CHANNELIZER CONES AT 50' C/C

W20-1 (AHEAD) TO REMAIN IN PLACE THROUGH ALL PHASES OF CONSTRUCTION



TRAFFIC DURING PHASE 3 CONST.

DOUBLE YELLOW FLEX-TABS AT 5' C/C

PHASE 3 CONSTRUCT PERMANENT NORTH BOUND LANES TYPICAL PAVEMENT

N. WESTERN AVENUE

CONSTRUCT 5' SIDEWALK

W20-1 (AHEAD) TO REMAIN IN PLACE THROUGH ALL PHASES OF CONSTRUCTION



PASADOS DR.

NORTH WESTERN AVE.

OKLAHOMA CO.

DESIGN	KG
DRAWN	NDA
CHECKED	KA
APPROVED	
SQUAD	MacArthur

OKLAHOMA DEPARTMENT OF TRANSPORTATION

SEQUENCE OF CONSTRUCTION (8)
PHASE III

STATE JOB NO. JP 30326(04) SHEET NO. 40