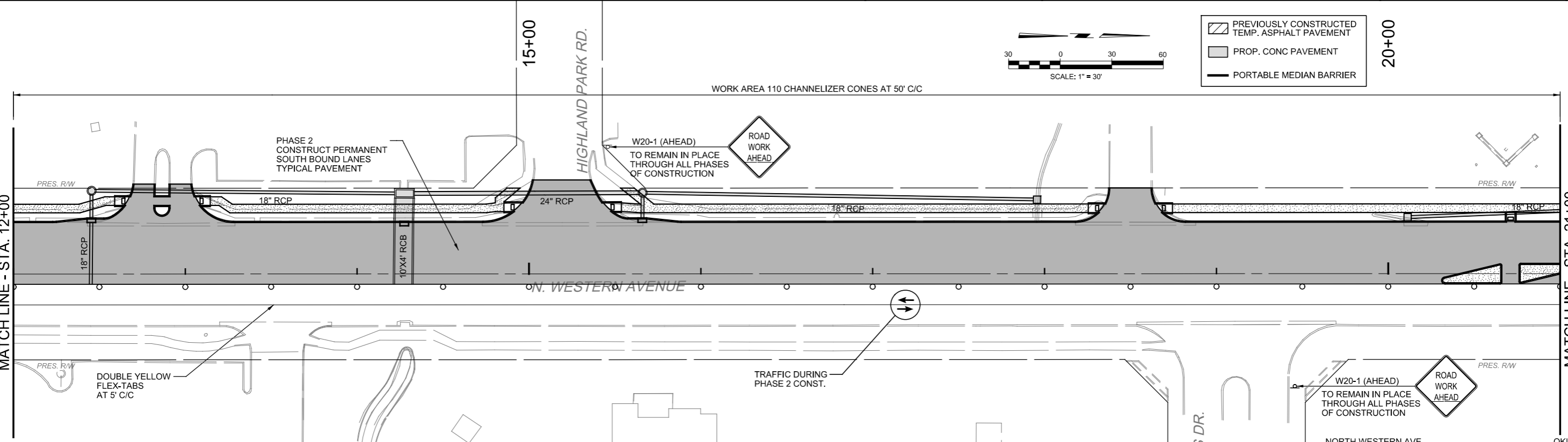
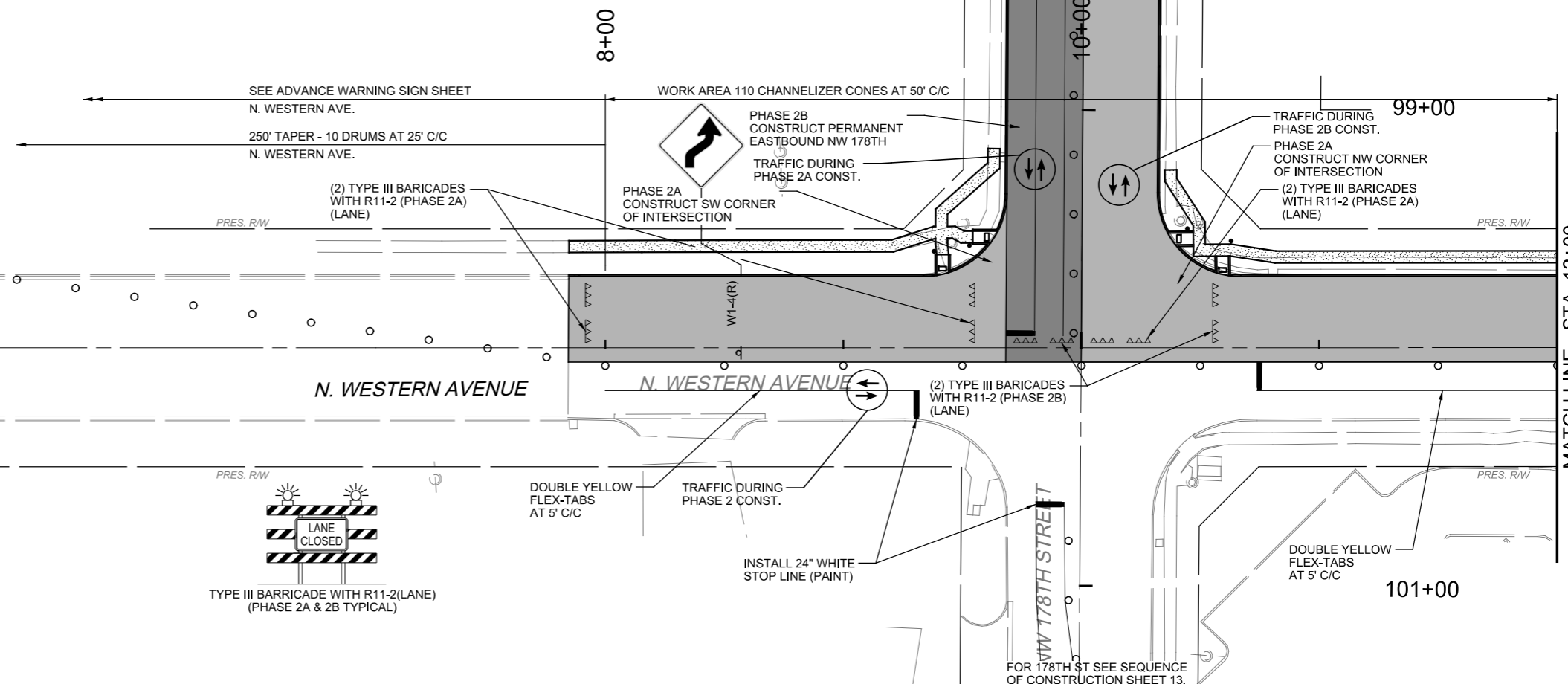


1. CONTRACTOR SHALL KEEP 11' MINIMUM LANE WIDTHS UNLESS OTHERWISE NOTED.
2. CONTRACTOR SHALL MAINTAIN ACCESS TO ALL BUSINESSES, STREETS AND DRIVEWAYS.
3. REMOVE ALL CONFLICTING STRIPING



LEGEND

- PREVIOUSLY CONSTRUCTED TEMP. ASPHALT PAVEMENT
- PROP. CONC PAVEMENT
- PORTABLE MEDIAN BARRIER

SCALE: 1" = 30'

DESIGN	KG
DRAWN	NDA
CHECKED	KA
APPROVED	
SQUAD	MacArthur

NORTH WESTERN AVE. OKLAHOMA CO.

OKLAHOMA DEPARTMENT OF TRANSPORTATION

SEQUENCE OF CONSTRUCTION (4)
PHASE II

STATE JOB NO. JP 30326(04) SHEET NO. 36

PRINT DATE: 12/19/2016 T:\1209\Drawings\Traffic\1209-S-Seq04.dgn