

WORK AREA 40 CHANNELIZER CONES AT 50' C/C

MATCH LINE - STA. 57+00

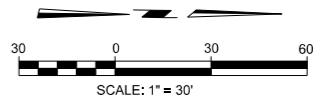
TRAFFIC DURING PHASE 1 CONST.

PHASE 1 CONSTRUCT TEMPORARY ASPHALT PAVEMENT

N. WESTERN AVENUE

SECTION LINE
NW 192ND STREET

SECTION LINE
S 89°27'31" W
2623.60'



- TEMP. ASPHALT PAVEMENT
- PROP. CONC PAVEMENT
- PORTABLE MEDIAN BARRIER

PRINT DATE: 12/19/2016 T:\1209\Drawings\Traffic\1209-S-Seq03.dgn

DESIGN	KG
DRAWN	NDA
CHECKED	KA
APPROVED	
SQUAD	MacArthur

NORTH WESTERN AVE. OKLAHOMA CO.

OKLAHOMA DEPARTMENT OF TRANSPORTATION

**SEQUENCE OF CONSTRUCTION (3)
PHASE I**

STATE JOB NO. JP 30326(04) SHEET NO. 35