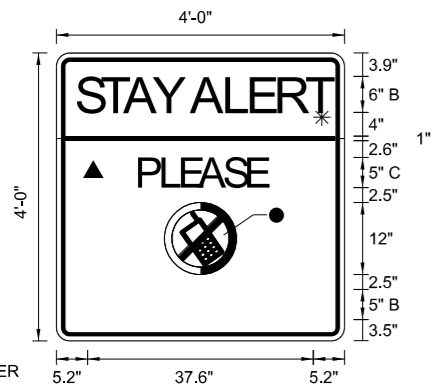
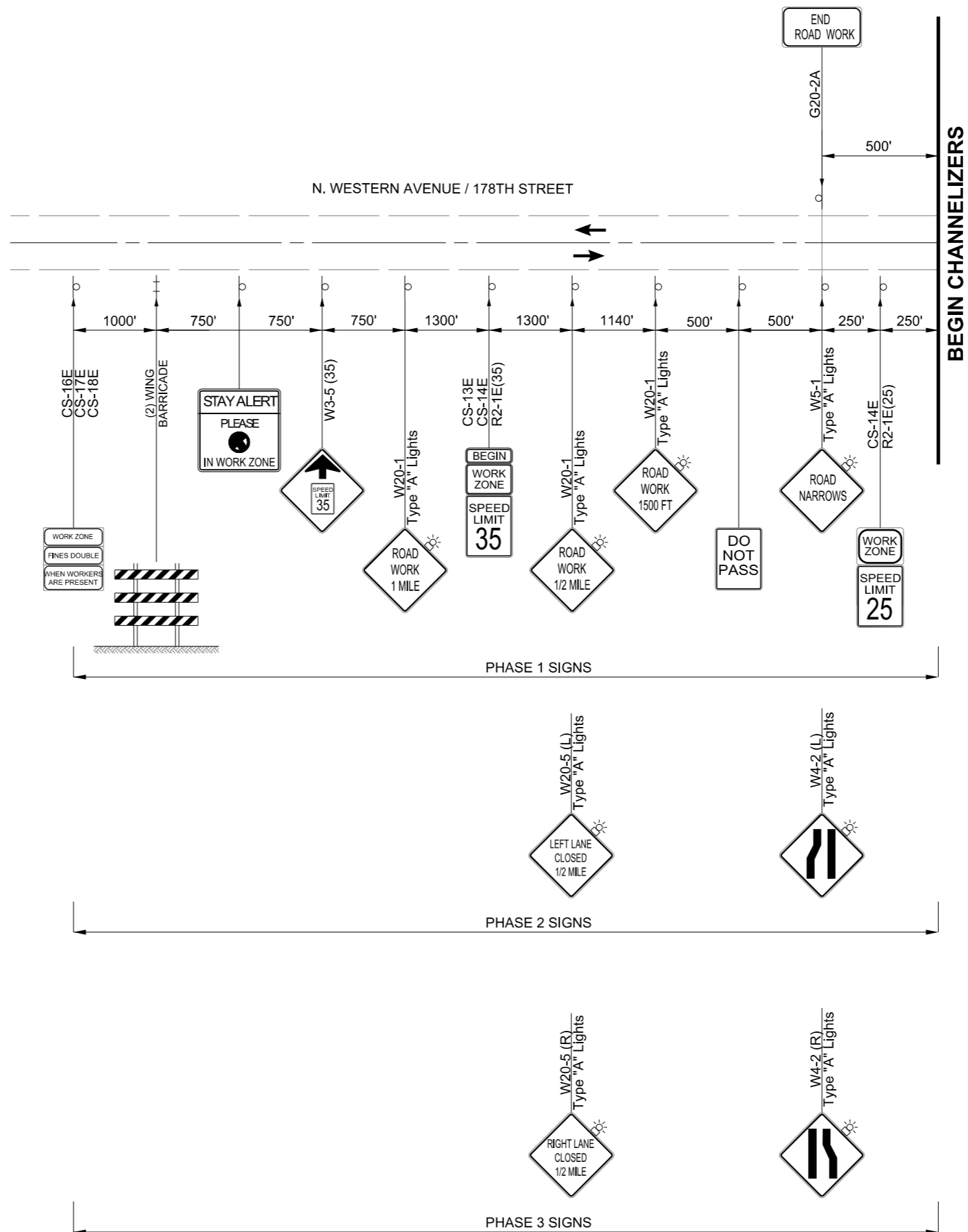


PRINT DATE: 12/19/2016 T:\1209\Drawings\Traffic\1209-S-Seq01.dgn



BORDER
R=1.5"
TH=0.75"
IN=0.75"

COLOR:
LEGEND, SYMBOL AND BORDER:
BLACK (NON-REFLECTORIZED)
BACKGROUND:
FLUORESCENT ORANGE (REFLECTORIZED)
FLUORESCENT YELLOW (REFLECTORIZED)
WHITE (REFLECTORIZED)

FONT:
(1) ClearviewHwy-2-B
(2) ClearviewHwy-1-B

Panel Style: cell org.ssi
M.U.T.C.D.: 2009 Edition

NO CELL PHONE WORKING ZONE DETAIL
N.T.S.

DESIGN		KG		NORTH WESTERN AVE.		OKLAHOMA CO.
DRAWN		NDA		OKLAHOMA DEPARTMENT OF TRANSPORTATION		
CHECKED		KA		SEQUENCE OF CONSTRUCTION (1) ADVANCE WARNING SIGNS		
APPROVED				STATE JOB NO. JP 30326(04) SHEET NO. 33		
SQUAD		MacArthur				