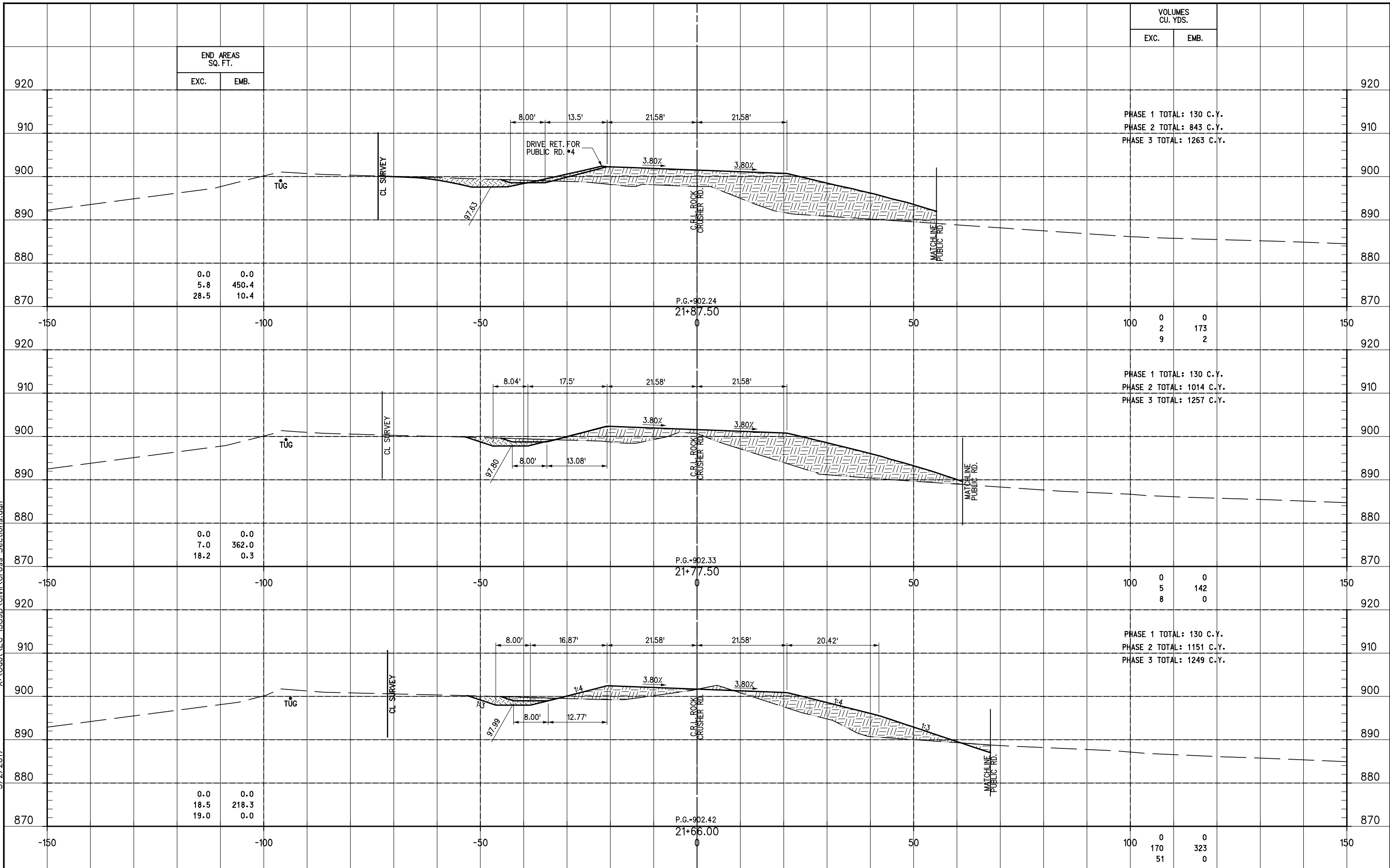


X:\odot\EC-1589B\Civil\Cross Sections.dgn
3/2/2017



| VOLUMES CU. YDS. | |
|---------------------|------|
| EXC. | EMB. |
| 0 | 0 |
| 2 | 173 |
| 9 | 2 |

PHASE 1 TOTAL: 130 C.Y.
PHASE 2 TOTAL: 843 C.Y.
PHASE 3 TOTAL: 1263 C.Y.

| | |
|---|-----|
| 0 | 0 |
| 5 | 142 |
| 8 | 0 |

PHASE 1 TOTAL: 130 C.Y.
PHASE 2 TOTAL: 1014 C.Y.
PHASE 3 TOTAL: 1257 C.Y.

| | |
|-----|-----|
| 0 | 0 |
| 170 | 323 |
| 51 | 0 |

PHASE 1 TOTAL: 130 C.Y.
PHASE 2 TOTAL: 1151 C.Y.
PHASE 3 TOTAL: 1249 C.Y.

STA. 21+66.00 TO STA. 21+87.50

SCALE: 1"=10' VERT. & HORIZ.