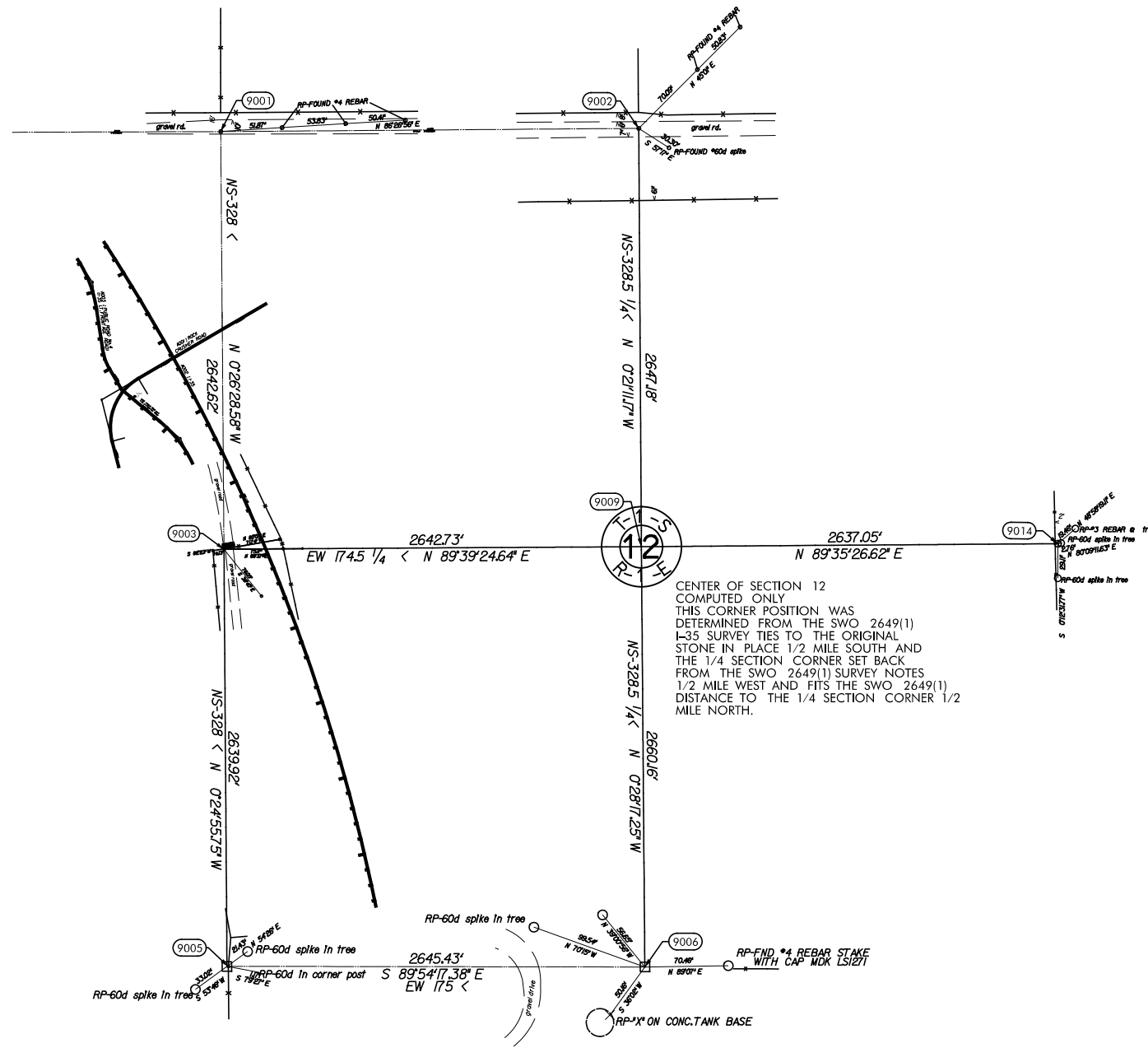


1/4 SECTION CORNER - FOUND #4 REBAR STAKE WITH PLASTIC CAP MD KING, LS 1271 AS PER CORNER RECORD FILED 9/11/96. THIS CORNER LOCATION WAS ALSO FILED BY ES KING, LS 1542, 9/9/02. THIS CORNER LOCATION IS ON LINE AND 1/2 THE DISTANCE BETWEEN THE SECTION CORNERS AND IN LINE WITH THE FENCE TO THE NORTH. USED #4 REBAR STAKE WITH CAP AS FOUND IN PLACE.

SECTION CORNER - ODOT M-50-317 - FOUND #4 REBAR STAKE WITH CAP MD KING, LS 1271 AS PER CORNER RECORD DATED 9/11/96. THIS CORNER LOCATION AND MONUMENT WAS ALSO FILED BY S KING, LS 1542 ON 9/9/02. THIS CORNER LOCATION FITS MY SECTION CORNER FOUND IN PLACE 1 MILE WEST THAT WAS SET BACK FROM AN ORIGINAL BEARING TREE AND THE FENCE LINES 0.5 MILES EAST AND WEST AS WELL AS THE OLD SECTION LINE FENCE AT THIS CORNER LOCATION. I ALSO FOUND A 1" IRON PIN AS PER CORNER RECORD BY GARLAND LS 330 ODOT DATED 12/30/85 N89°53'W, 5.94'. USED THE #4 REBAR STAKE WITH CAP AS FOUND IN PLACE.

1/4 SECTION CORNER - FOUND #4 REBAR STAKE WITH CAP M.D. KING LS 1271 AT THE SOUTHWEST CORNER OF THE CATTLEGUARD AS PER CORNER RECORD BY KING LS 1271 DATED 5/27/11. THIS CORNER LOCATION WAS RE-ESTABLISHED FROM S.W.O. 2649(1) AND FAP No. 1-35-2(68)052 PLANS. USED THE #4 REBAR STAKE W/CAP AS FOUND IN PLACE.

SECTION CORNER - FOUND ORIGINAL STONE IN PLACE AS PER CORNER RECORD BY MD KING, LS 1271, 9/11/96. USED ORIGINAL STONE AS FOUND IN PLACE.



1/4 SECTION CORNER - FOUND A #3 REBAR STAKE WITH PLASTIC CAP. USED #3 REBAR STAKE WITH CAP AS FOUND IN PLACE.

CENTER OF SECTION 12 COMPUTED ONLY. THIS CORNER POSITION WAS DETERMINED FROM THE SWO 2649(1) I-35 SURVEY TIES TO THE ORIGINAL STONE IN PLACE 1/2 MILE SOUTH AND THE 1/4 SECTION CORNER SET BACK FROM THE SWO 2649(1) SURVEY NOTES 1/2 MILE WEST AND FITS THE SWO 2649(1) DISTANCE TO THE 1/4 SECTION CORNER 1/2 MILE NORTH.

1/4 SECTION CORNER - FOUND THE ORIGINAL STONE IN PLACE AS SHOWN ON THE CORNER RECORD BY MD KING, LS 1271, 8/25/95. USED THE ORIGINAL STONE AS FOUND IN PLACE.

NOTE: REFERENCE'S SHOWN ARE NOT TO SCALE.