

WHITE HAWK ENGINEERING AND DESIGN						
FED. ROAD DIST. NO.	STATE	PROJ. NO.	FISCAL YEAR	SHEET NO.	TOTAL SHEETS	
	OKLA.					
DESCRIPTION			REVISIONS		DATE	

1/4 SECTION CORNER - FOUND #4 REBAR STAKE W/CAP LS1271 AS SHOWN ON CORNER RECORD DATED 2/14/97 M.D. KING. ALSO FOUND #4 REBAR STAKE AS SHOWN ON CORNER RECORD BY GARLAND LS330 OKLAHOMA DEPT. OF TRANSPORTATION N2°26'32"W 2.69 FEET. MY CORNER LOCATION AS MONUMENTED IS ON LINE AND 1/2 THE DISTANCE BETWEEN THE SECTION CORNER 0.5 MILES WEST (RE-ESTABLISHED FROM THE ORIGINAL BEARING TREE) AND THE SECTION CORNER 0.5 MILES EAST AS ESTABLISHED AND RECORDED BY ME. USED #4 REBAR WITH LS1271 CAP AS FOUND IN PLACE.

SECTION CORNER - FOUND #4 REBAR WITH CAP LS1271 AS SHOWN ON CORNER RECORD DATED 2/14/97 THIS CORNER POSITION WAS DETERMINED FROM AN ORIGINAL BEARING TREE FOUND IN PLACE AT THAT TIME. OKLAHOMA HIGHWAY DEPT. SURVEY RECORDS INDICATED THAT THEY FOUND A RAILROAD SPIKE IN PLACE AT THIS LOCATION WHEN THEY MADE THEIR SURVEY ON S.H. 7 AND ALSO FOUND A 1/2" IRON PIN NEARBY WHICH THEY USED. THEY CHOSE NOT TO USE THE RAILROAD SPIKE AND DID NOT NOTE THE BEARING TREE IN THEIR SURVEY NOTES. BASED ON THEIR SURVEY NOTES, THE RAILROAD SPIKE WOULD HAVE FIT THE BEARING TREE AND MY CORNER POSITION VERY CLOSELY. USED #4 REBAR STAKE WITH LS1271 CAP AS FOUND IN PLACE.

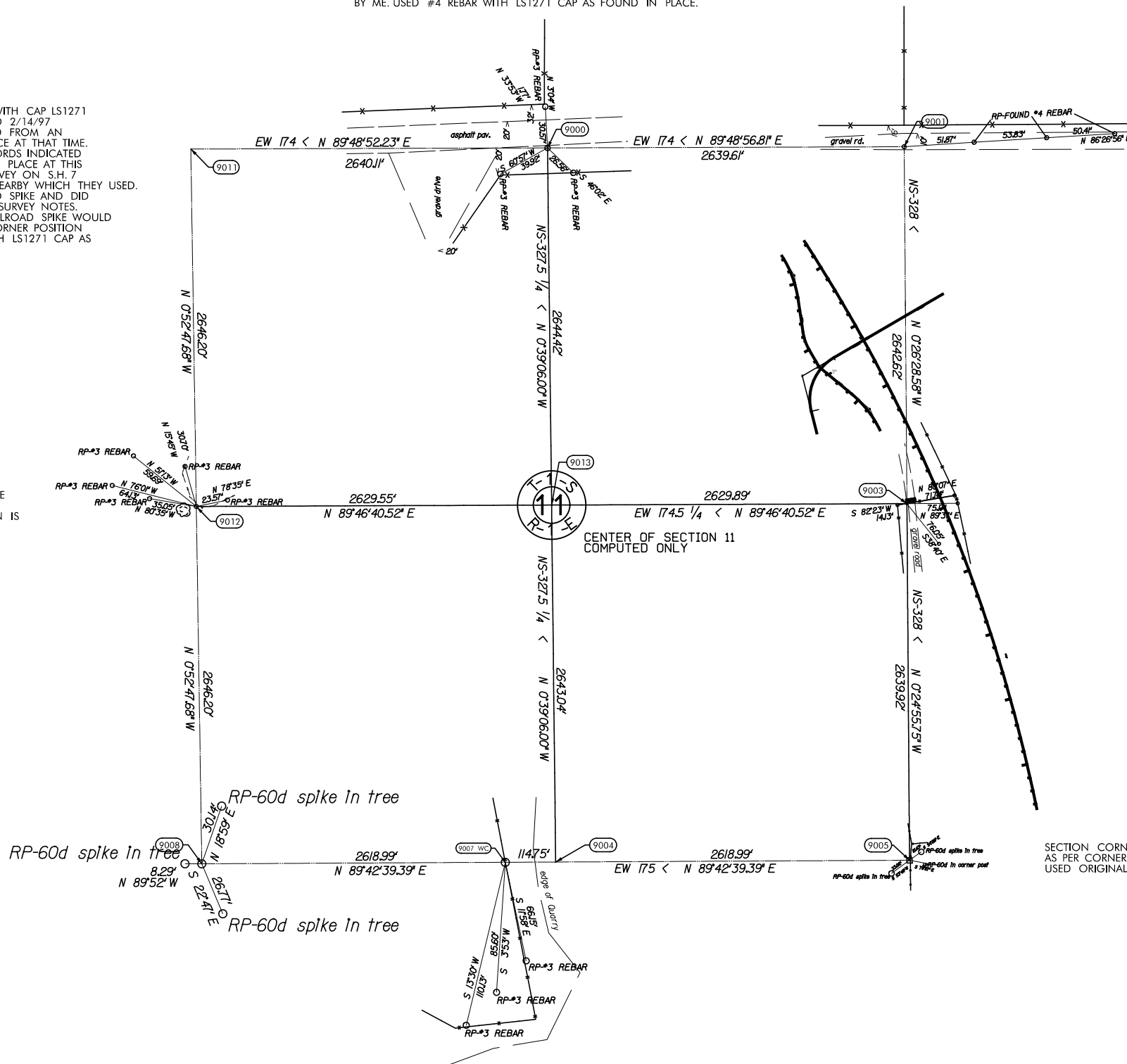
SECTION CORNER - ODOT M-50-317 - FOUND #4 REBAR STAKE WITH CAP MD KING, LS 1271 AS PER CORNER RECORD DATED 9/11/96. THIS CORNER LOCATION AND MONUMENT WAS ALSO FILED BY S. KING, LS 1542 ON 9/9/02. THIS CORNER LOCATION FITS MY SECTION CORNER FOUND IN PLACE 1 MILE WEST THAT WAS SET BACK FROM AN ORIGINAL BEARING TREE, AND THE FENCE LINES 0.5 MILES EAST AND WEST AS WELL AS THE OLD SECTION LINE FENCE AT THIS CORNER LOCATION. I ALSO FOUND A 1" IRON PIN AS PER CORNER RECORD BY GARLAND LS 330 ODOT DATED 12/30/85 N89°53'W, 5.94'. USED THE #4 REBAR STAKE WITH CAP AS FOUND IN PLACE.

1/4 SECTION CORNER - FOUND #3 REBAR STAKE WITH CAP McCLINTICK LS 1367 AS PER CORNER RECORD DATED 5/30/06. HIS CORNER LOCATION IS N80°35'W, 35.05' OF MY CORNER LOCATION WHICH IS ON LINE AND HALF THE DISTANCE BETWEEN THE ORIGINAL STONE 0.5 MI. S. AND MY SECTION CORNER 0.5 MI. N. SET A #4 REBAR STAKE WITH CAP AT MY CORNER LOCATION.

1/4 SECTION CORNER - FOUND #4 REBAR STAKE WITH CAP M.D. KING LS 1271 AT THE SOUTHWEST CORNER OF THE CATTLEGUARD AS PER CORNER RECORD BY KING LS 1271 DATED 5/27/11. THIS CORNER LOCATION WAS RE-ESTABLISHED FROM S.W.O. 2649(1) AND FAP No. I-35-2(68)052 PLANS. USED THE #4 REBAR STAKE W/CAP AS FOUND IN PLACE.

SECTION CORNER - FOUND ORIGINAL STONE IN PLACE. AS PER CORNER RECORD BY MD KING, LS 1271 DATED 2/14/97. USED ORIGINAL STONE AS FOUND IN PLACE.

SECTION CORNER - FOUND ORIGINAL STONE IN PLACE AS PER CORNER RECORD BY MD KING, LS 1271, 9/11/96. USED ORIGINAL STONE AS FOUND IN PLACE.



1/4 SECTION CORNER - SET A COTTON SPINDLE WITH A WASHER LS1271 FOUND 2 RAILROAD SPIKES AND A #3 REBAR STAKE IN THIS AREA. RR SPIKE N89°43'48"E 3.59 FT. MORRIS LS1477 11-08-06 RR SPIKE S59°41'52"E 4.24 FT. NO RECORD #3 REBAR STAKE S84°42'03"E 13.31 FT. NO RECORD NONE OF THE MONUMENTS FOUND FIT THE CORNER POSITION COMPUTED FROM TIES TO REFERENCE POINTS FOUND IN PLACE ON I-35.

NOTE: REFERENCE'S SHOWN ARE NOT TO SCALE.

OKLAHOMA DEPARTMENT OF TRANSPORTATION SURVEY DIVISION			
SURVEY DATA SHEET			
PLS	MDK		
DRAWN	MDK		
CHECKED	TRK		
APPROVED	MDK		
CREW	MS		
SWO 5028		PROJECT NO. 30363(04) SHEET NO. S-16	