

OKLAHOMA DEPARTMENT OF TRANSPORTATION					
FED. ROAD DIST. NO.	STATE	PROJ. NO.	FISCAL YEAR	SHEET NO.	TOTAL SHEETS
	OKLA.				
DESCRIPTION			REVISIONS	DATE	

STATE OF OKLAHOMA
DEPARTMENT OF TRANSPORTATION

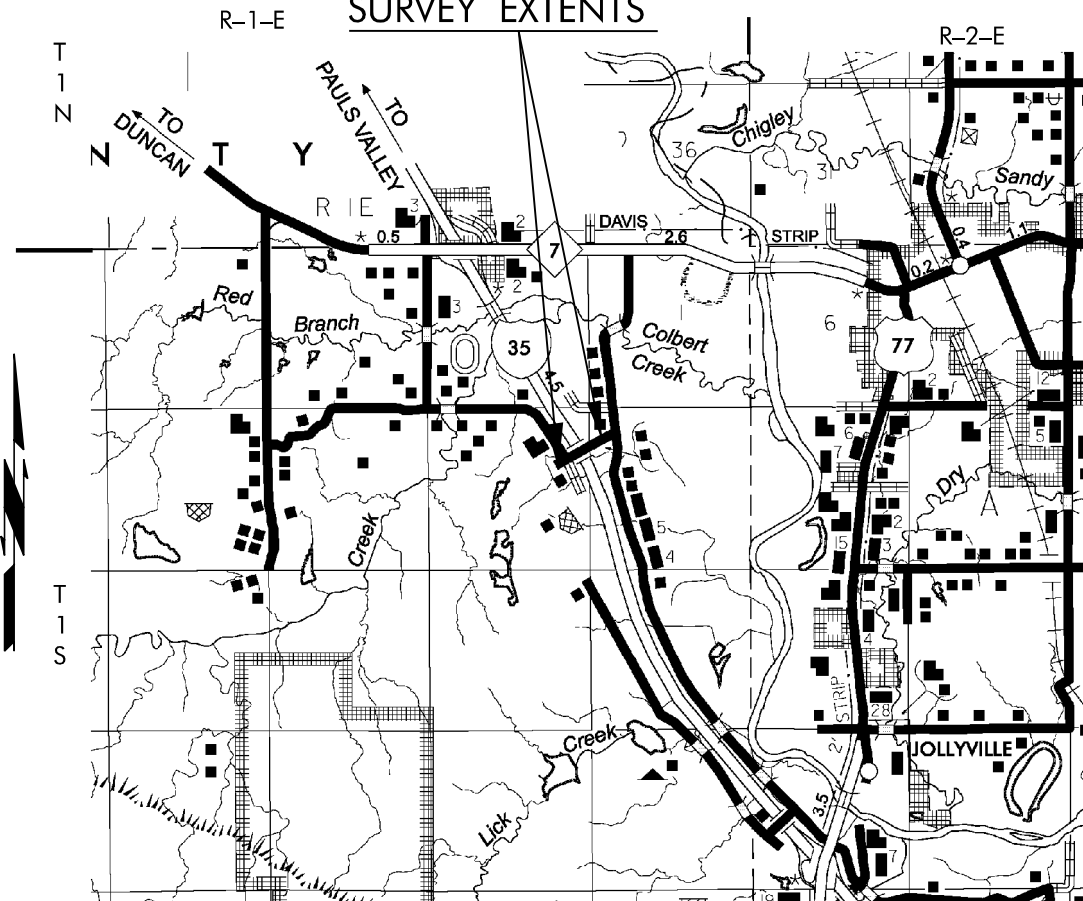
SURVEY OF
I-35
SWO 5028(1)
J/P NO. 30363(04)

MURRAY COUNTY

I-35, ROCK CRUSHER ROAD OVER I-35, 8.3 MILES
NORTH OF THE CARTER COUNTY LINE

PROJECT LOCATION

SURVEY EXTENTS



PROJECT LENGTH 3398.83 Ft. 0.64 MI.

PUBLIC ROAD #5 (ROCK CRUSHER ROAD) BEGINNING STATION : 18+22.86
ENDING STATION : 33+82.03

PUBLIC ROAD #4 (I-35 LT. FRONTAGE ROAD) BEGINNING STATION : 2857+24.47
ENDING STATION : 2872+26.97

I-35 BEGINNING STATION : 2862+20
ENDING STATION : 2865+30

Electronic File Transfer Disclaimer:

These Files, Drawings and/or Notes are provided for information only. The Oklahoma Department of Transportation (ODOT) and the Owner cannot be held responsible for the content or accuracy of these Files, Drawings and/or Notes due to conversions, software translations, or any other manipulation of said Files, Drawings and/or Notes. ODOT expressly disclaims any responsibility arising from any use of these Files, Drawings and/or Notes. To the full extent permitted by applicable law, the recipient of these Files, Drawings and/or Notes hereby agrees to defend, indemnify, and hold harmless ODOT and the Owner from and against any and all claims, suits, actions, damages, loss, liability or costs of every nature or description (including reasonable attorney's fees) arising from, or in any way attributable to or connected with any of these Files, Drawings and/or Notes.



INDEX OF SHEETS

- 1 TITLE SHEET
- 2-3 HISTORICAL LETTER & WRITTEN REPORT
- 4-6 COGO POINTS & ALIGNMENT DATA
- 7-12 SURVEY DATA SHEETS

SURVEY BEGAN: September 10, 2013
SURVEY COMPLETED: October 30, 2013

PERSONNEL:
MONTE KING TITLE: PROFESSIONAL LAND SURVEYOR
MATT SUTTERFIELD CREW CHIEF
CODY KEETH FIELD PERSONEL

EQUIPMENT:
LEICA TCA 1103 ROBOTIC TOTAL STATION
TOPCON AUTOMATIC LEVEL
TOPCON HIPER GA GPS SYSTEM
CARLSON SURVEYOR DATA COLLECTOR W/CARLSON SURV CE

STATE OF OKLAHOMA
DEPARTMENT OF TRANSPORTATION

SWO 5028(1) Job/Piece 30363(04) Engr. Contract No. 1439-F
T.O. 2

LAND SURVEYOR'S CERTIFICATION

I hereby certify that all land and property sub-division distances, angles, corners, and monuments made or used in conjunction with this survey and depicted or recorded herein or hereon were recovered, established or re-established in substantial conformity with:

- Applicable instructions contained in the U.S. Government Bureau of Land Management publication "Manual of Survey Instruction".
- Its supplement "Restoration of Lost or Obliterated Corners and Sub-division of Sections";
- "Oklahoma Minimum Standards for the Practice of Land Surveying" as adopted by the State Board of Licensure for Professional Engineers and Land Surveyors; and
- Sound land surveying practices;

including a thorough search, study, analysis and consideration of all existing records and field evidence.

I further certify that all survey monuments depicted exist and that all land survey work was done by me or under my direct supervision.

Dated this 20th day of February, 2014.

Land Surveyor

Monte Duane King
Signature
REGISTERED LAND SURVEYOR
MONTE DUANE KING
L.S. 1237
OKLAHOMA

Monte Duane King
Printed Name

Oklahoma Licensed Land Surveyor No. 1271

Certificate of Authorization No. 5954

STATE OF OKLAHOMA DEPARTMENT
OF TRANSPORTATION SURVEY
DIVISION

SWO 5028(1) J/P 30363(04) I-35 CO. MURRAY

HORIZONTAL CONTROL:

- () Oklahoma Coordinate System of 1927 Zone.
- (X) Oklahoma Coordinate System of 1983 South Zone.
- () Oklahoma Dept. of Transportation Plane Coordinate System of 1927 Zone.
- () Oklahoma Dept. of Transportation Plane Coordinate System of 1983 Zone.
- () Arbitrary Coordinate System

HORIZONTAL PLANE DATUM DEFINITION:

Oklahoma Department of Transportation coordinates were derived by multiplying the Oklahoma Coordinate Systems of 1927 or 1983 by the combined adjustment factor of 1.00010. The ODOT Coordinate System is 2350 feet above sea level.

1. Primary Control adjusted to S.W.O. 3908(1) - Control 3rd Order
Stations: two spikes set in grass median along U.S. 77 @ I-35 interchange and 4858, 95' north.
A) Base line solutions by direct occupation of S.W.O. 3908(1) control monuments and monuments established on this survey.
B) Closure before adjustment: is () Order before adjustment.
C) Method of Distance Measurement: () Electronic (X) GPS () Triangulation () Chained
D) Instrument used for angles: () Electronic (X) GPS () Triangulation () Chained
2. Secondary Control adjusted to Primary Control (3rd) Order
Stations: M-50-419 and M-50-420

- A) Closure before adjustment: Angles
- B) Secondary Control: is (3rd) Order.
- C) Method of Distance Measurement: () Electronic (X) GPS () Triangulation () Chained
- D) Instrument used for Horiz. & Vert. control: Topcon GPS

VERTICAL CONTROL IS (3rd) order. Elevations taken from S.W.O. 3908(1) control by GPS base line solutions. Elevations established on project bench marks by conventional level loop (3rd) order between Primary Controls M-50-419 and M-50-420.

- ACCURACY DEFINITION: (X) NAVD 88 datum
- (1) HORIZONTAL: (3rd Order = Class I = 1 : 10,000')
(3rd Order = Class II = 1 : 5,000')
 - (2) VERTICAL: (1st Order = 0.017 Ft. x sqrt. of Mi.) 2nd Order = 0.035 Ft. x sqrt. of Mi.)
3rd Order = 0.050 Ft. x sqrt. of Mi.)

Copy w/survey reports: Monte Duane King
Copy in each Alignment: Professional Land Surveyor
and level book.

February 20, 2014

Date

(FORM SD #20)
Rev. 11/03

UTILITIES

Utility	Phone Number
Fiber Optic:	
Chickasaw Telephone Co.	(580)320-4149
Level 3 Communications	(405)202-4128
Qwest Communications	1-800-283-4237
AT&T	(405)246-6862
Telephone Lines:	
AT&T	(405)246-6862
Electric Lines:	
O.G.&E.	(405)553-4294
Red River Valley Electric	(580)963-3161
Western Farmers Electric Coop	(405)247-3351
Natural Gas Lines:	
Atlas Pipeline	(580)465-2004
Water Lines:	
Rural Water District #2	(580)238-0236

THIS SURVEY MEETS THE OKLAHOMA MINIMUM STANDARDS FOR THE PRACTICE OF LAND SURVEYING AS ADOPTED BY THE OKLAHOMA STATE BOARD OF REGISTRATION FOR PROFESSIONAL ENGINEERS AND LAND SURVEYORS, MAY 17, 2010.

SPECIFICATIONS FOR SURVEYS FOR PRIMARY AND SECONDARY HIGHWAYS DATED JANUARY 2011 GOVERN.

SDS 1 OF 17

OKLAHOMA DEPARTMENT OF TRANSPORTATION SURVEY DIVISION			
SURVEY DATA SHEET			
PLS	MDK		
DRAWN	MDK		
CHECKED	TRK		
APPROVED	MDK		
CREW	MS		
		SWO 5028	1() PROJECT NO. 30363(04) SHEET NO. S-1