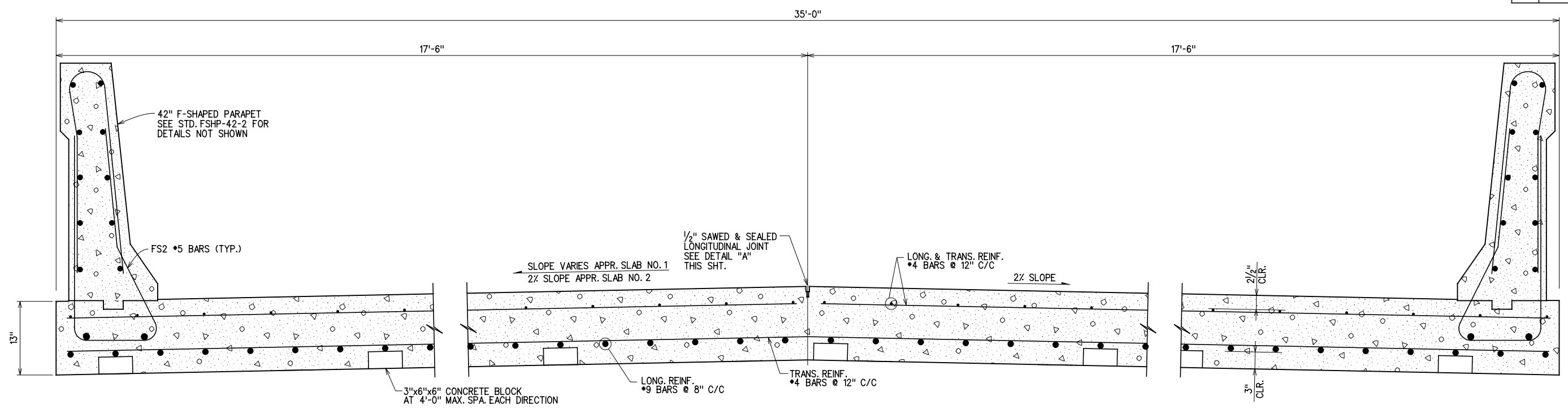
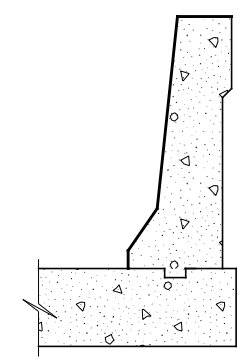


REV. NO.	DESCRIPTION	REVISIONS	DATE



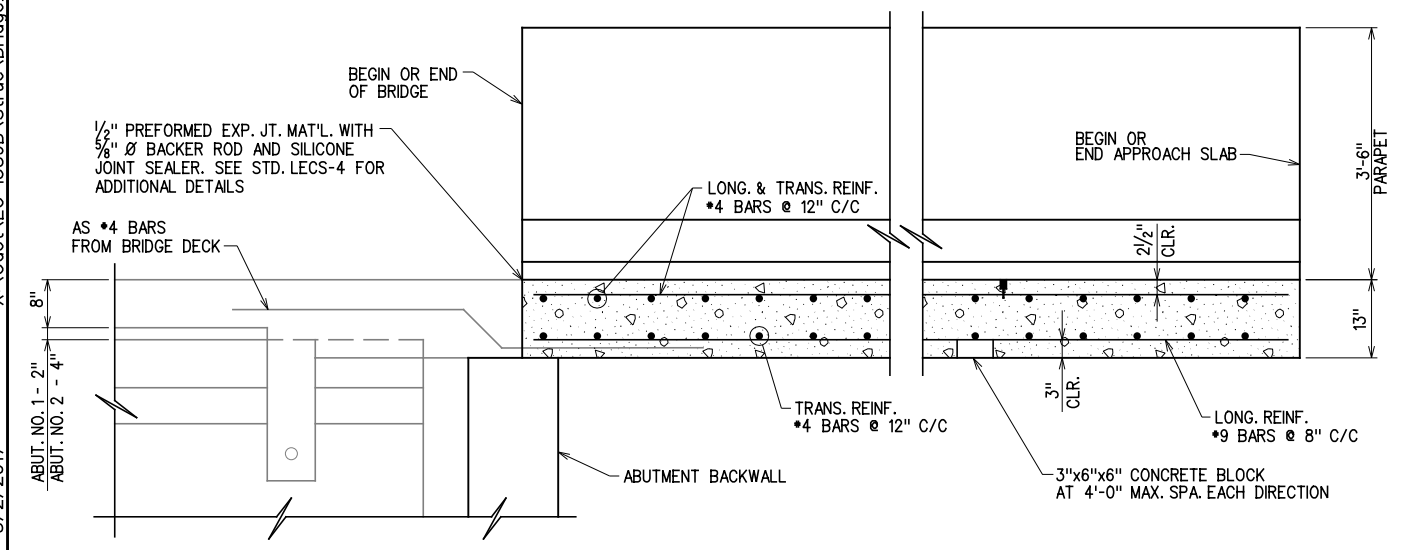
**TRANSVERSE SECTION THRU APPROACH SLAB**  
(SECTION LOOKING UP STATION)

**NOTE:**  
THE REINFORCING STEEL IN THE TOP OF THE APPROACH SLAB SHALL END 2" EITHER SIDE OF THE LONGITUDINAL JOINT

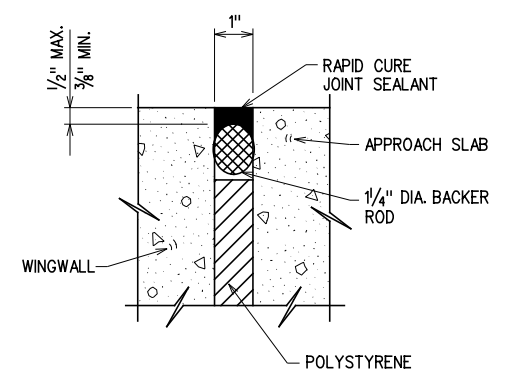


**PENETRATING WATER REPELLENT TREATMENT**

**NOTE:**  
SURFACES INDICATED WITH HEAVY LINES SHALL BE TREATED WITH A PENETRATING WATER REPELLENT SURFACE TREATMENT.

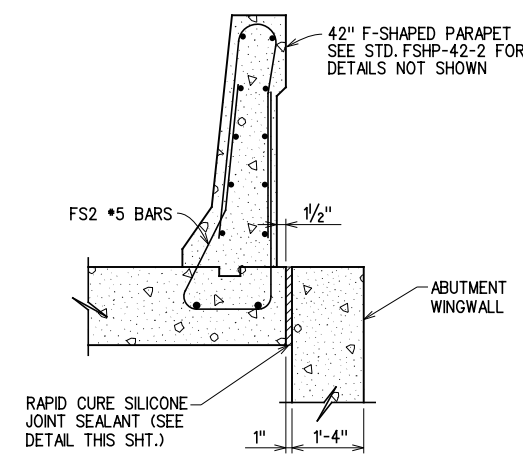


**LONGITUDINAL SECTION THRU APPROACH SLAB**

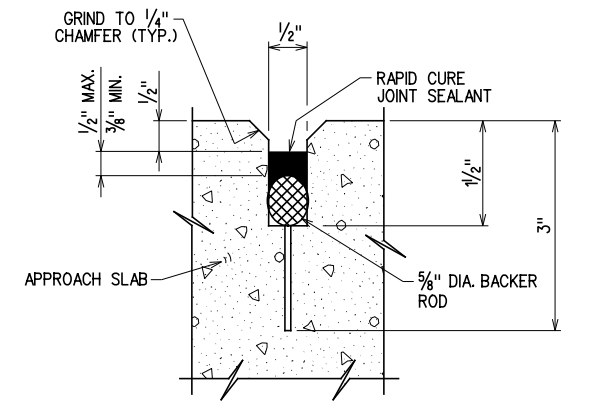


**DETAIL OF RAPID CURE JOINT SEALANT BETWEEN WING WALL AND APPROACH SLAB**

**NOTE:** FOR DETAILS NOT SHOWN SEE STD. LECS-4



**DETAIL OF APPROACH SLAB AT ABUTMENT WING**



**DETAIL "A"**

X:\Odot\EC-1589B\Struc\Bridge\_A\APPR.dgn 3/2/2017

DESIGN		ROCK CRUSHER RD. OVER I-35	MURRAY COUNTY
DRAWN		BRIDGE "A"	
CHECKED		<b>APPROACH SLAB DETAILS</b>	
APPROVED		(2 OF 2)	
SQUAD	G/K ENGR.	JOB PIECE NO. 30363(04)	SHEET NO. 78