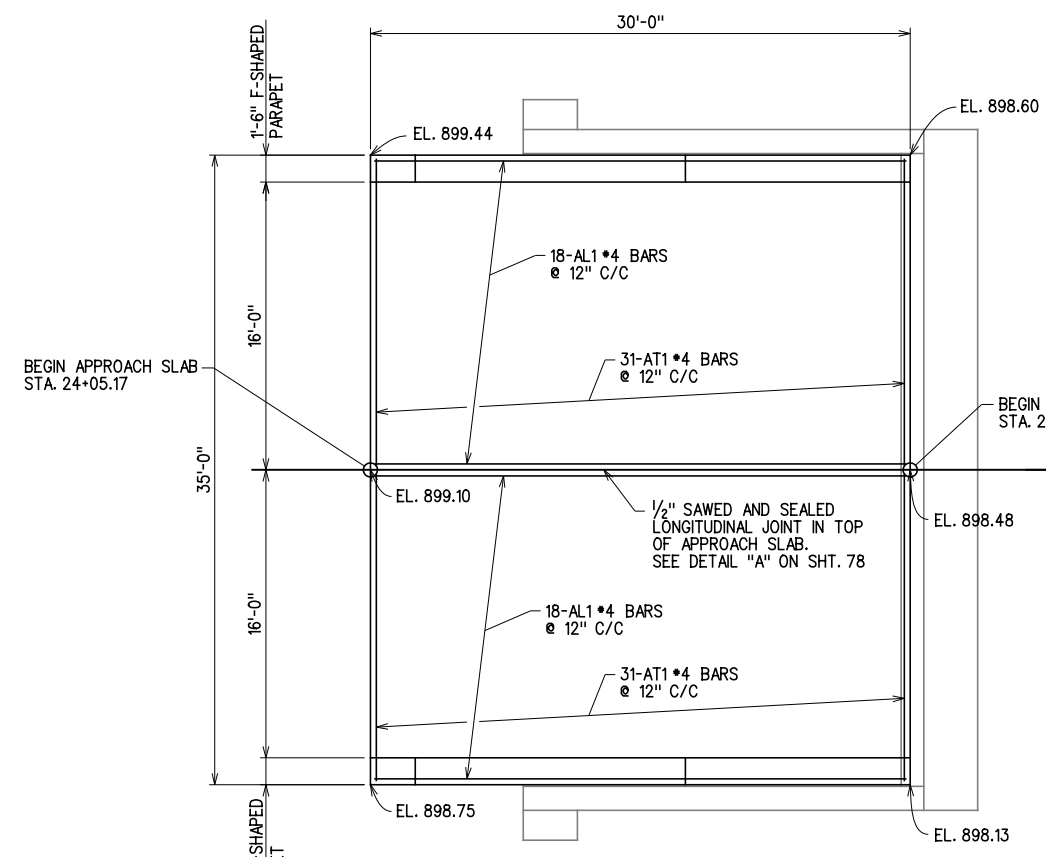
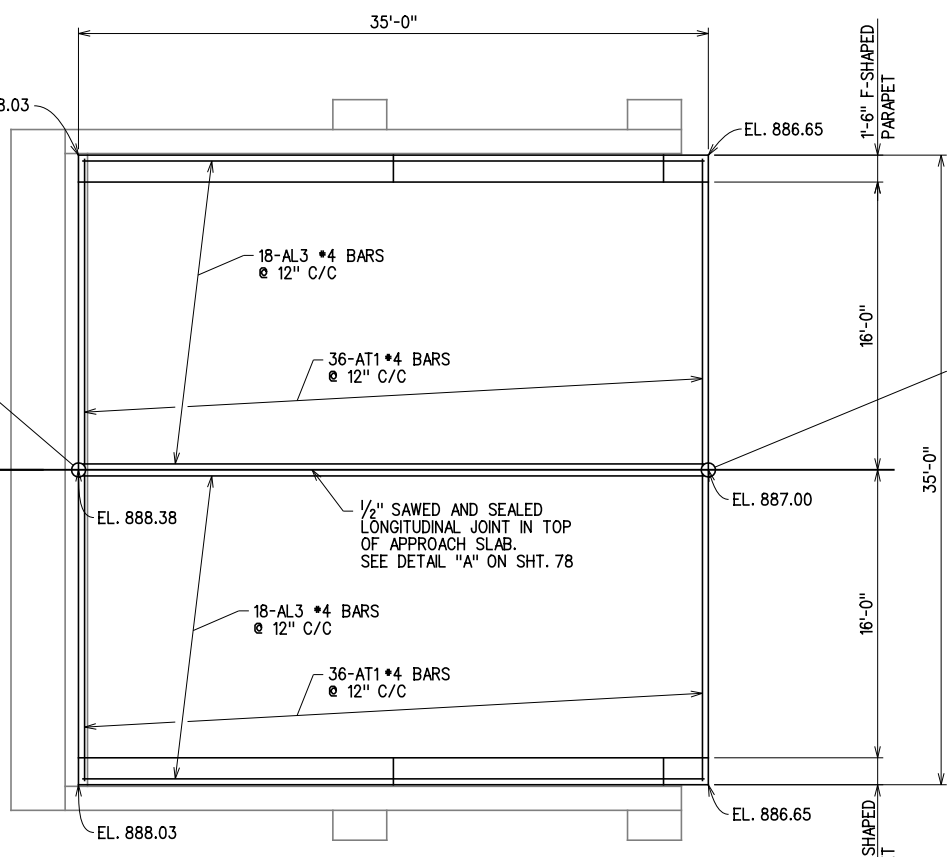


REV. NO.	DESCRIPTION	DATE



PLAN - APPROACH SLAB ABUT. NO. 1
TOP MAT OF REINFORCING SHOWN

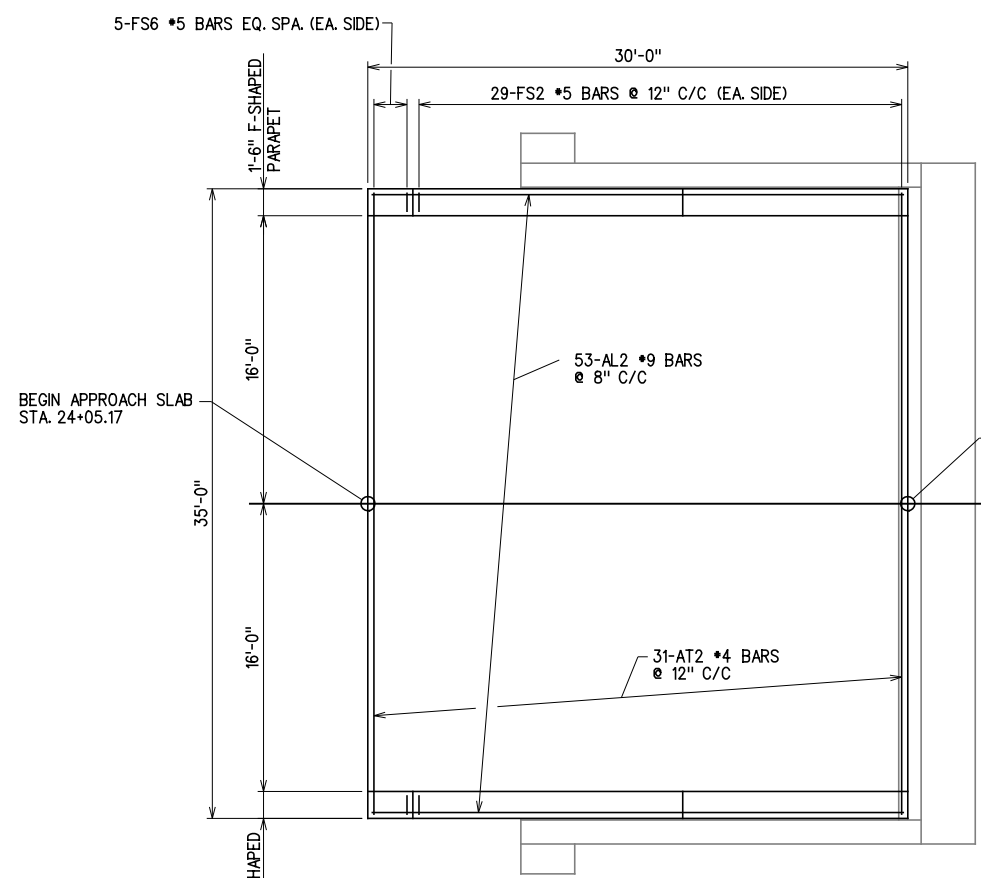


PLAN - APPROACH SLAB ABUT. NO. 2
TOP MAT OF REINFORCING SHOWN

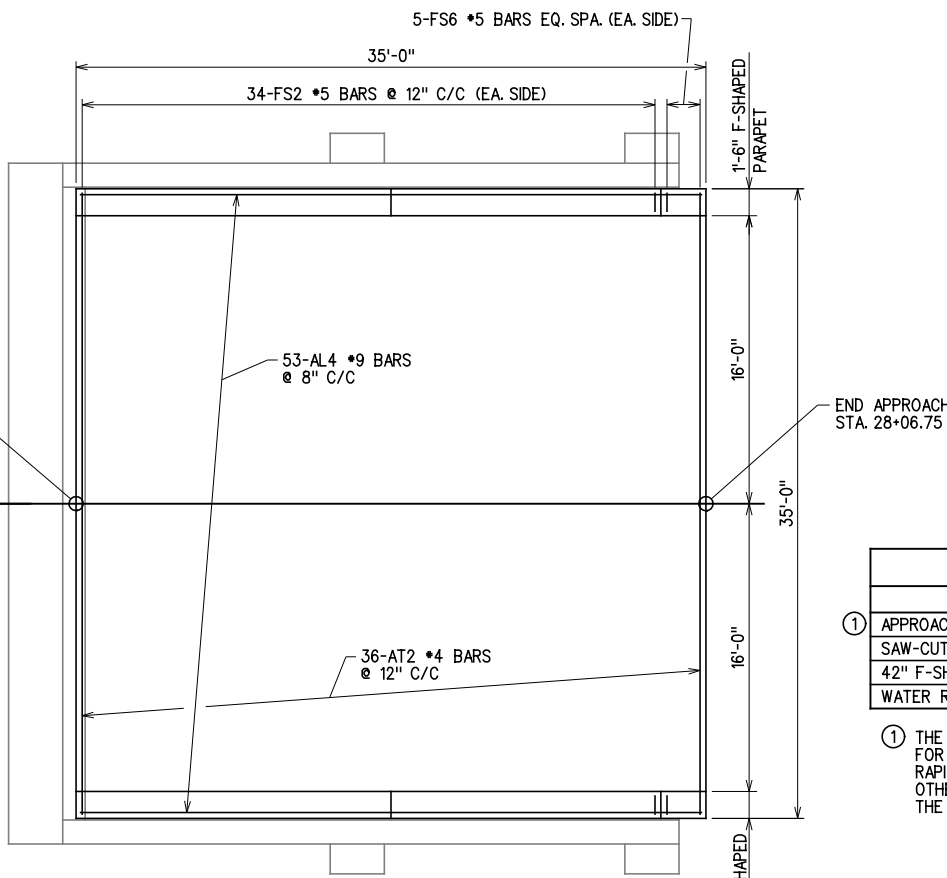
APPROACH SLAB BAR LIST					
APPROACH SLAB ABUT. NO. 1					
MARK	NO.	SIZE	FORM	LENGTH	LENGTH VARIATION
EPOXY COATED REINFORCING					
AL1	36	#4	STR.	29'-8"	
AL2	53	#9	STR.	29'-8"	
AT1	62	#4	STR.	17'-2"	
AT2	31	#4	STR.	34'-8"	
FS2	58	#5	BNT.	7'-4"	PARAPET REINFORCING
FS6	10	#5	BNT.	7'-6/2"	PARAPET REINFORCING

APPROACH SLAB BAR LIST					
APPROACH SLAB ABUT. NO. 2					
MARK	NO.	SIZE	FORM	LENGTH	LENGTH VARIATION
EPOXY COATED REINFORCING					
AL3	36	#4	STR.	34'-8"	
AL4	53	#9	STR.	34'-8"	
AT1	72	#4	STR.	17'-2"	
AT2	36	#4	STR.	34'-8"	
FS2	68	#5	BNT.	7'-4"	PARAPET REINFORCING
FS6	10	#5	BNT.	7'-6/2"	PARAPET REINFORCING

NOTE:
DO NOT SAW-CUT GROOVE WITHIN 6" OF THE LONGITUDINAL JOINT AND THE CONSTRUCTION JOINT BETWEEN THE APPROACH SLAB AND THE DECK SLAB.



PLAN - APPROACH SLAB ABUT. NO. 1
BOTTOM MAT OF REINFORCING SHOWN



PLAN - APPROACH SLAB ABUT. NO. 2
BOTTOM MAT OF REINFORCING SHOWN

APPROACH SLAB QUANTITIES				
ITEM	UNIT	APPR. 1	APPR. 2	TOTAL
① APPROACH SLAB	S.Y.	116.7	136.1	252.8
SAW-CUT GROOVING	S.Y.	106.7	124.4	231.1
42" F-SHAPED PARAPET	L.F.	60.0	70.0	130.0
WATER REPELLENT (VISUALLY INSPECTED)	S.Y.	30.0	35.0	65.0

① THE CONTRACT UNIT PRICE FOR APPROACH SLAB SHALL BE FULL COMPENSATION FOR CONCRETE, REINFORCING STEEL (INCLUDING FS2 & FS6 BARS), BACKER ROD, RAPID CURE JOINT SEALANT, POLYSTYRENE, EXCAVATION, LABOR, EQUIPMENT AND OTHER INCIDENTALS NECESSARY TO COMPLETE THE WORK AS SPECIFIED ON THE PLANS.

NOTE:
FOR 42" F-SHAPED PARAPET REINFORCING BAR BENDS, SEE STD. FSHP-42-2.

DESIGN		ROCK CRUSHER RD. OVER I-35	MURRAY COUNTY
DRAWN		BRIDGE "A"	
CHECKED		APPROACH SLAB DETAILS (1 OF 2)	
APPROVED			
SQUAD	G/K ENGR.		

X:\Odot\EC-1589B\Struc\Bridge_A_APPR.dgn

3/2/2017