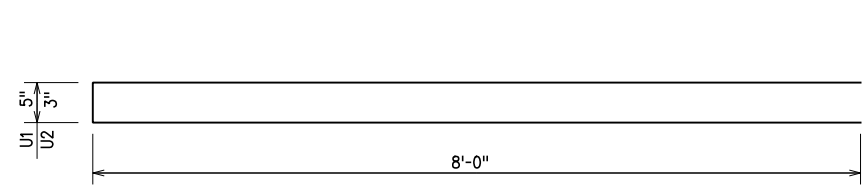
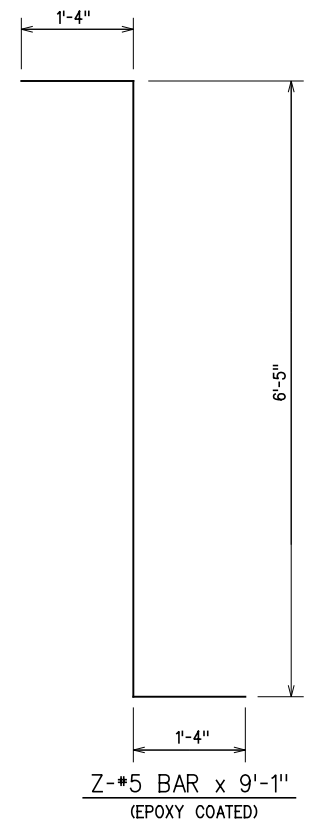


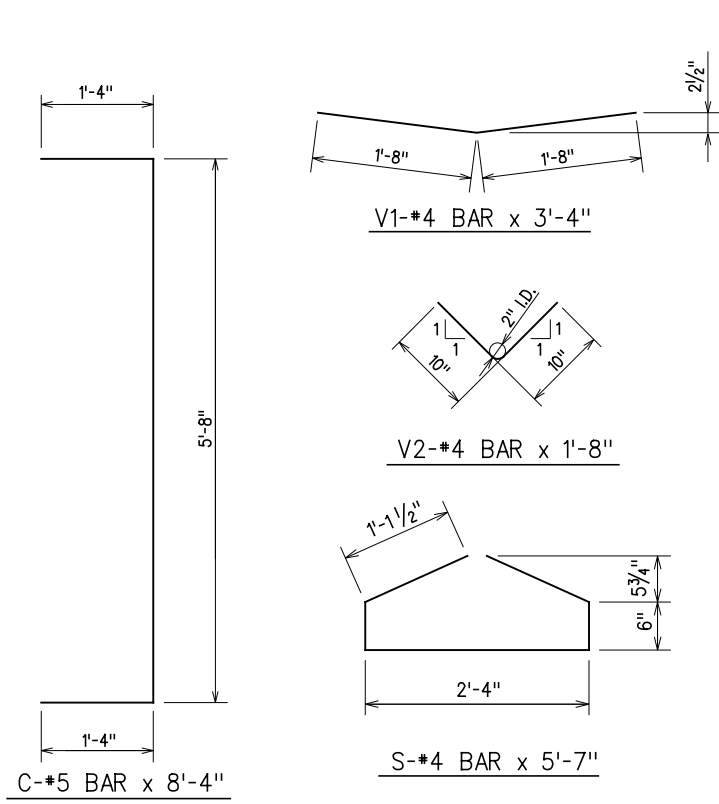
REV. NO.	DESCRIPTION	REVISIONS	DATE



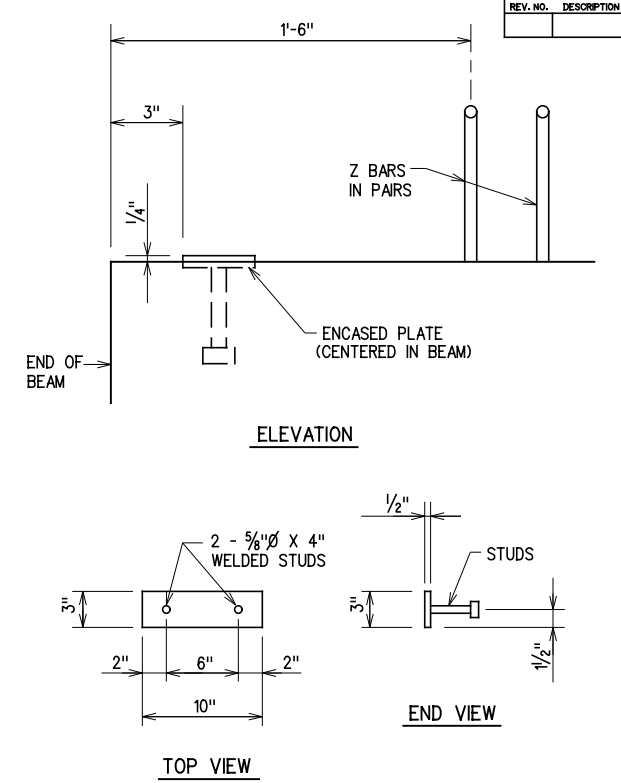
U1-#4 BAR x 16'-5"
U2-#4 BAR x 16'-3"



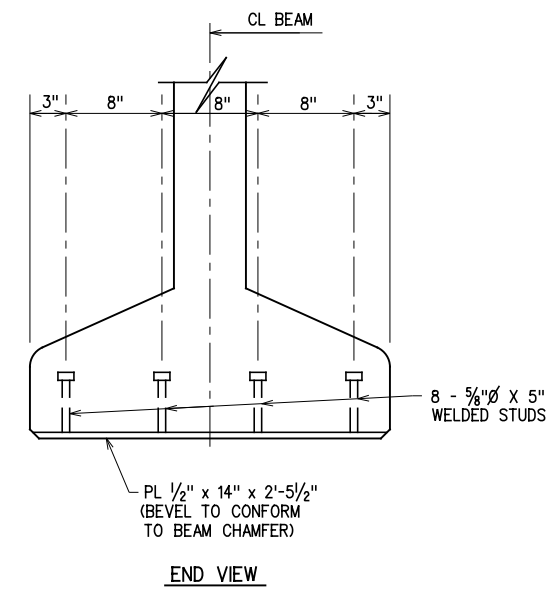
Z-#5 BAR x 9'-1"
(EPOXY COATED)



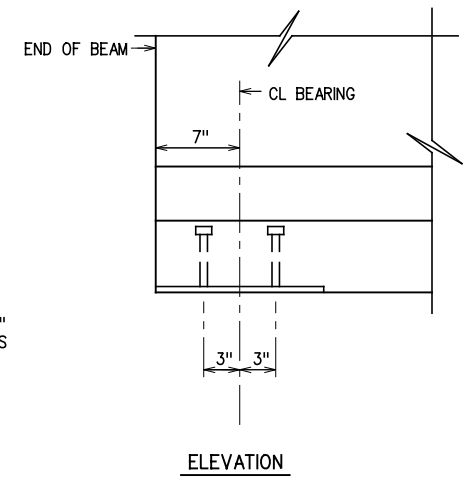
BAR BENDING DIAGRAMS
(ALL DIMENSIONS ARE OUT TO OUT)



ENCASED BEAM PLATE DETAILS
NOTE:
ENCASED BEAM PLATE LOCATED AT EXPANSION END ONLY.

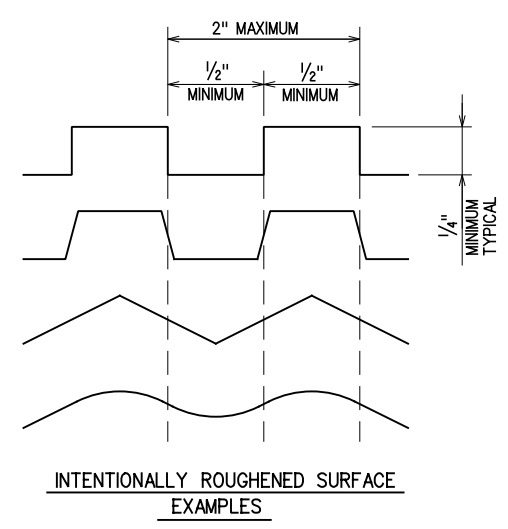


END VIEW



ELEVATION

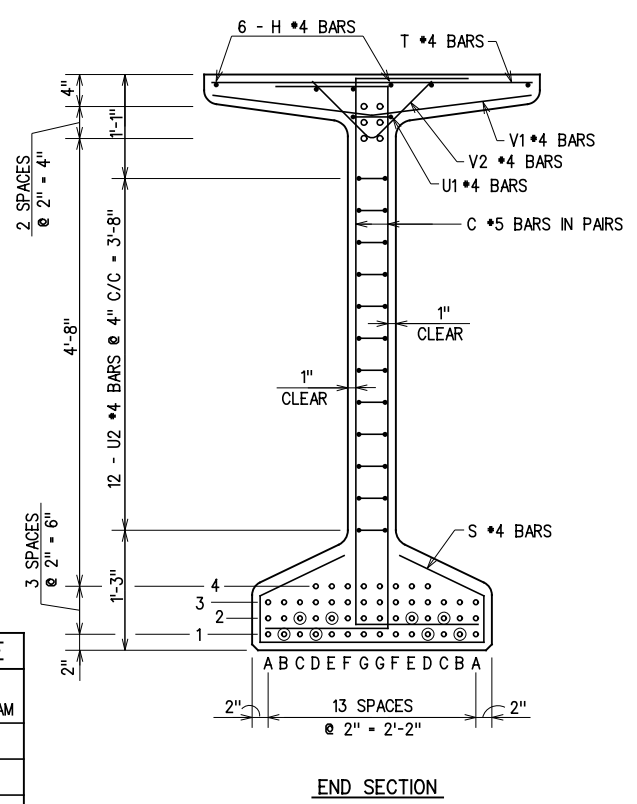
ENCASED SOLE PLATE DETAILS
NOTE:
ENCASED SOLE PLATE LOCATED AT EACH END OF BEAM.



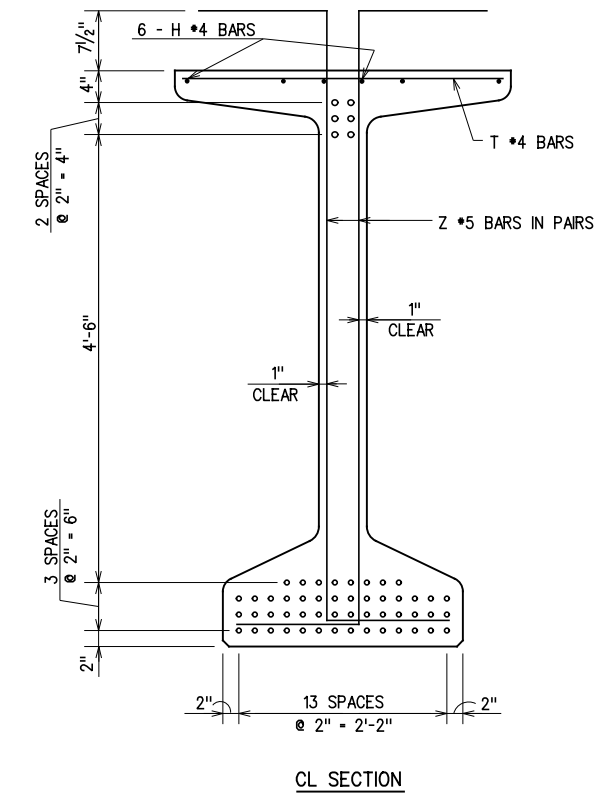
INTENTIONALLY ROUGHENED SURFACE
EXAMPLES

TOP SURFACE OF P.C. BEAMS SHALL BE INTENTIONALLY ROUGHENED TO A MINIMUM HEIGHT OF 1/4" OVER A MAXIMUM PITCH OF 2" MEASURED LONGITUDINALLY ALONG THE LENGTH OF THE BEAM. THE CREST AND TROUGH ASSOCIATED WITH THE HEIGHT SHALL NOT BE LESS THAN 1/2" AND SHALL EXTEND THE FULL WIDTH OF THE TOP FLANGE. ROUGHENED SURFACE MAY BE OBTAINED BY A SPECIAL TROWEL AS SHOWN IN THE EXAMPLES, BY CLEANING THE CONCRETE SURFACE WITH A STIFF WIRE BRUSH (OR BLASTING) TO THE EXTENT THAT AGGREGATE IS EXPOSED TO A HEIGHT OF 1/4", OR BY ANOTHER APPROVED METHOD. THE METHOD USED SHALL BE SUBMITTED FOR APPROVAL BY THE ENGINEER. REPAIR ANY DAMAGE TO REINFORCEMENT EPOXY COATING BEFORE PLACEMENT OF DECK CONCRETE.

DEBOND PAIR	DEBOND LENGTH FROM END OF BEAM
B1	29'-0"
D1	20'-0"
C2	13'-0"
E2	6'-0"



END SECTION



CL SECTION

TYPE J BEAM SECTIONS
56 - 0.6 ϕ STRANDS

DESIGN		ROCK CRUSHER RD. OVER I-35	MURRAY COUNTY
DRAWN		BRIDGE "A"	
CHECKED		TYPE J P.C. BEAM DETAILS	
APPROVED		(2 OF 2)	
SQUAD	G/K ENGR.	JOB PIECE NO. 30363(04)	SHEET NO. 72

X:\Odot\EC-1589B\Struc\Bridge_A\beamTYPE.J.dgn 3/2/2017