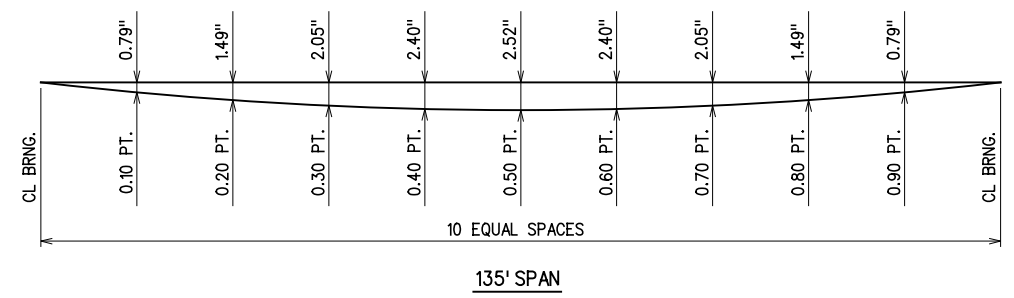


REV. NO.	DESCRIPTION	DATE

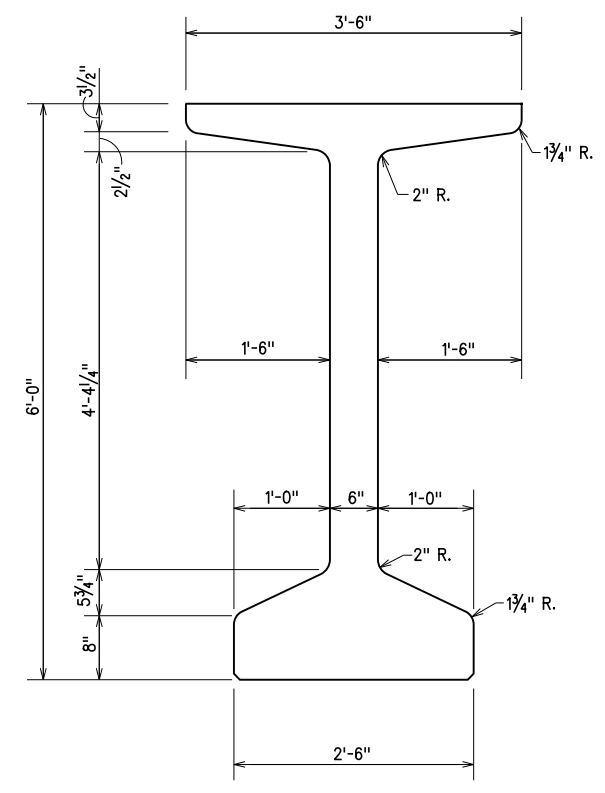
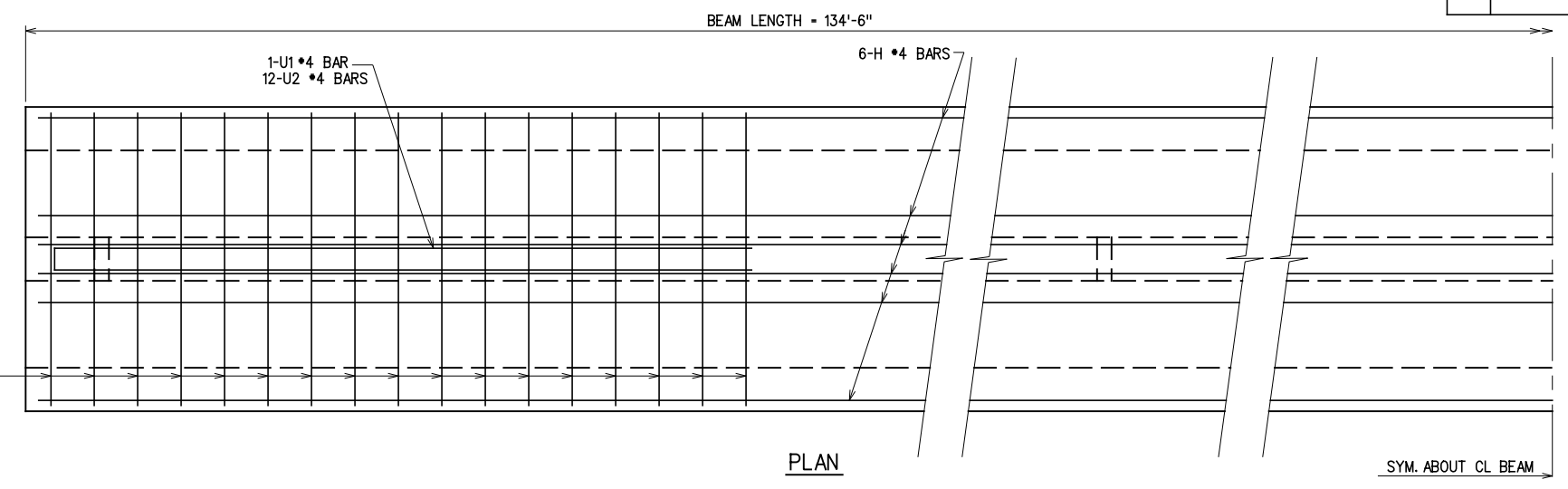


DEAD LOAD DEFLECTION

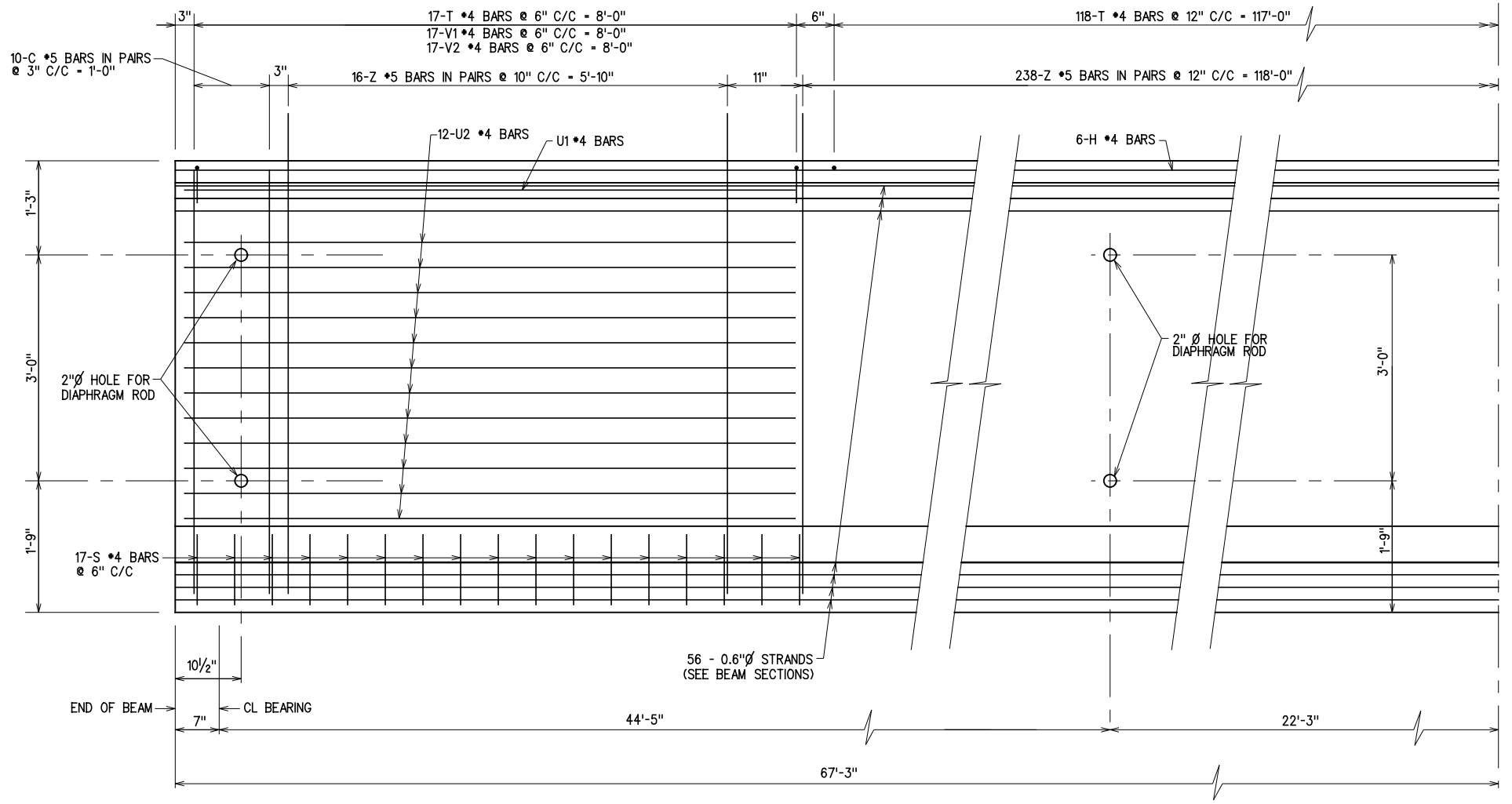
DEFLECTION NOTES:

THE DEAD LOAD DEFLECTION SHOWN ABOVE AT THE TENTH POINTS ARE THE INITIAL DEFLECTIONS DUE TO DECK SLAB + DIAPHRAGMS + HAUNCH + 5 p.s.f. DECK FORM ALLOWANCE + CONCRETE TRAFFIC RAIL. IT DOES NOT INCLUDE THE BEAM WEIGHT OR FUTURE WEARING SURFACE.

17-T *4 BARS
17-V1 *4 BARS
17-V2 *4 BARS
(TOP OF BEAM)
17-S *4 BARS
(BOTTOM OF BEAM)



END VIEW
(TYPE J P.C.B.)



ELEVATION

PRESTRESSED CONCRETE BEAM NOTES

COMPRESSIVE STRENGTH: THE REQUIRED COMPRESSIVE STRENGTH OF THE CONCRETE IN THE P.C. BEAMS IS 7.0 ksi AT TRANSFER OF PRESTRESS AND 10.0 ksi AT 28 DAYS.

STRAND TYPE: THE TYPE OF PRESTRESSING STRAND REQUIRED IN THE P.C. BEAMS IS LOW-RELAXATION WITH A NOMINAL DIAMETER OF 0.6 INCHES AND AN ULTIMATE TENSILE STRENGTH OF 270 ksi.

NOTES:

- DIAPHRAGM HOLE LOCATIONS ARE AT CL OF BEAM. VARIATIONS FOR CROSS SLOPE NOT SHOWN. SEE SHT. 62

DESIGN		ROCK CRUSHER RD. OVER I-35		MURRAY COUNTY	
DESIGN		BRIDGE "A"		TYPE J P.C. BEAM DETAILS	
DRAWN				(1 OF 2)	
CHECKED					
APPROVED					
SQUAD	G/K ENGR.	JOB PIECE NO.	30363(04)	SHEET NO.	71

X:\Odot\EC-1589B\Struc\Bridge_A\beamTYPE.J.dgn

3/2/2017