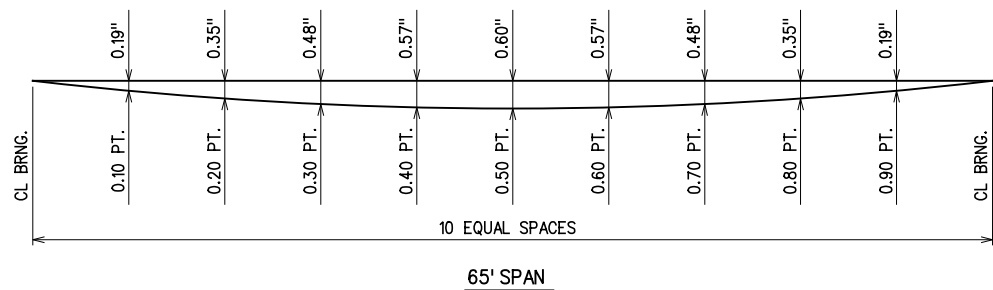


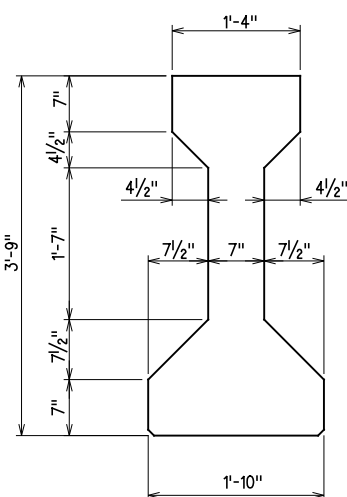
REV. NO.	DESCRIPTION	DATE



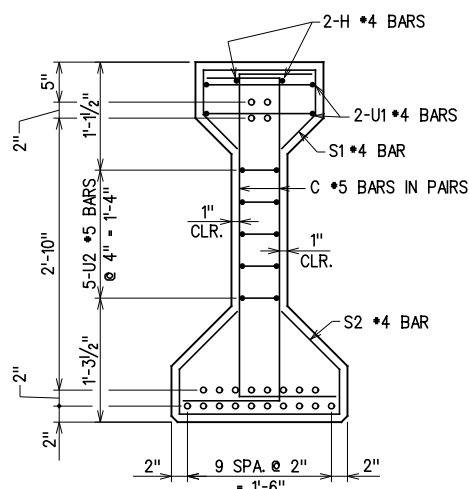
**DEAD LOAD DEFLECTION**

**DEFLECTION NOTES:**

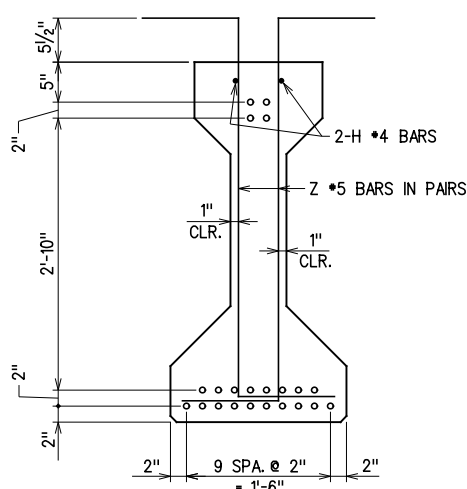
THE DEAD LOAD DEFLECTION SHOWN ABOVE AT THE TENTH POINTS ARE THE INITIAL DEFLECTIONS DUE TO DECK SLAB + DIAPHRAGMS + HAUNCH + 5 p.s.f. DECK FORM ALLOWANCE + CONCRETE TRAFFIC RAIL. IT DOES NOT INCLUDE THE BEAM WEIGHT OR FUTURE WEARING SURFACE.



**END VIEW**  
(TYPE III P.C.B.)

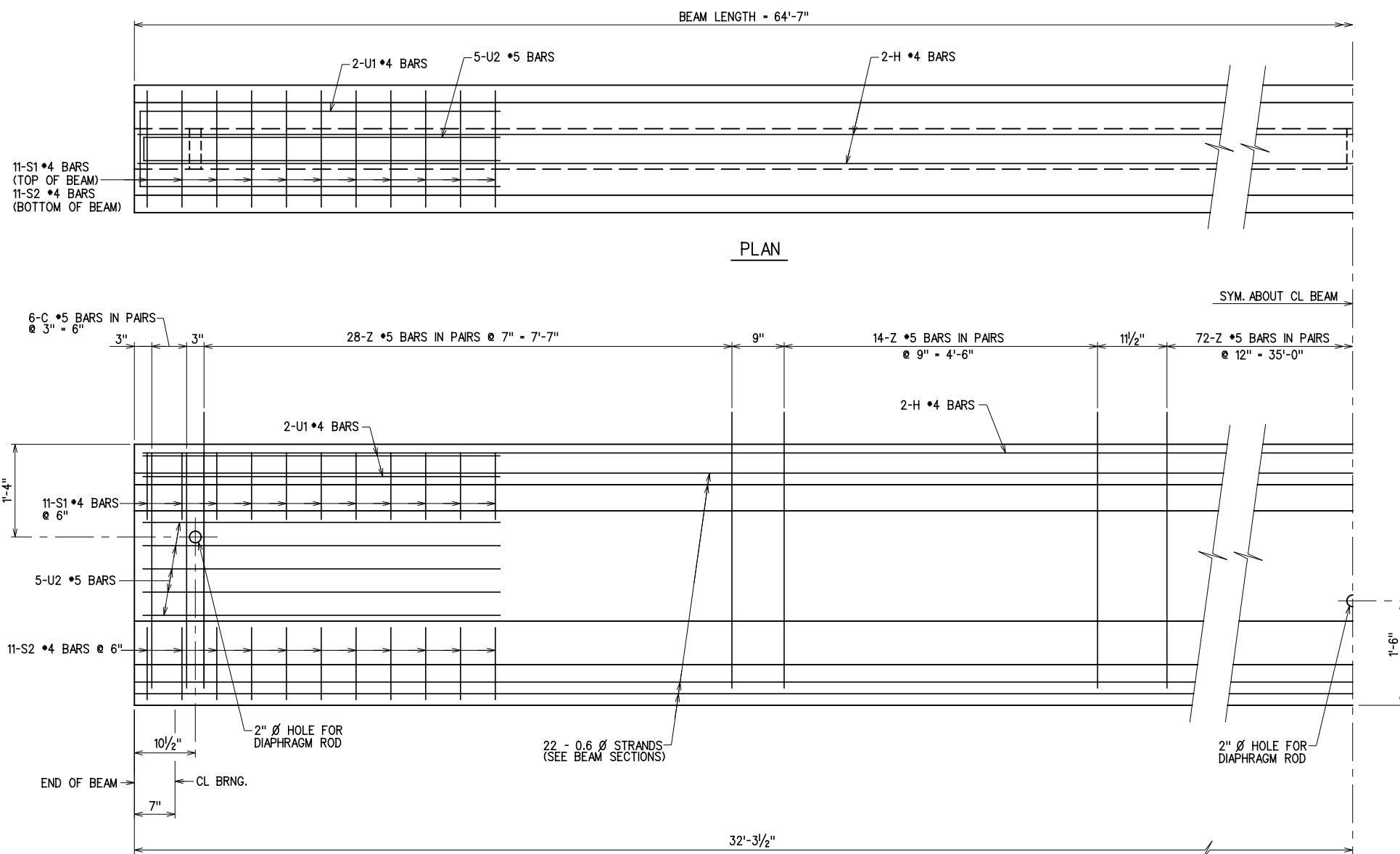


**END SECTION**



**CL SECTION**

**TYPE III BEAM SECTIONS**  
22 - 0.6 Ø STRANDS



**ELEVATION**

**PRESTRESSED CONCRETE BEAM NOTES**

**COMPRESSIVE STRENGTH:** THE REQUIRED COMPRESSIVE STRENGTH OF THE CONCRETE IN THE P.C. BEAMS IS 6.0 ksi AT TRANSFER OF PRESTRESS AND 8.0 ksi AT 28 DAYS.

**STRAND TYPE:** THE TYPE OF PRESTRESSING STRAND REQUIRED IN THE P.C. BEAMS IS LOW-RELAXATION WITH A NOMINAL DIAMETER OF 0.6 INCHES AND AN ULTIMATE TENSILE STRENGTH OF 270 ksi.

**NOTES:**

- DIAPHRAGM HOLE LOCATIONS ARE AT CL OF BEAM. VARIATIONS FOR CROSS SLOPE NOT SHOWN. SEE SHT. 62

SPAN 1		ROCK CRUSHER RD. OVER I-35	MURRAY COUNTY
DESIGN		BRIDGE "A"	
DRAWN		<b>TYPE III P.C. BEAM DETAILS</b> (1 OF 2)	
CHECKED			
APPROVED			
SQUAD	G/K ENGR.	JOB PIECE NO. 30363(04)	SHEET NO. 69

X:\Odot\EC-1589B\Struc\Bridge\_A\BEAM - TYPE 3.dgn

3/2/2017