

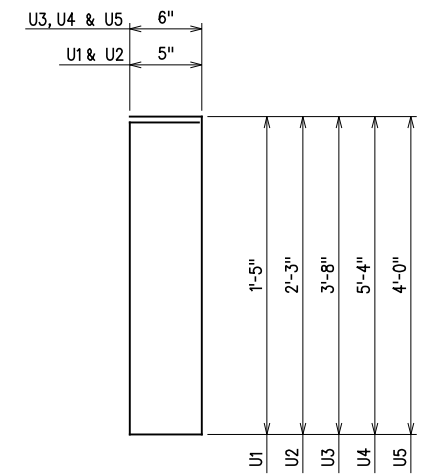
SUPERSTRUCTURE BAR LIST					
SPAN 1					
MARK	NO.	SIZE	FORM	LENGTH	LENGTH VARIATION
EPOXY COATED REINFORCING					
A1	67	*5	BNT.	35'-10"	
A2	132	*6	BNT.	36'-0"	
B	135	*5	STR.	34'-8"	
ET1	36	*4	STR.	67'-5"	
EB1	53	*5	STR.	67'-11"	
AH1	12	*4	BNT.	3'-1"	
AH2	27	*4	BNT.	4'-7"	
AS	36	*4	BNT.	5'-0"	
AT	2	*4	STR.	34'-8"	
EPH1	36	*4	BNT.	3'-2"	
EPT	1	*4	STR.	34'-8"	
F1	18	*4	STR.	8'-3"	IN INTER. DIAPHRAGM
F2	24	*4	STR.	7'-6"	IN END DIAPHRAGM
F3	12	*4	STR.	8'-3"	IN END DIAPHRAGM
U1	27	*4	BNT.	4'-1"	IN INTER. DIAPHRAGM
U2	78	*4	BNT.	5'-9"	IN END DIAPHRAGM
FS2	96	*5	BNT.	7'-4"	PARAPET REINFORCING
L	40	*4	BNT.	1'-3"	PARAPET REINFORCING

- ① INCLUDES (2) ADDITIONAL "B" BARS AT EXPANSION DEVICE.
- ② INCLUDES 2'-0" FOR (1) 2'-0" LAP SPLICE. STAGGER SPLICES.
- ③ INCLUDES 2'-6" FOR (1) 2'-6" LAP SPLICE. STAGGER SPLICES.

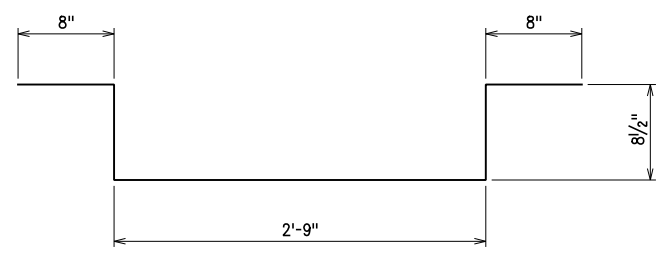
SUPERSTRUCTURE BAR LIST					
SPAN 2					
MARK	NO.	SIZE	FORM	LENGTH	LENGTH VARIATION
EPOXY COATED REINFORCING					
A1	136	*5	BNT.	35'-10"	
A2	270	*6	BNT.	36'-0"	
B	273	*5	STR.	34'-8"	
ET2	36	*4	STR.	278'-4"	
EB2	53	*5	STR.	280'-4"	
EPH2	36	*4	BNT.	3'-7"	
EPT	1	*4	STR.	34'-8"	
FPH	32	*4	BNT.	5'-6"	
FPT	1	*4	STR.	30'-8"	
F4	84	*4	STR.	8'-4"	IN INTER. DIAPHRAGM
F5	12	*6	STR.	5'-4"	IN END DIAPHRAGM
F6	72	*6	STR.	8'-4"	IN END DIAPHRAGM
U3	66	*4	BNT.	8'-10"	IN INTER. DIAPHRAGM
U4	36	*4	BNT.	12'-2"	IN END DIAPHRAGM
U5	24	*4	BNT.	9'-6"	IN END DIAPHRAGM
FS2	272	*5	BNT.	7'-4"	PARAPET REINFORCING

- ① INCLUDES (2) ADDITIONAL "B" BARS AT EXPANSION DEVICE.
- ② INCLUDES 8'-0" FOR (4) 2'-0" LAP SPLICES. BARS SHALL BE CONTINUOUS THRU CONSTRUCTION JOINT AT FIXED PIERS INTO ADJACENT SPAN. DO NOT LAP WITHIN 10' OF CENTERLINE OF FIXED PIER. STAGGER SPLICES.
- ③ INCLUDES 10'-0" FOR (4) 2'-6" LAP SPLICES. BARS SHALL BE CONTINUOUS THRU CONSTRUCTION JOINT AT FIXED PIERS INTO ADJACENT SPAN. DO NOT LAP WITHIN 10' OF CENTERLINE OF FIXED PIER. STAGGER SPLICES.

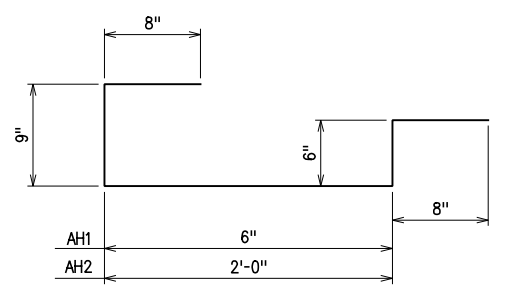
SUPERSTRUCTURE BAR LIST					
SPAN 3					
MARK	NO.	SIZE	FORM	LENGTH	LENGTH VARIATION
EPOXY COATED REINFORCING					
A1	137	*5	BNT.	35'-10"	
A2	272	*6	BNT.	36'-0"	
B	273	*5	STR.	34'-8"	
FPT	1	*4	STR.	30'-8"	
AH1	18	*4	BNT.	3'-1"	
AH2	18	*4	BNT.	4'-7"	
AS	36	*4	BNT.	5'-0"	
AT	2	*4	STR.	34'-8"	
F4	84	*4	STR.	8'-4"	IN INTER. DIAPHRAGM
F5	12	*6	STR.	5'-4"	IN END DIAPHRAGM
F6	72	*6	STR.	8'-4"	IN END DIAPHRAGM
U3	66	*4	BNT.	8'-10"	IN INTER. DIAPHRAGM
U4	36	*4	BNT.	12'-2"	IN END DIAPHRAGM
U5	24	*4	BNT.	9'-6"	IN END DIAPHRAGM
FS2	274	*5	BNT.	7'-4"	PARAPET REINFORCING



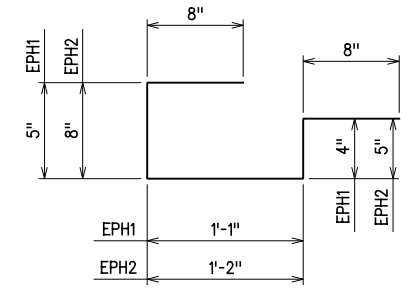
- U1-*4 BAR X 4'-1"
- U2-*4 BAR X 5'-9"
- U3-*4 BAR X 8'-10"
- U4-*4 BAR X 12'-2"
- U5-*4 BAR X 9'-6"



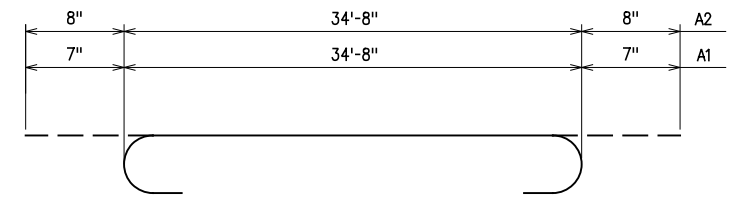
FPH-*4 BAR X 5'-6"



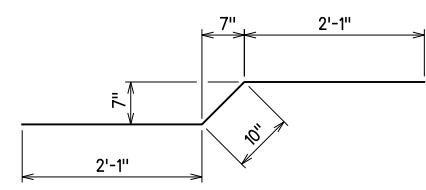
AH1-*4 BAR X 3'-1"
AH2-*4 BAR X 4'-7"



EPH1-*4 BAR X 3'-2"
EPH2-*4 BAR X 3'-7"



A1-*5 BAR X 35'-10"
A2-*6 BAR X 36'-0"



AS-*4 BAR X 5'-0"

NOTE:
1. FOR 42" F-SHAPED PARAPET REINFORCING BAR BENDS, SEE STD. FSHIP-42-2

BAR BENDING DIAGRAMS
(ALL DIMENSIONS ARE OUT TO OUT)

GROSSMAN & KEITH
ENGINEERING COMPANY
10408 GREENBRIAR PL., OKLA. CITY, OK. 73159
PH. 691-3213 FAX 691-3214
CA. *74 EXPIRES 06/30/2016

DESIGN		ROCK CRUSHER RD. OVER I-35	MURRAY COUNTY
DRAWN		BRIDGE "A"	
CHECKED		CONCRETE DECK DETAILS (3 OF 3)	
APPROVED			
SQUAD	G/K ENGR.	JOB PIECE NO. 30363(04)	SHEET NO. 68

X:\Odot\EC-1589B\Struc\Bridge_A\DECK.dgn

3/2/2017