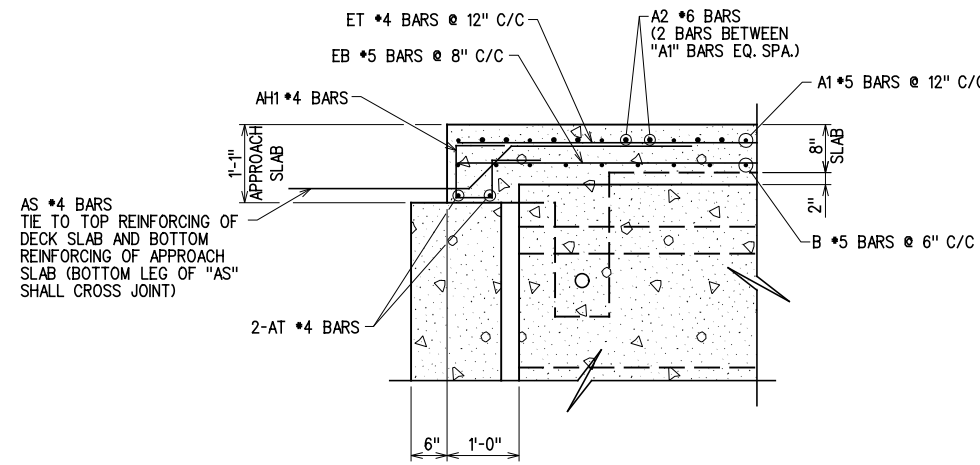
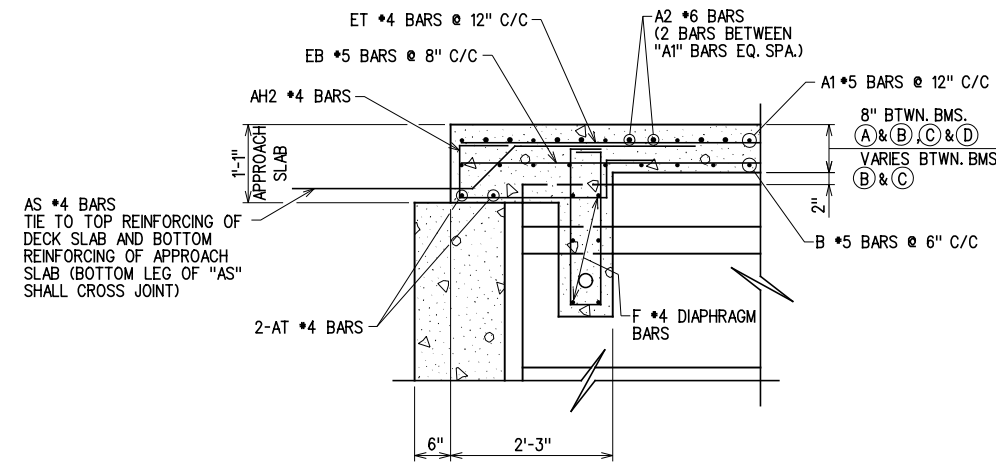


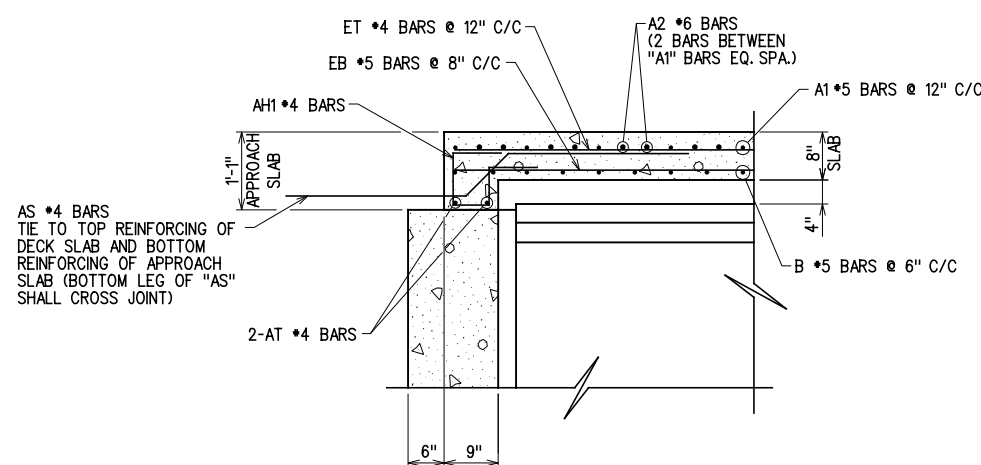
SECTION THRU ABUTMENT AT OVERHANG
(ABUTMENT 1)



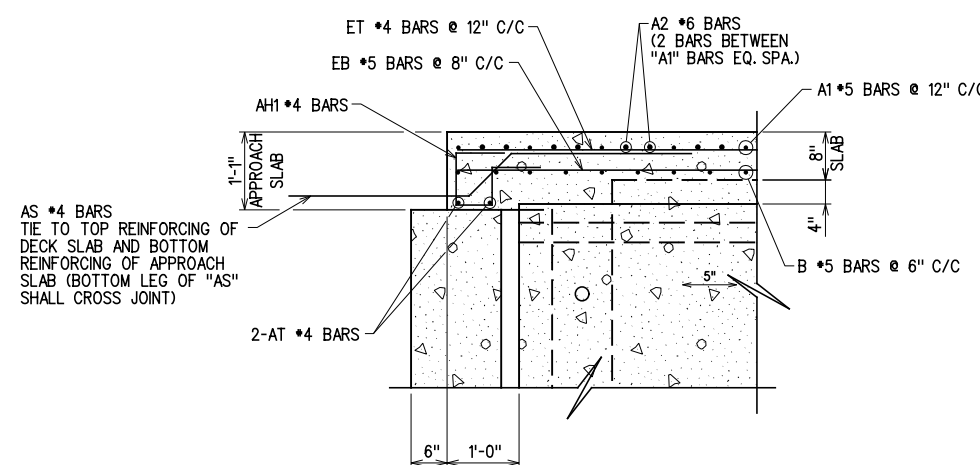
SECTION THRU ABUTMENT AT BEAM
(ABUTMENT 1)



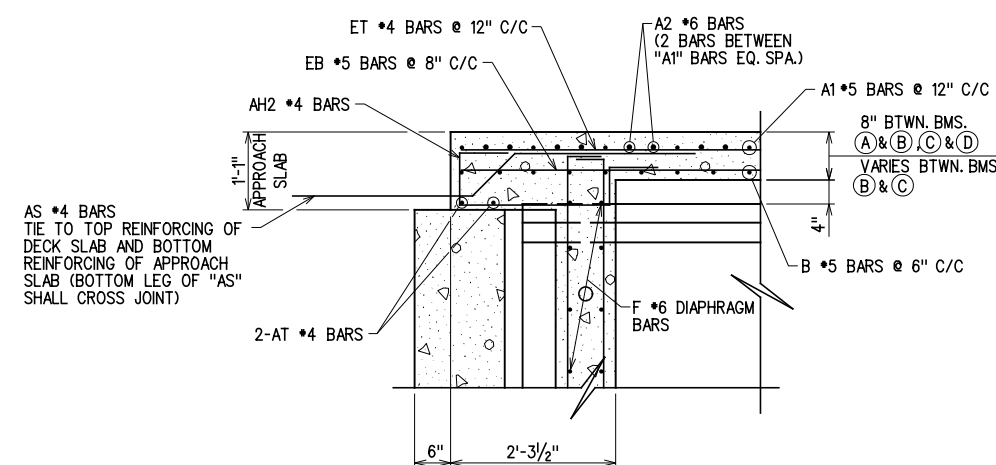
SECTION THRU ABUTMENT BETWEEN BEAMS
(ABUTMENT 1)



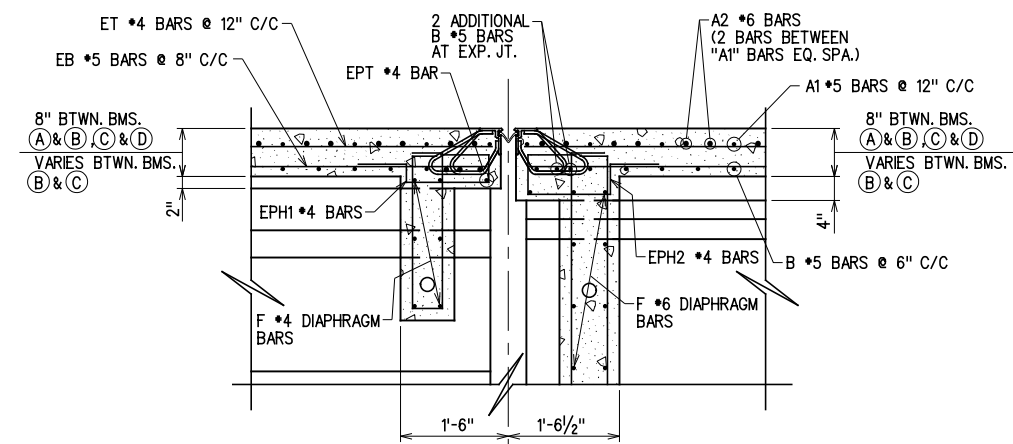
SECTION THRU ABUTMENT AT OVERHANG
(ABUTMENT 2)



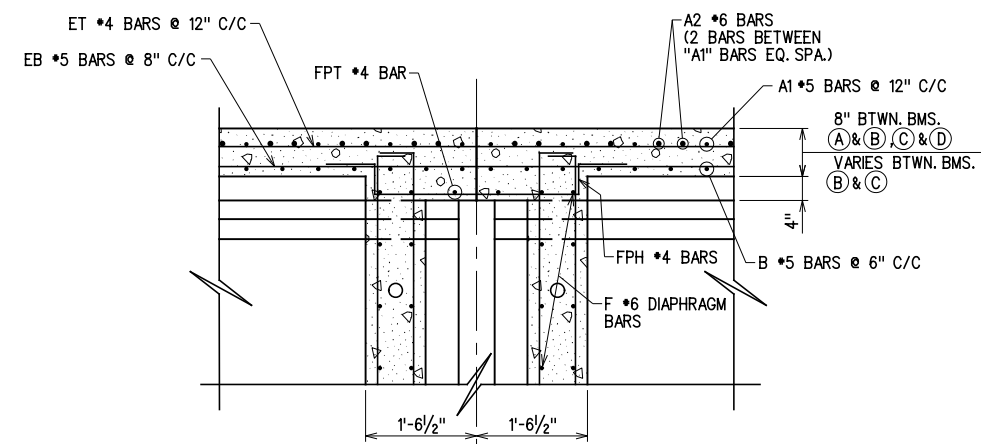
SECTION THRU ABUTMENT AT BEAM
(ABUTMENT 2)



SECTION THRU ABUTMENT BETWEEN BEAMS
(ABUTMENT 2)



SECTION AT EXPANSION PIER
(PIER NO. 1)



SECTION AT FIXED PIER
(PIER NO. 2)

UNDER NO CIRCUMSTANCES SHOULD THE SLAB BE A CONTINUOUS POUR OVER THE FIXED PIER. THIS LOCATION SHALL HAVE A CONSTRUCTION JOINT IN THE SLAB. THE LONGITUDINAL REINFORCING STEEL SHALL BE CONTINUOUS THRU THE CONSTRUCTION JOINT.

X:\Odot\EC-1589B\Struc\Bridge_A\DECK.dgn

3/2/2017

DESIGN		ROCK CRUSHER RD. OVER I-35	MURRAY COUNTY
DRAWN		BRIDGE "A"	
CHECKED		CONCRETE DECK DETAILS	
APPROVED		(2 OF 3)	
SQUAD	G/K ENGR.	JOB PIECE NO. 30363(04)	SHEET NO. 67