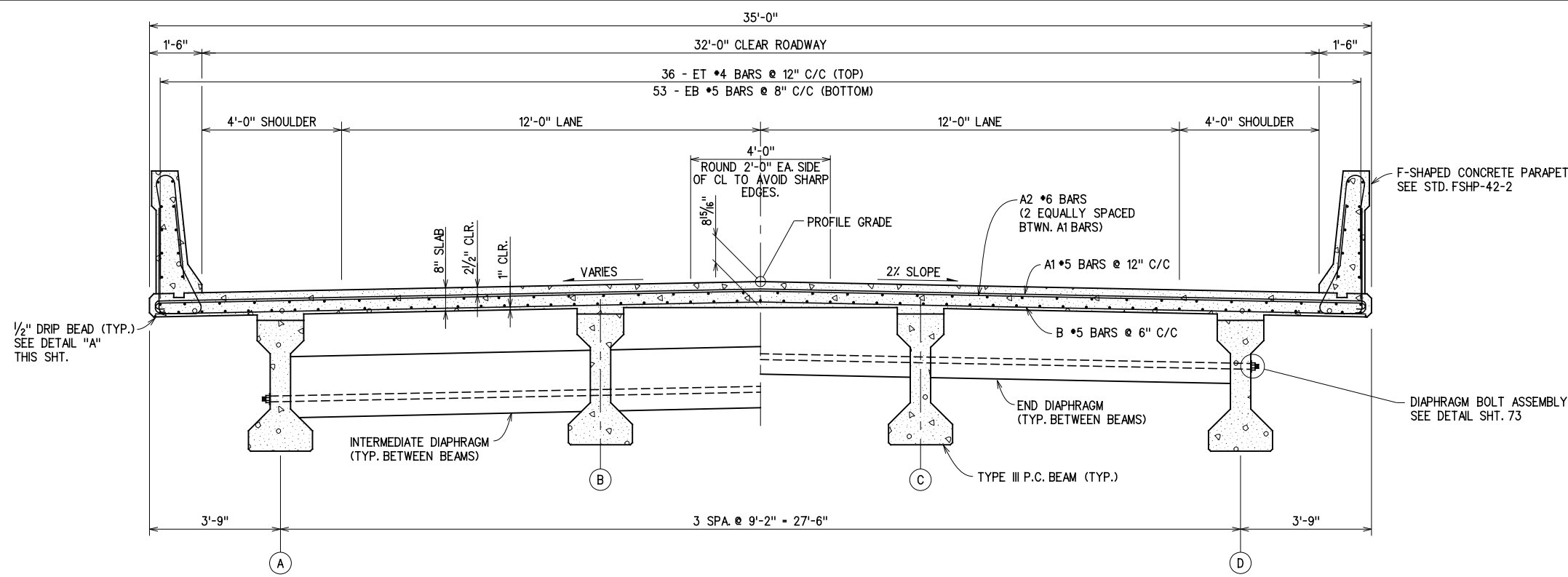


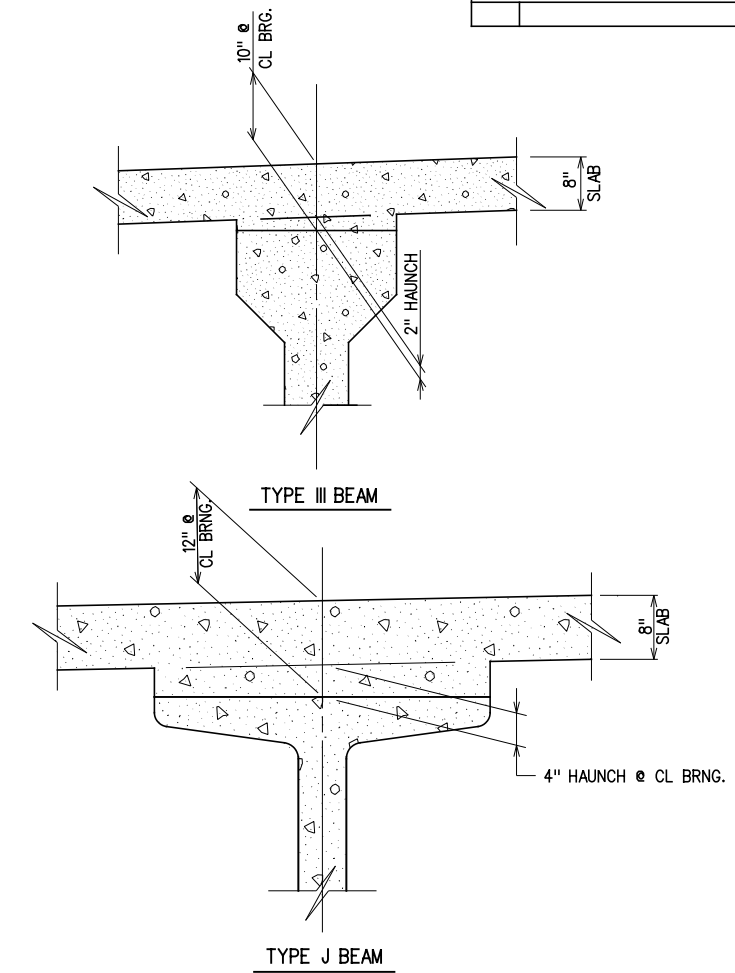
REV. NO.	DESCRIPTION	REVISIONS	DATE



HALF SECTION AT INTERMEDIATE DIAPHRAGM

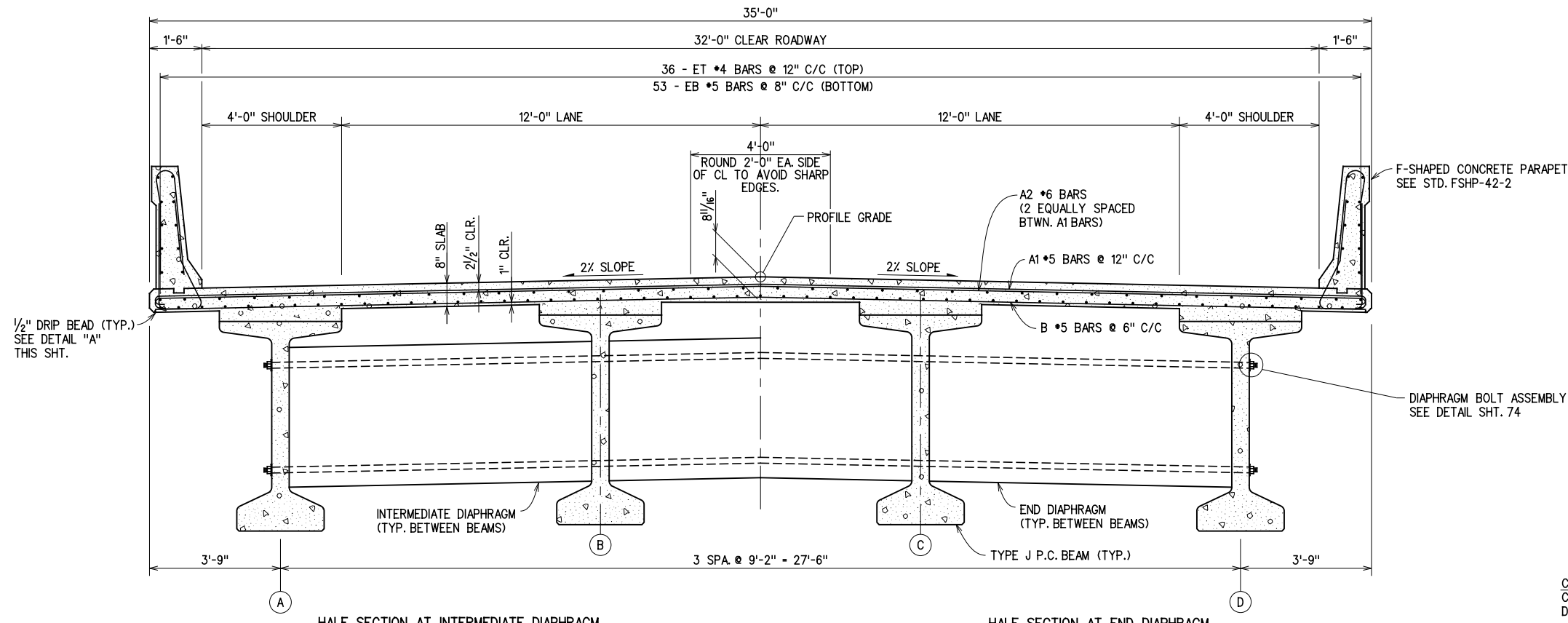
HALF SECTION AT END DIAPHRAGM

TYPICAL SECTION
SPAN 1



BEAM HAUNCH DETAILS

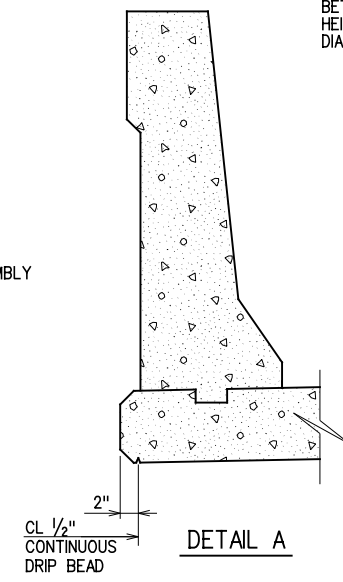
NOTE:
PLAN QUANTITIES FOR "CLASS AA CONCRETE" INCLUDE BEAM HAUNCHES. HAUNCH HEIGHT SHOWN IS THE THEORETICAL HAUNCH HEIGHT AT CENTERLINE BEARING ONLY, MEASURED FROM BOTTOM OF DECK SLAB TO TOP OF BEAM, AND VARIES ACROSS THE SPAN. HAUNCH HEIGHT TO BE DETERMINED AFTER ERECTION OF BEAMS TO PROVIDE FOR BEAM CAMBER, DEAD LOAD DEFLECTION AND GRADE ADJUSTMENT AND SUBMITTED TO THE ENGINEER FOR APPROVAL. THE ENGINEER WILL NOT MEASURE DIFFERENCES BETWEEN THE THEORETICAL AND THE ACTUAL HAUNCH HEIGHTS FOR PAYMENT. SEE SHTS. 69 & 71 FOR DEFLECTION DIAGRAMS.



HALF SECTION AT INTERMEDIATE DIAPHRAGM

HALF SECTION AT END DIAPHRAGM

TYPICAL SECTION
SPANS 2 & 3



DETAIL A

X:\Odot\EC-1589B\Struc\Bridge_A\TYP.dgn
3/2/2017

DESIGN		ROCK CRUSHER ROAD OVER I-35	MURRAY COUNTY
DRAWN		BRIDGE "A"	
CHECKED		TYPICAL SECTION	
APPROVED			
SQUAD	G/K ENGR.	JOB PIECE NO. 30363(04)	SHEET NO. 62