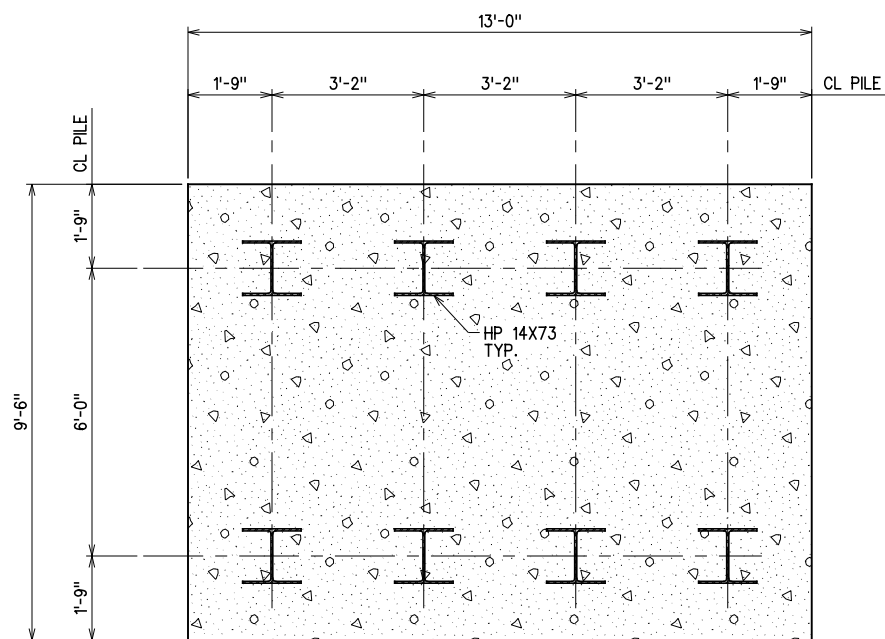
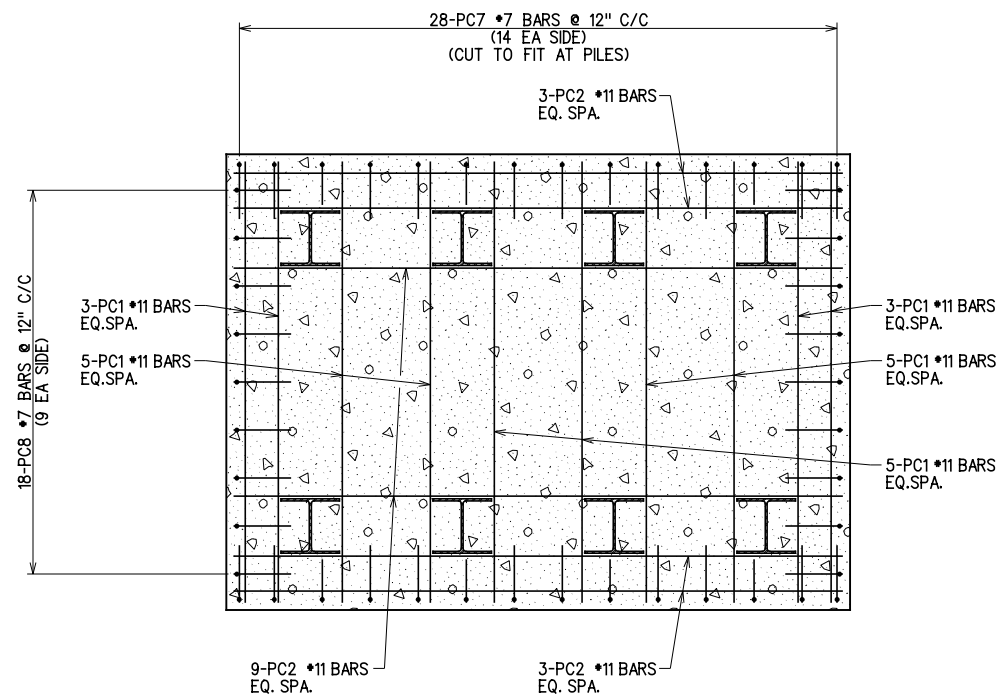


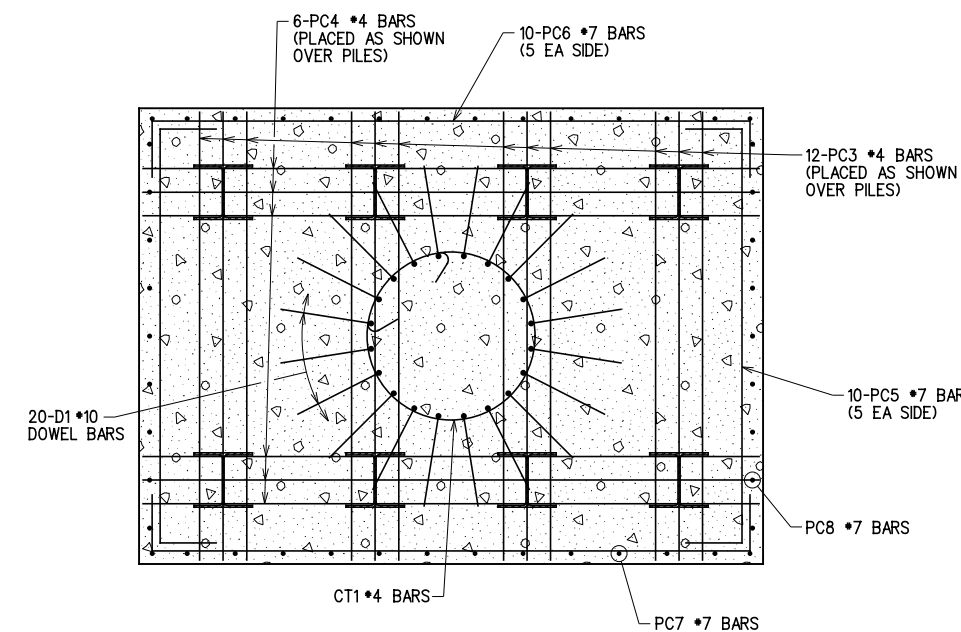
REV. NO.	DESCRIPTION	REVISIONS	DATE



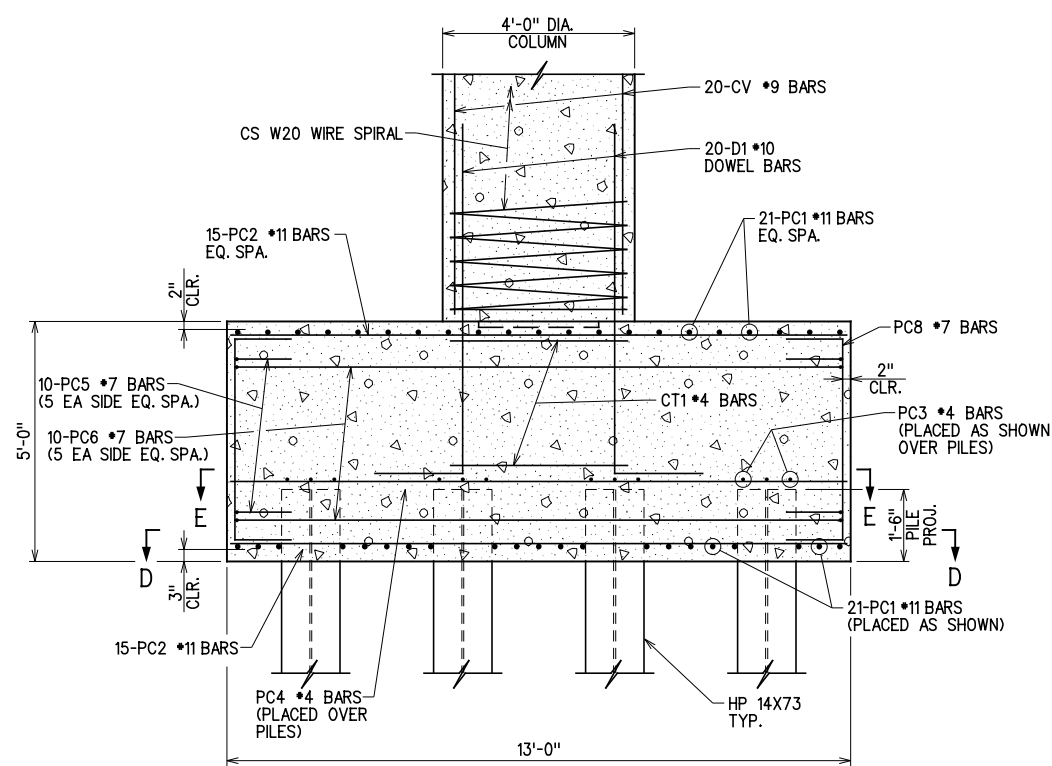
PILE SPACING



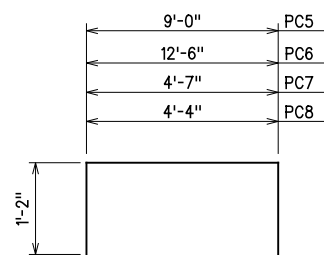
SECTION D-D



SECTION E-E

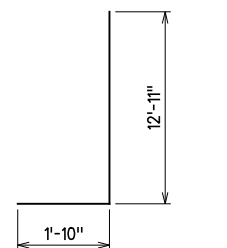


PILE CAP DETAIL

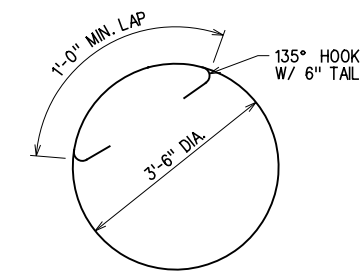


- PC5 - #7 BAR x 11'-4"
- PC6 - #7 BAR x 14'-10"
- PC7 - #7 BAR x 6'-11"
- PC8 - #7 BAR x 6'-8"

BAR BENDING DIAGRAMS
(ALL DIMENSIONS ARE OUT TO OUT)



- D1 - #10 BAR x 14'-9"



- CT1 - #4 BAR x 13'-0"

X:\Odot\EC-1589B\Struc\Bridge_A\PIERDET.dgn

3/2/2017

DESIGN		ROCK CRUSHER RD. OVER I-35	MURRAY COUNTY
DRAWN		BRIDGE "A"	
CHECKED		PIER DETAILS (4 OF 4)	
APPROVED			
SQUAD	G/K ENGR.	JOB PIECE NO. 30363(04)	SHEET NO. 60