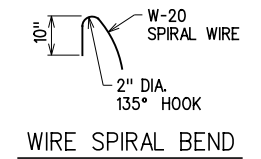
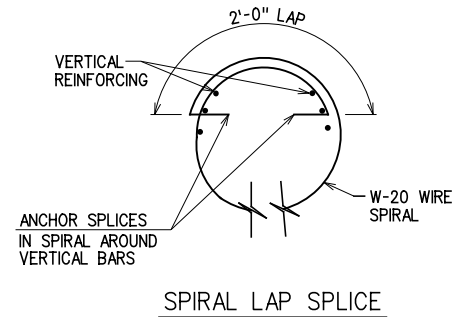
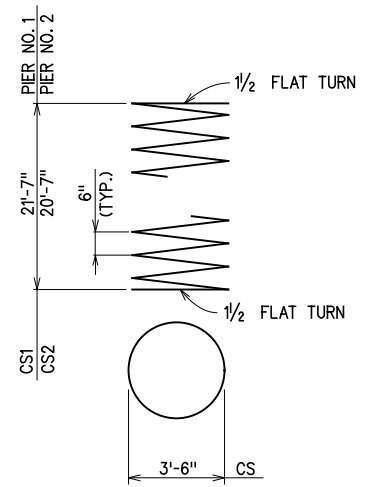
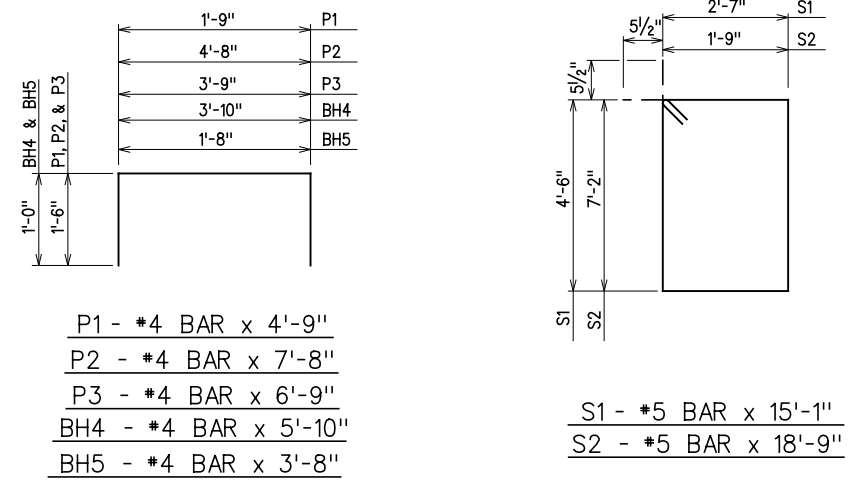
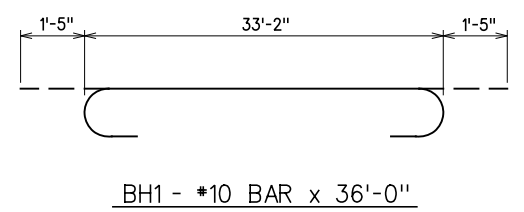


REV. NO.	DESCRIPTION	REVISIONS	DATE



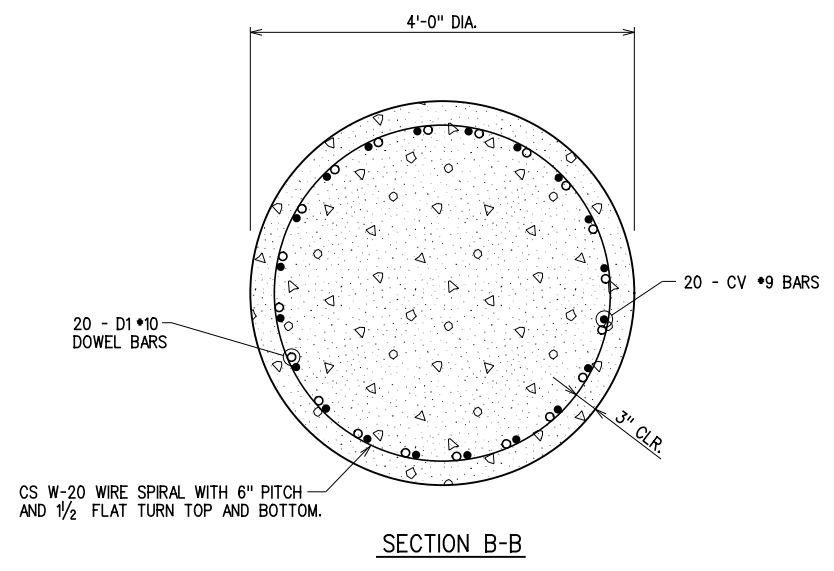
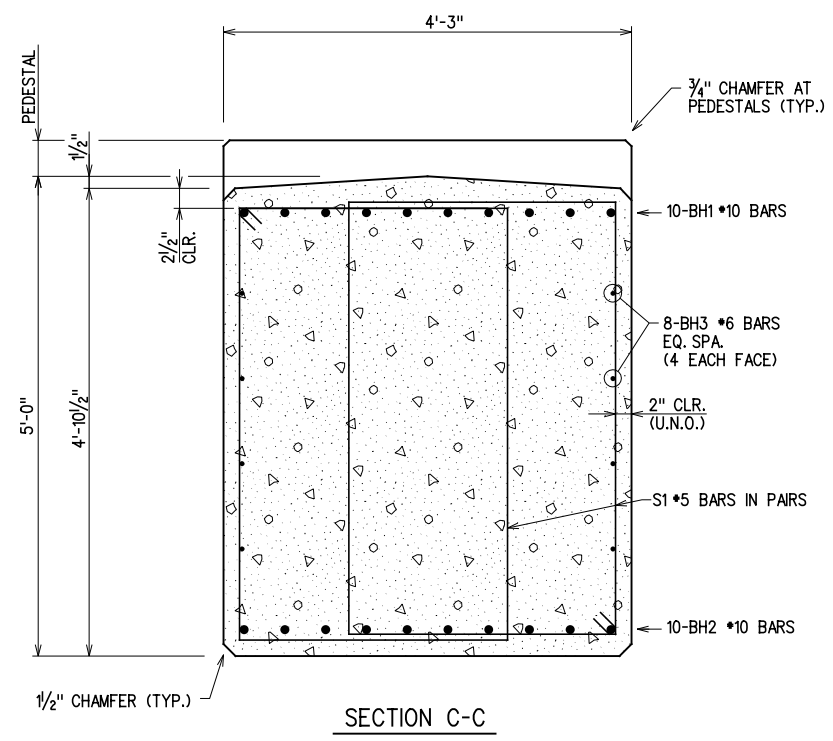
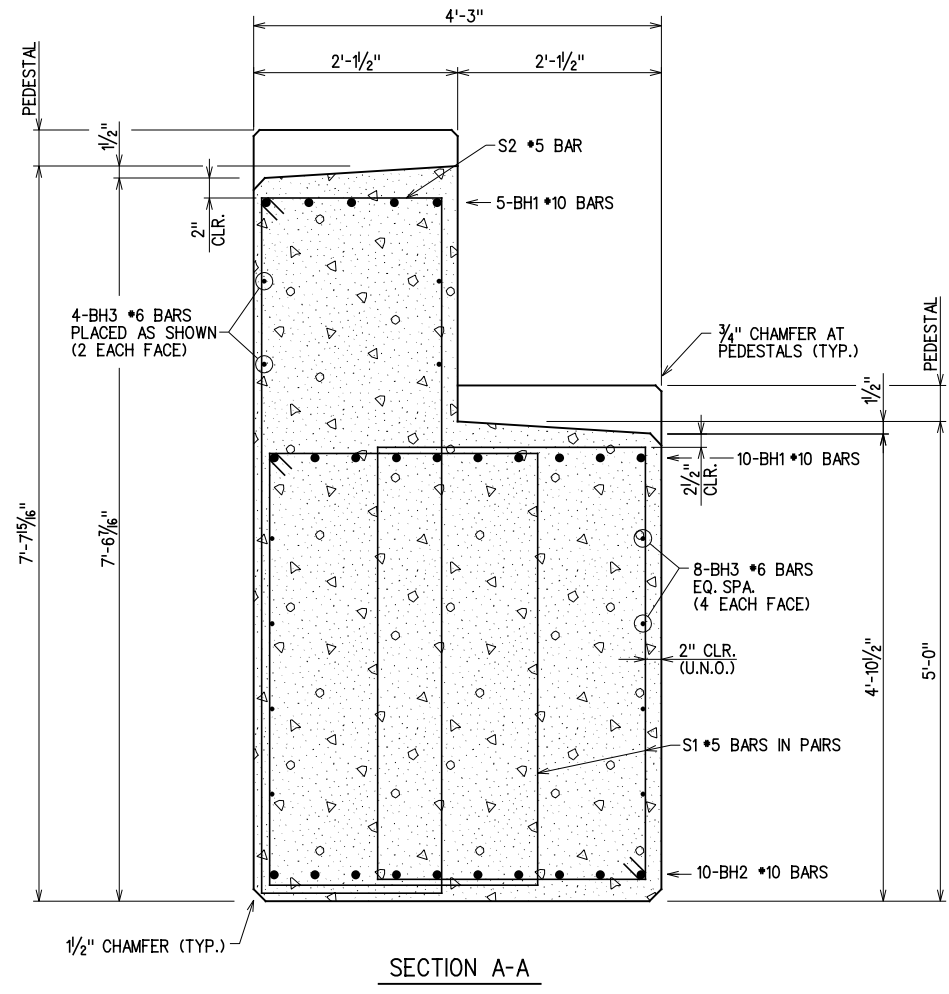
NOTE:
 SPIRAL BARS SHALL CONFORM TO AASHTO M32. SPIRAL BAR LENGTH DOES NOT INCLUDE LAP. IF LAP IS REQUIRED, THE LENGTH OF THE LAP SHALL BE AS SHOWN.



BAR BENDING DIAGRAMS
 (ALL DIMENSIONS ARE OUT TO OUT)

NOTES:

- ALL PIER CAP EXPOSED EDGES SHALL BE CHAMFERED 1/2". ALL PEDESTAL EDGES SHALL BE CHAMFERED 3/4".
- CONCRETE SURFACE UNDER SUPERSTRUCTURE BEAMS SHALL BE GROUND WITH A CARBORUNDUM BRICK BEFORE PLACEMENT OF BEARING PAD TO SECURE FULL BEARING ON CONCRETE.
- PIER CONCRETE SHALL BE CLASS "A" HAVING A 28 DAY STRENGTH OF 3,000 psi.



DESIGN		ROCK CRUSHER RD. OVER I-35	MURRAY COUNTY
DRAWN		BRIDGE "A"	
CHECKED		PIER DETAILS (3 OF 4)	
APPROVED			
SQUAD	G/K ENGR.	JOB PIECE NO. 30363(04)	SHEET NO. 59

X:\Odot\EC-1589B\Struc\Bridge_A\PIERDET.dgn
 3/2/2017