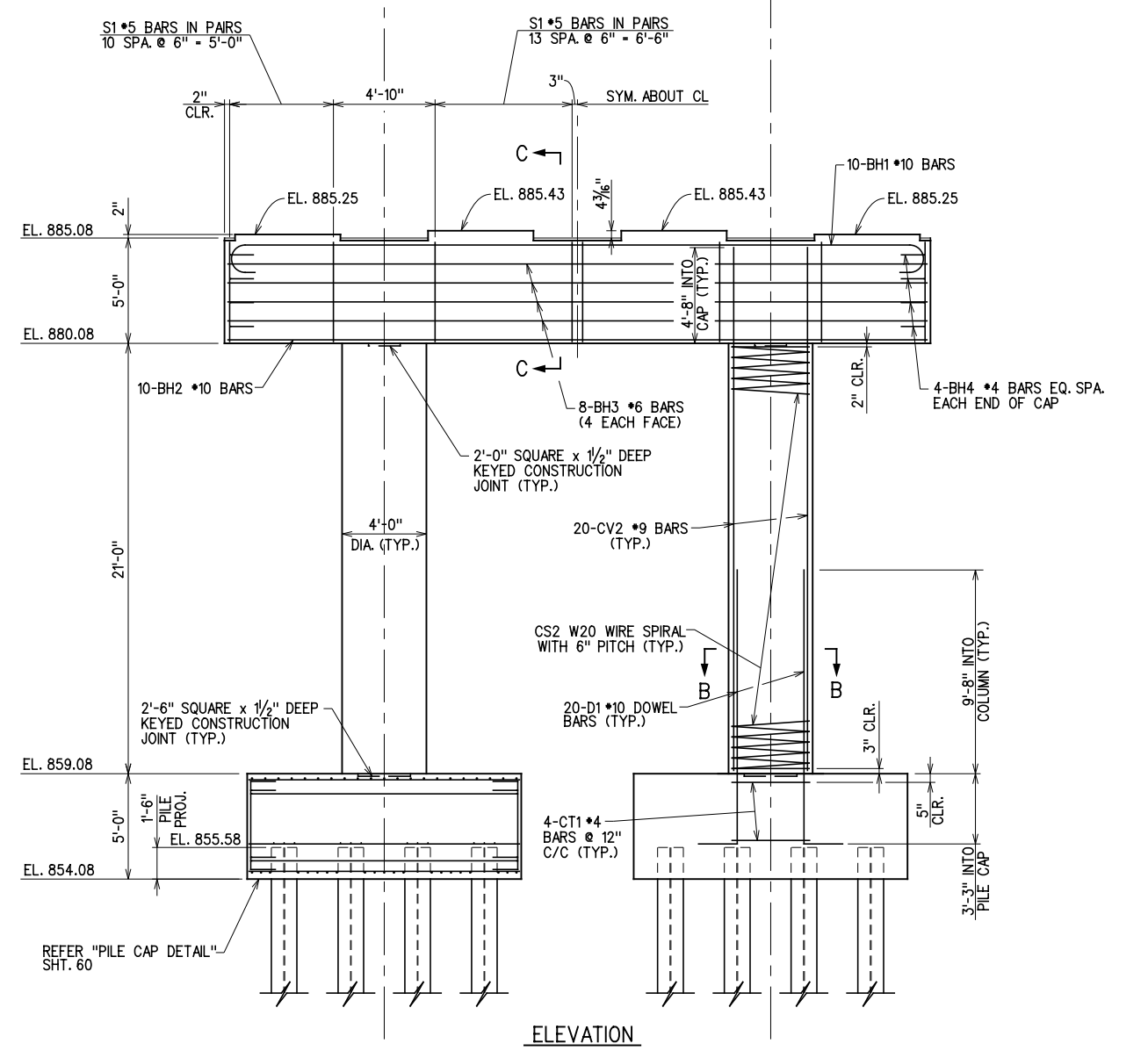
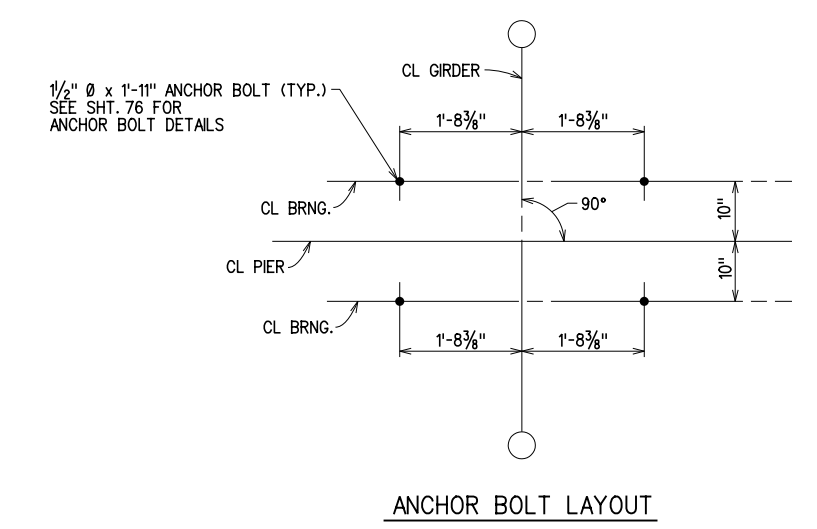
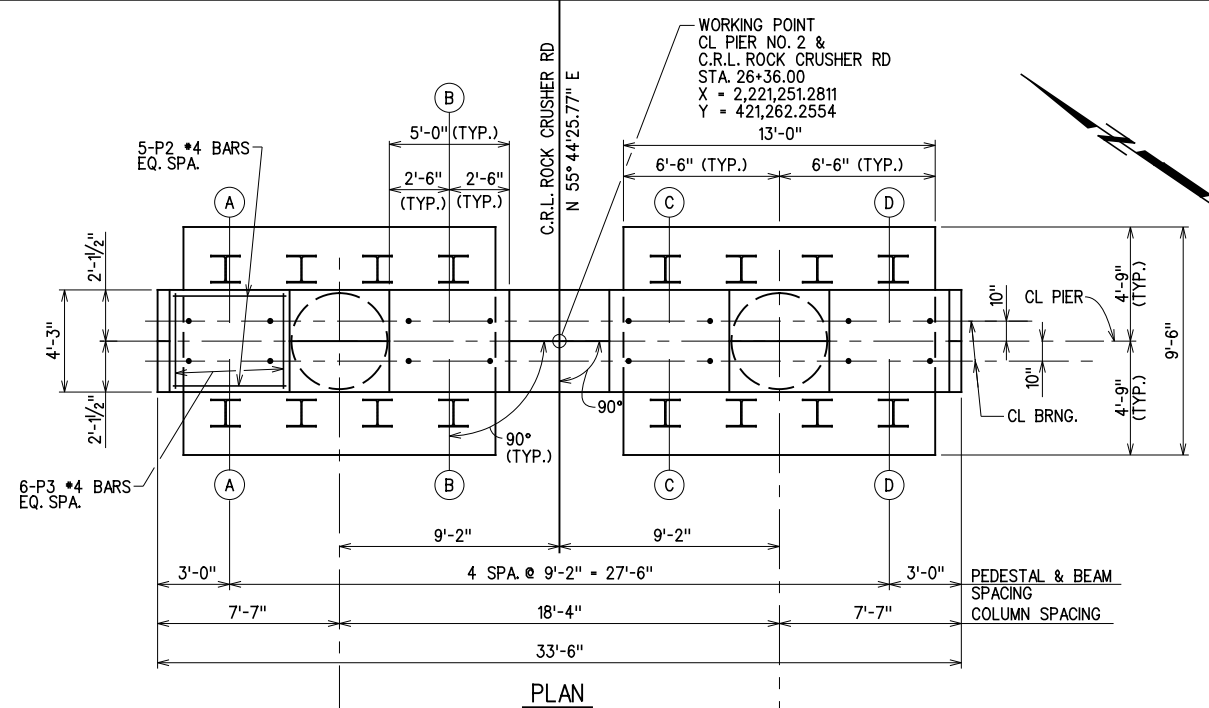


REVISIONS		
REV. NO.	DESCRIPTION	DATE



BAR LIST PIER NO. 2				
EPOXY COATED REINFORCING				
MARK	NO.	SIZE	FORM	LENGTH
BH1	10	#10	BNT.	36'-0"
BH2	10	#10	STR.	33'-2"
BH3	8	#6	STR.	33'-2"
BH4	8	#4	BNT.	5'-10"
P2	20	#4	BNT.	7'-8"
P3	24	#4	BNT.	6'-9"
S1	100	#5	BNT.	15'-1"
CV2	40	#9	STR.	25'-5"
D1	40	#10	BNT.	14'-9"
PLAIN REINFORCING				
CS2	2	W20	SPIR.	486'-0"
CT1	8	#4	BNT.	13'-0"
PC1	84	#11	STR.	9'-2"
PC2	60	#11	STR.	12'-8"
PC3	24	#4	STR.	9'-2"
PC4	12	#4	STR.	12'-8"
PC5	20	#7	BNT.	11'-4"
PC6	20	#7	BNT.	14'-10"
PC7	56	#7	BNT.	6'-11"
PC8	36	#7	BNT.	6'-8"

- NOTES:
- FOR BAR BENDING DIAGRAM SEE SHT. 59.
 - FOR SECTIONS SEE SHT. 59.
 - FOR QUANTITIES SEE SHT. 57.

PIER NO. 2			
DESIGN		ROCK CRUSHER RD. OVER I-35	MURRAY COUNTY
DRAWN		BRIDGE "A"	PIER DETAILS (2 OF 4)
CHECKED			
APPROVED			
SQUAD	G/K ENGR.	JOB PIECE NO. 30363(04)	SHEET NO. 58

X:\Odot\EC-1589B\Struc\Bridge_A\Pier 2.dgn

3/2/2017