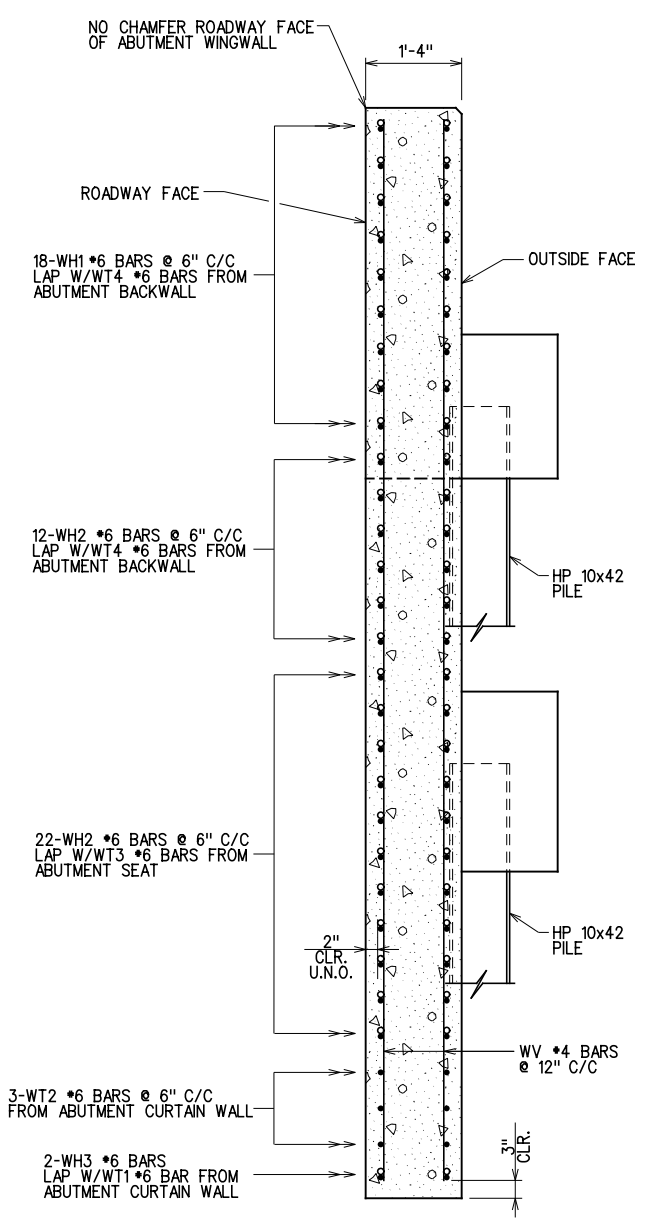
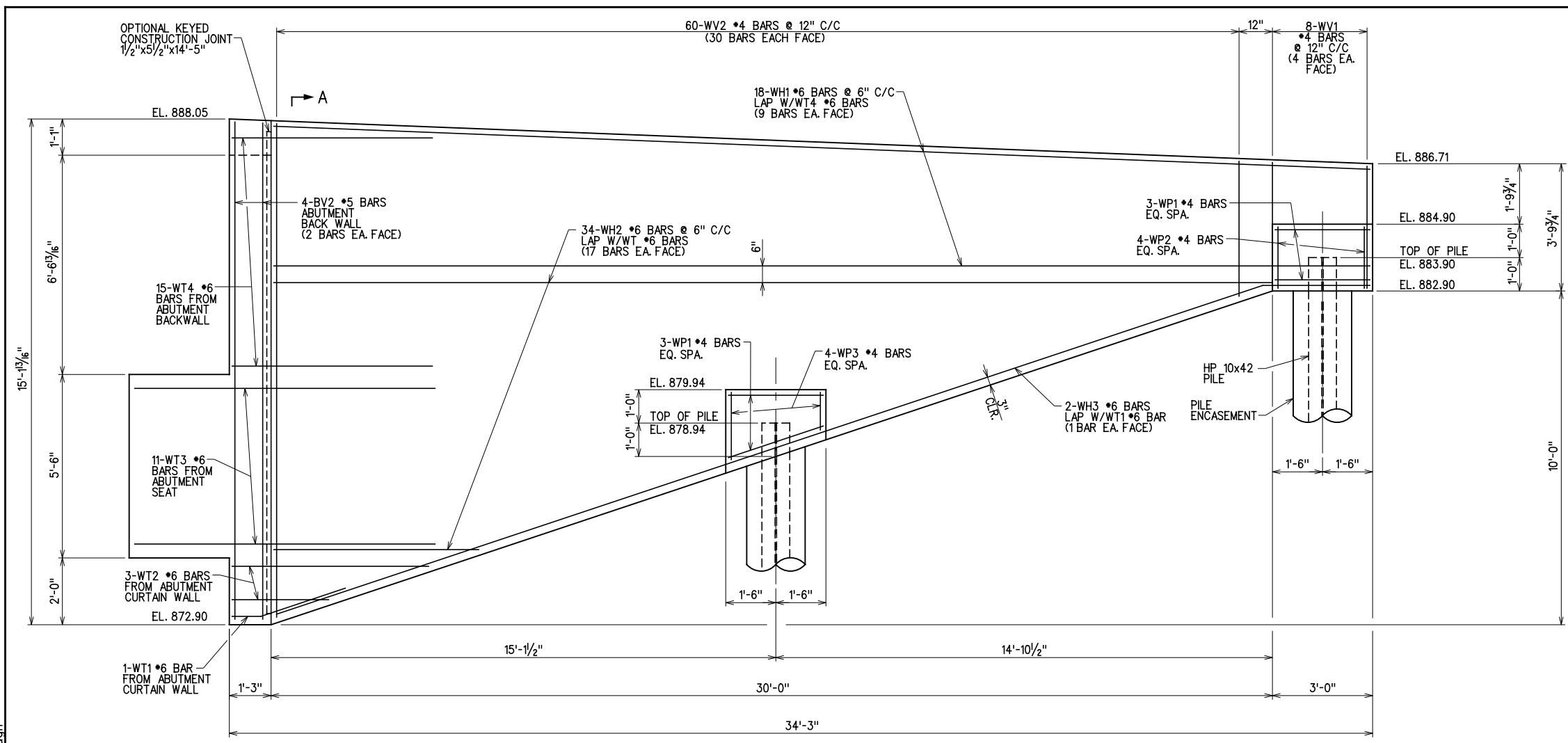


REV. NO.	DESCRIPTION	DATE

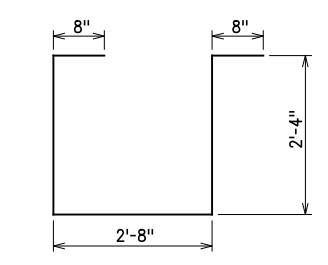


ABUTMENT NO. 2 - WING

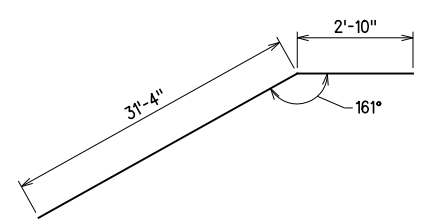
ABUTMENT WING BAR LIST
ONE SHOWN, TWO REQUIRED

MARK	NO.	SIZE	FORM	LENGTH	LENGTH VARIATION
EPOXY COATED REINFORCING					
	WH1	18 #6	STR.	32'-8"	
①	WH2	34 #6	STR.	17'-9" (AVG.)	5'-9" TO 29'-9"
	WH3	2 #6	BNT.	34'-2"	
	WV1	8 #4	STR.	3'-4"	
②	WV2	60 #4	STR.	9'-2 1/2" (AVG.)	3'-10" TO 14'-7"
	WP1	6 #4	BNT.	8'-8"	
	WP2	4 #4	STR.	1'-7"	
	WP3	4 #4	STR.	1'-6 1/2"	1'-1" TO 2'-0"

- ① 2 SETS OF 17 BARS
- ② 2 SETS OF 30 BARS



WP1 - #4 BAR x 8'-8"



WH3 - #6 BAR x 34'-2"

BAR BENDING DIAGRAMS
(ALL DIMENSIONS ARE OUT TO OUT)

SECTION A-A

X:\Odot\EC-1589B\Struc\Bridge_A\ABUT2-3.dgn 3/2/2017

DESIGN		DRAWN		CHECKED		APPROVED		SQUAD	
								G/K ENGR.	

ABUTMENT NO. 2

ROCK CRUSHER RD. OVER I-35
BRIDGE "A" MURRAY COUNTY

ABUTMENT DETAILS
(8 OF 8)

JOB PIECE NO. 30363(04) SHEET NO. 55