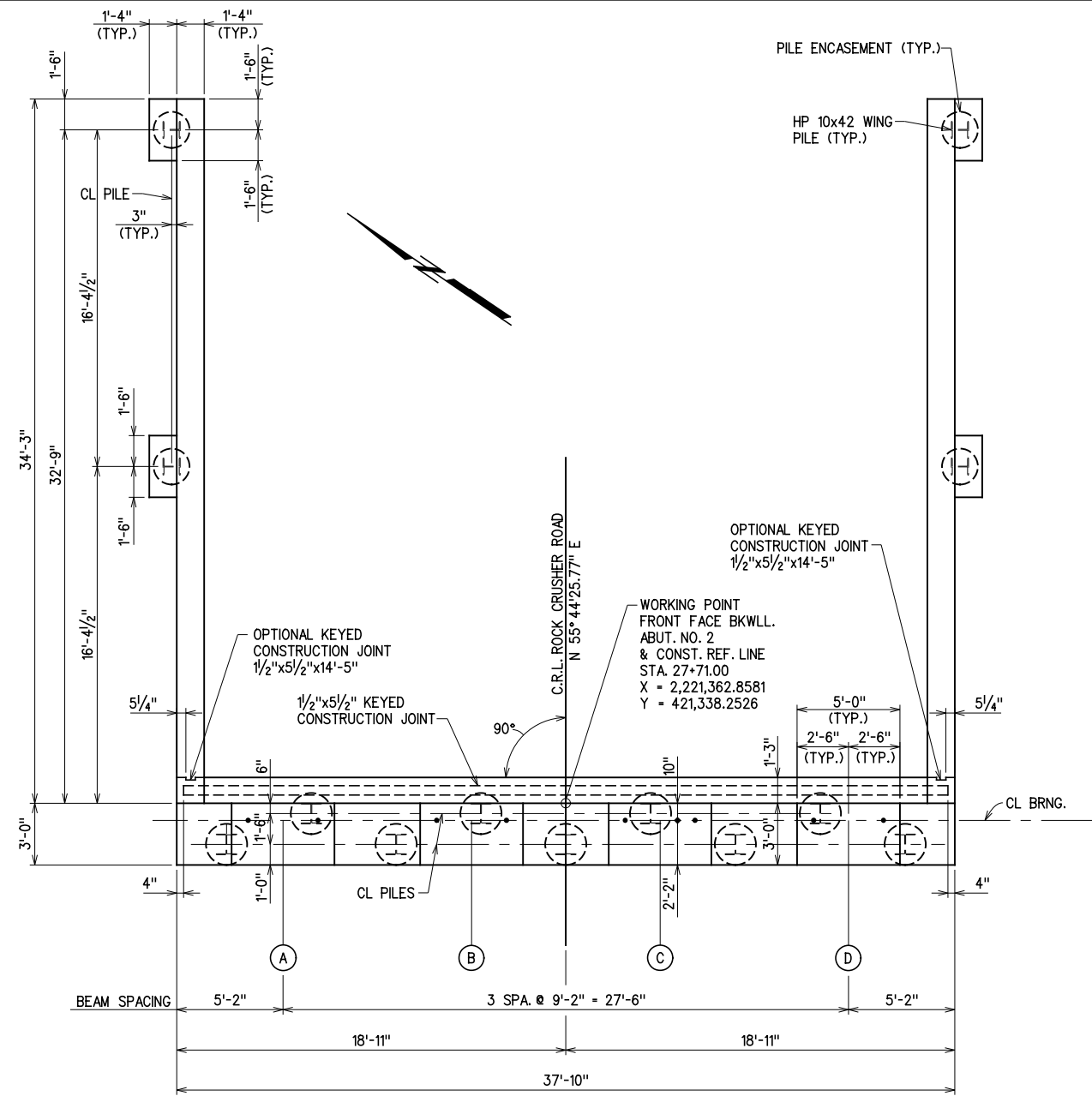
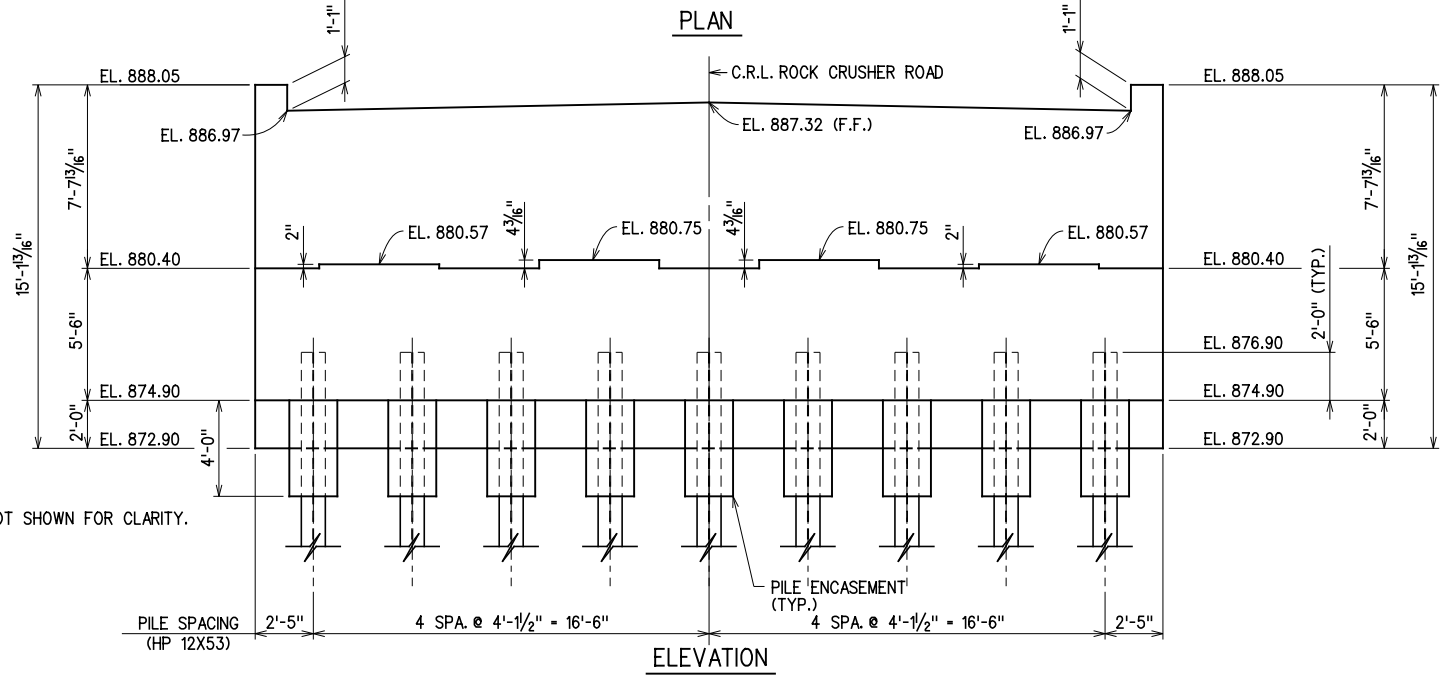


REV. NO.	DESCRIPTION	REVISIONS	DATE



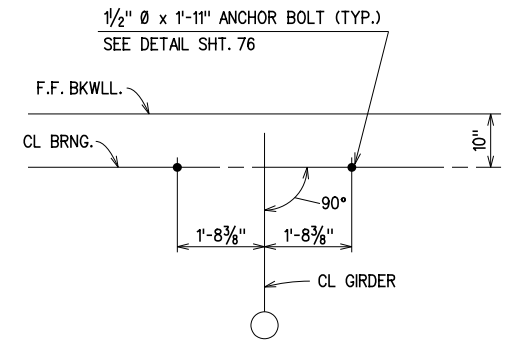
PLAN



ELEVATION

NOTE:
WING PILES NOT SHOWN FOR CLARITY.

- NOTES:
1. FOR WINGWALL ELEVATIONS, SEE SHT. 53
 2. FOR ABUTMENT EXCAVATION DIAGRAM, SEE SHT. 56
 3. FOR LOCATION OF PERF. PIPE UNDERDRAIN, SEE SHT. 56
 4. FOR SLAB DETAILS AT ABUT. BKWLL., SEE SHT. 67
 5. FOR BAR LIST, SEE SHT. 54
 6. FOR PEDESTAL DETAILS, SEE SHT. 53.
 7. ALL EXPOSED EDGES SHALL BE CHAMFERED $\frac{3}{4}$ " UNLESS SHOWN OR NOTED OTHERWISE.
 8. SEE STANDARD HP1-2 FOR PILE ENCASUREMENT DETAILS.



ANCHOR BOLT LAYOUT

X:\Odot\EC-1589B\Struc\Bridge_A\ABUT2-1.dgn 3/2/2017

DESIGN		ABUTMENT NO. 2	
DESIGN		ROCK CRUSHER RD. OVER I-35	MURRAY COUNTY
DRAWN		BRIDGE "A"	
CHECKED		ABUTMENT DETAILS	
APPROVED		(5 OF 8)	
SQUAD	G/K ENGR.	JOB PIECE NO. 30363(04)	SHEET NO. 52