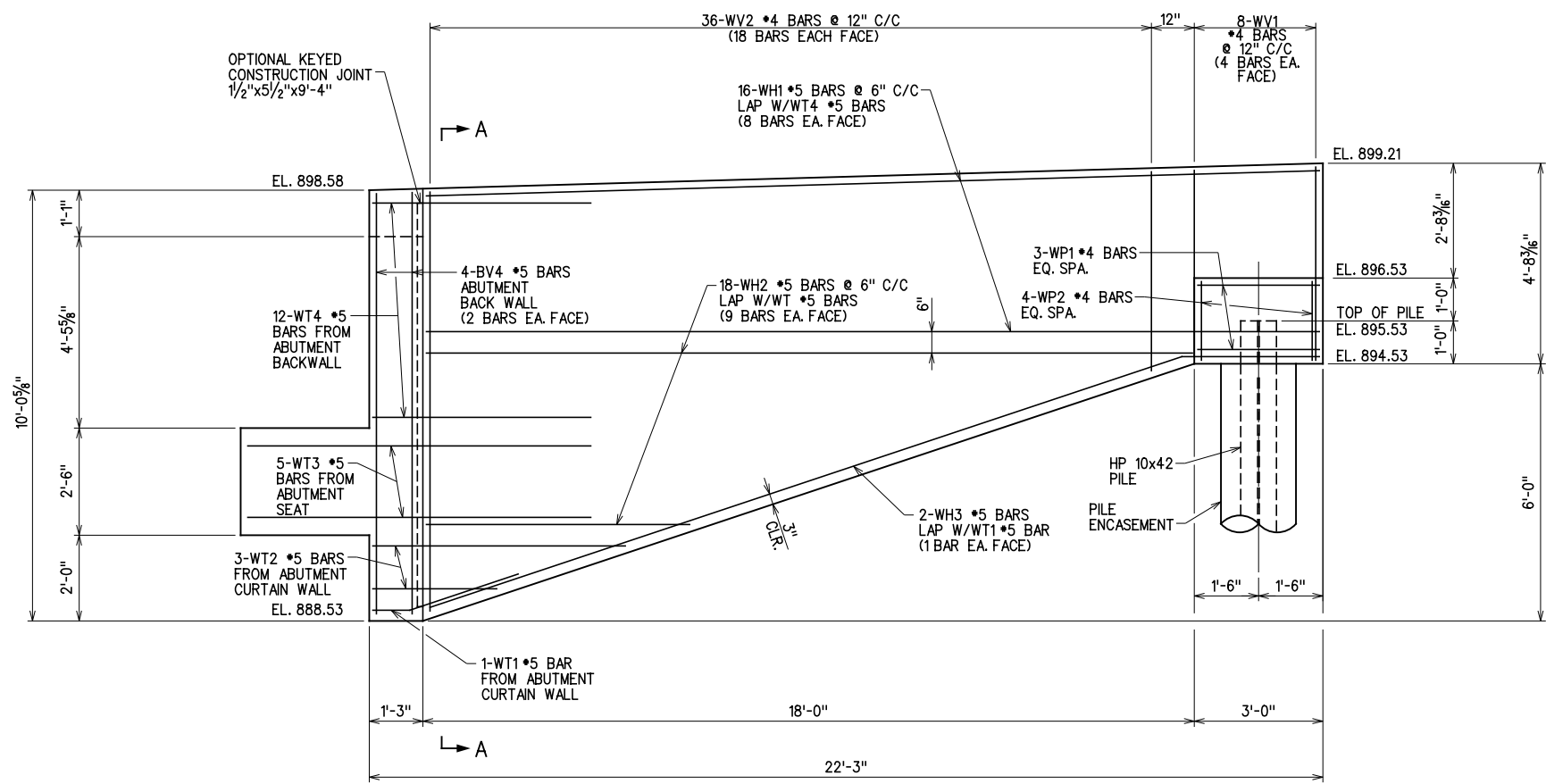
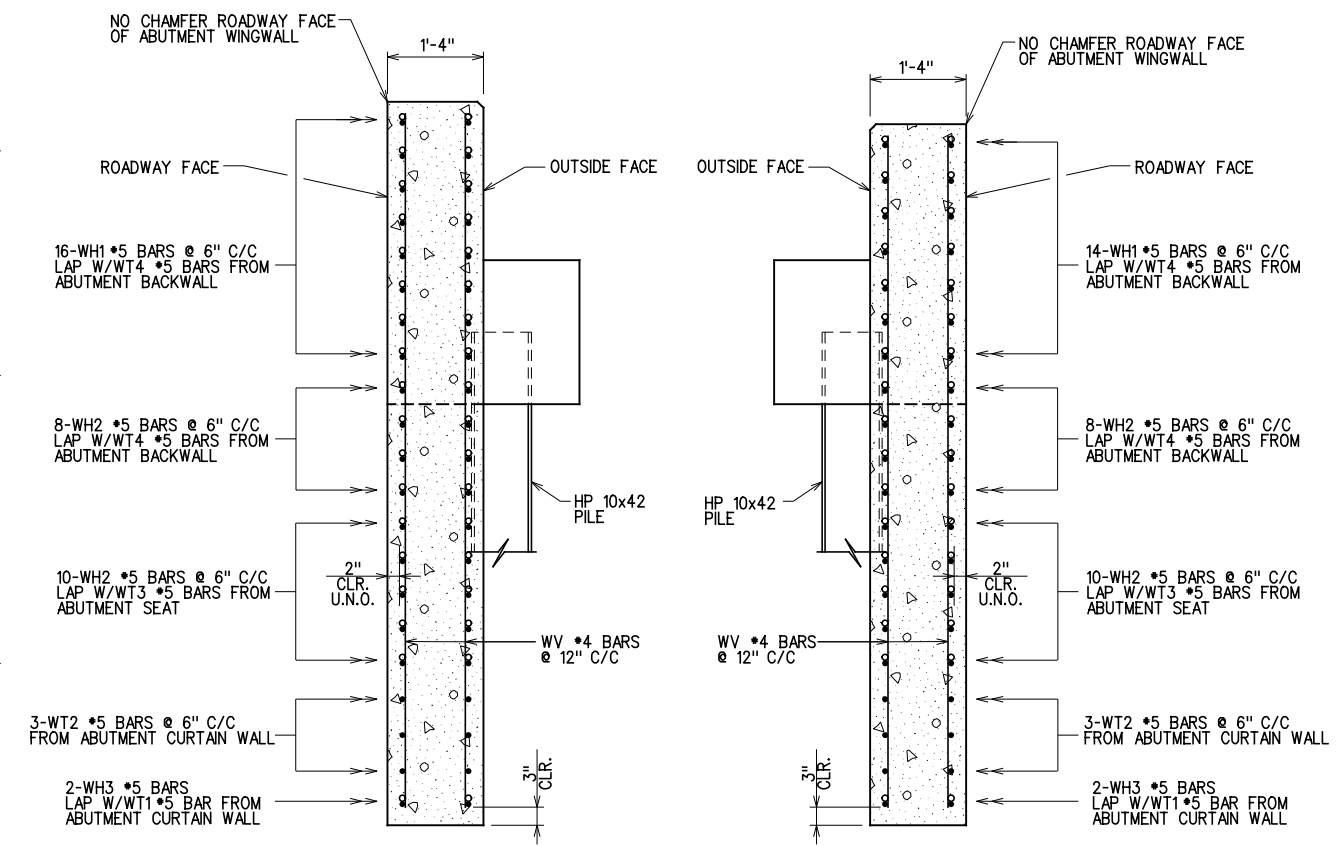


REV. NO.	DESCRIPTION	DATE

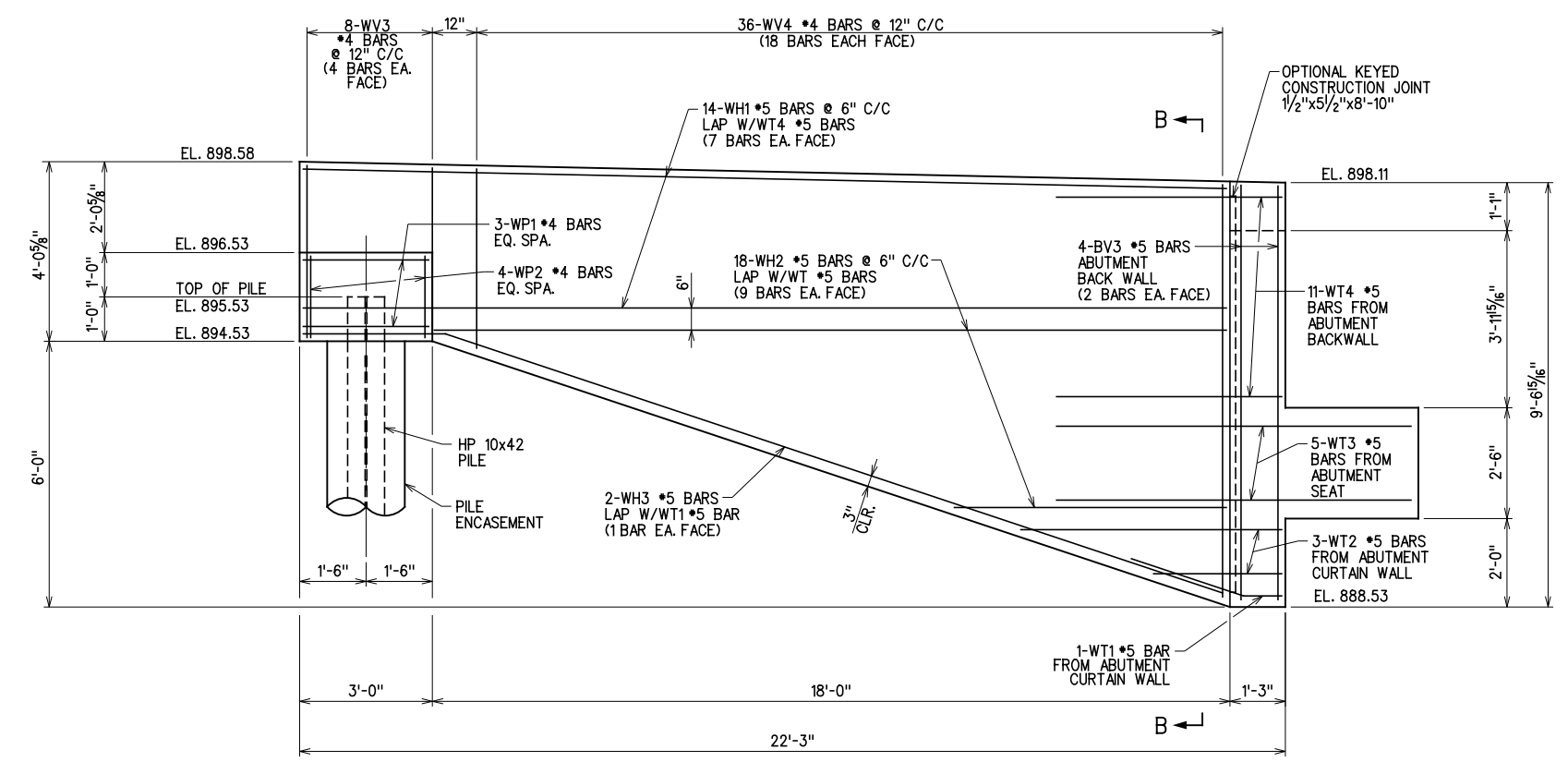


ABUTMENT NO. 1 - NORTHWEST WING



SECTION A-A

SECTION B-B



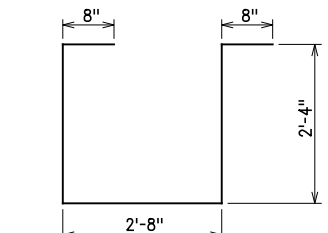
ABUTMENT NO. 1 - SOUTHEAST WING

ABUTMENT WING BAR LIST					
NORTHWEST WING					
MARK	NO.	SIZE	FORM	LENGTH	LENGTH VARIATION
EPOXY COATED REINFORCING					
WH1	16	#5	STR.	20'-8"	
WH2	18	#5	STR.	11'-9" (AVG.)	5'-9" TO 17'-9"
WH3	2	#5	BNT.	21'-7"	
WV1	8	#4	STR.	4'-2"	
WV2	36	#4	STR.	7'-0" (AVG.)	4'-5" TO 9'-7"
WP1	3	#4	BNT.	8'-8"	
WP2	4	#4	STR.	1'-7"	

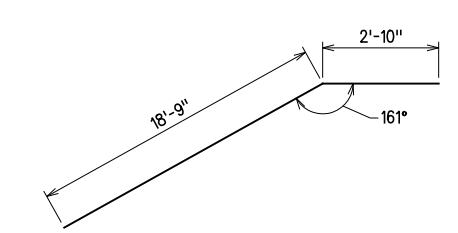
- ① 2 SETS OF 9 BARS
- ② 2 SETS OF 18 BARS

ABUTMENT WING BAR LIST					
SOUTHEAST WING					
MARK	NO.	SIZE	FORM	LENGTH	LENGTH VARIATION
EPOXY COATED REINFORCING					
WH1	14	#5	STR.	20'-8"	
WH2	18	#5	STR.	11'-9" (AVG.)	5'-9" TO 17'-9"
WH3	2	#5	BNT.	21'-7"	
WV3	8	#4	STR.	3'-6"	
WV4	36	#4	STR.	6'-5/2" (AVG.)	3'-10" TO 9'-1"
WP1	3	#4	BNT.	8'-8"	
WP2	4	#4	STR.	1'-7"	

- ① 2 SETS OF 9 BARS
- ② 2 SETS OF 18 BARS



WP1 - #4 BAR x 8'-8"



WH3 - #5 BAR x 21'-7"

BAR BENDING DIAGRAMS
(ALL DIMENSIONS ARE OUT TO OUT)

ABUTMENT NO. 1			
DESIGN		ROCK CRUSHER RD. OVER I-35	MURRAY COUNTY
DRAWN		BRIDGE "A"	
CHECKED			
APPROVED			
SQUAD	G/K ENGR.	JOB PIECE NO. 30363(04)	SHEET NO. 51

ABUTMENT DETAILS
(4 OF 8)

X:\Odot\EC-1589B\Struc\Bridge_A\ABUT1-3.dgn 3/2/2017