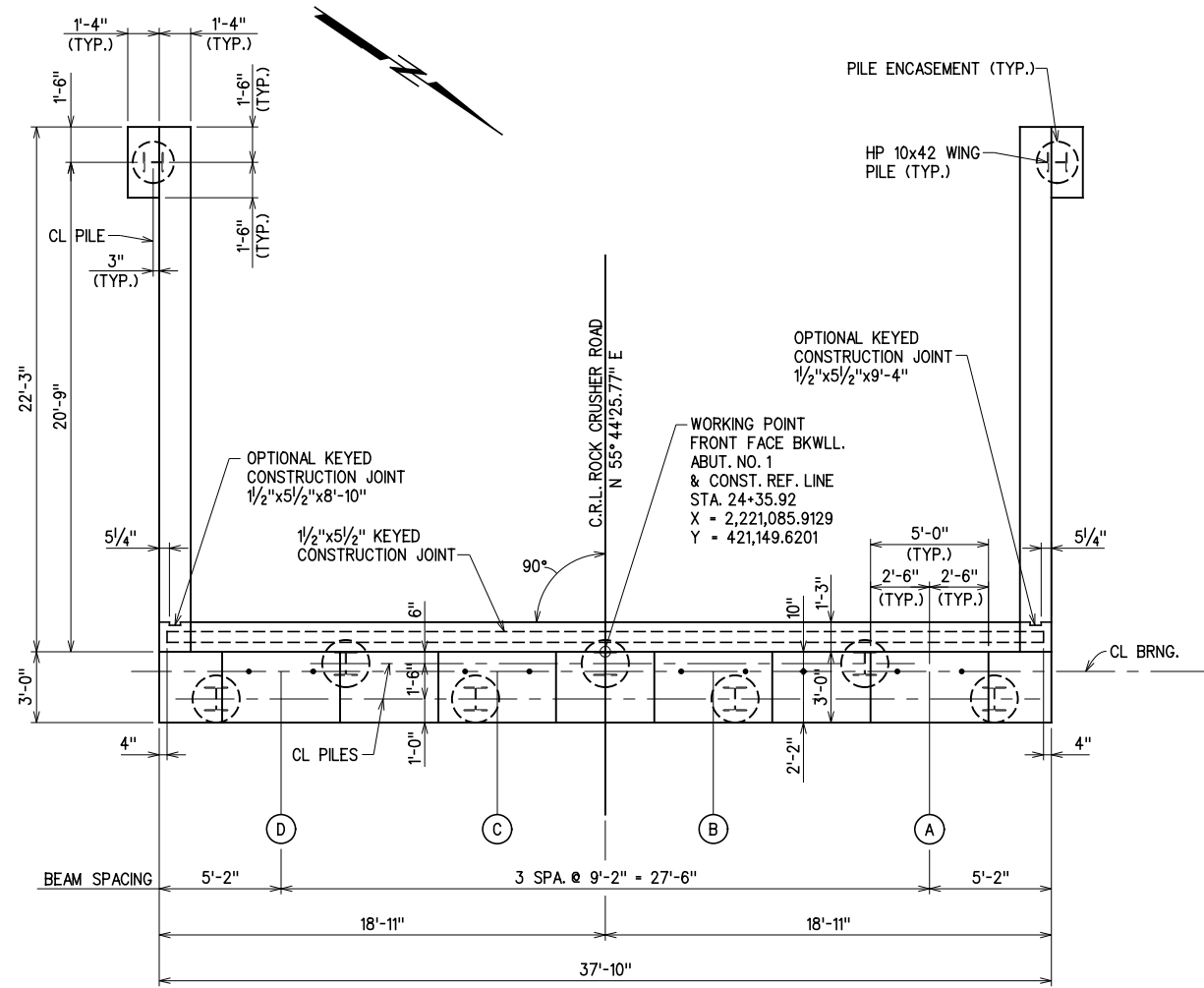
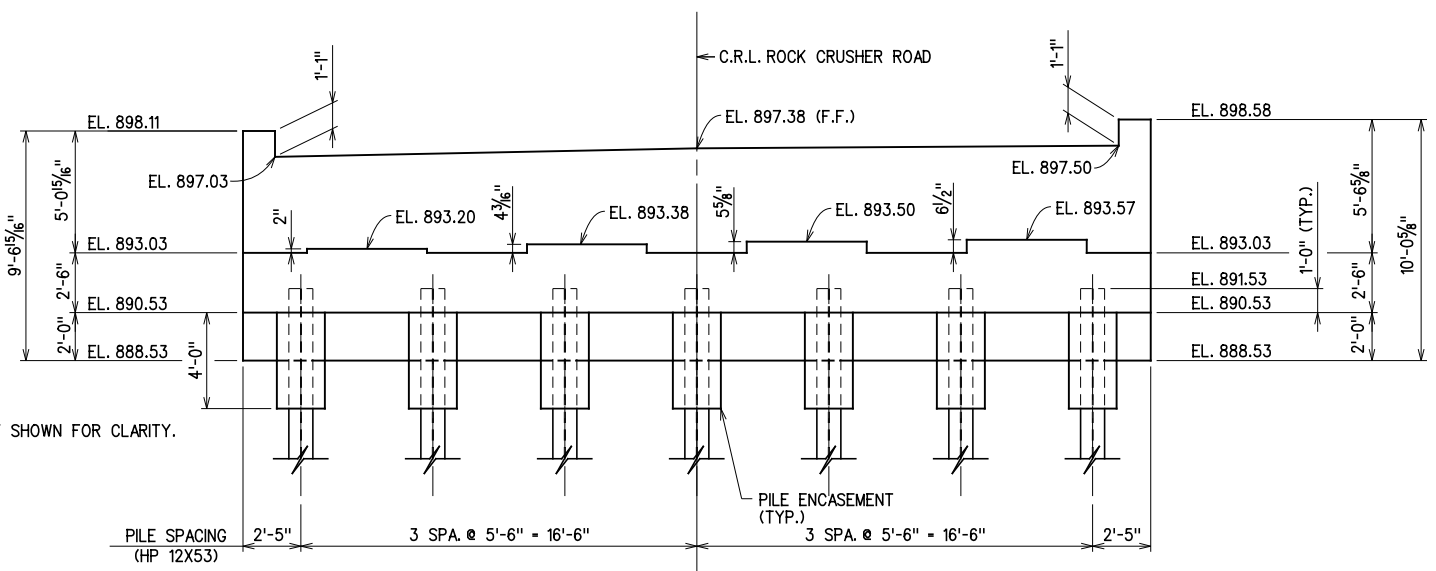


REV. NO.	DESCRIPTION	REVISIONS	DATE



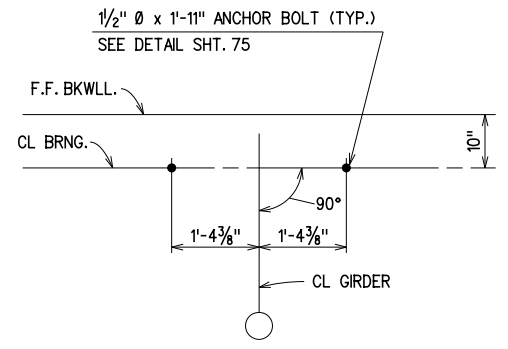
PLAN



ELEVATION

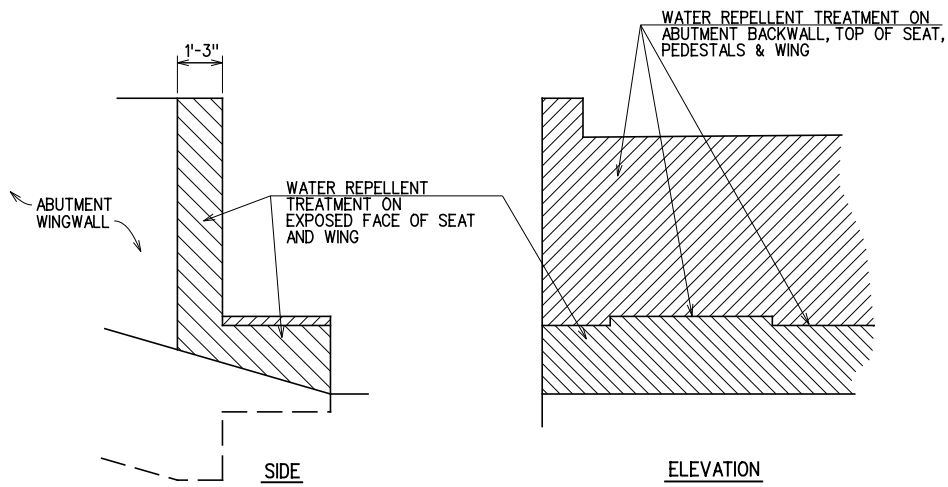
NOTE:
WING PILES NOT SHOWN FOR CLARITY.

ABUTMENT QUANTITIES				
ITEM	UNIT	ABUT. 1	ABUT. 2	TOTAL
SUBSTRUCTURE EXCAVATION COMMON	C.Y.	89.0	117.0	206.0
CLSM BACKFILL	C.Y.	78.0	186.0	264.0
CLASS A CONCRETE	C.Y.	41.3	79.3	120.6
EPOXY COATED REINFORCING STEEL	LB.	5,510.0	10,640.0	16,150.0
PILES, FURNISHED (HP 10X42)	L.F.	188.0	394.0	582.0
PILES, FURNISHED (HP 12X53)	L.F.	634.0	851.0	1,485.0
PILES, DRIVEN (HP 10X42)	L.F.	188.0	394.0	582.0
PILES, DRIVEN (HP 12X53)	L.F.	634.0	851.0	1,485.0
WATER REPELLENT (VISUALLY INSPECTED)	S.Y.	43.0	69.0	112.0
6" PERFORATED PIPE UNDERDRAIN ROUND	L.F.	34.0	34.0	68.0
6" NON-PERF. PIPE UNDERDRAIN RND.	L.F.	30.0	45.0	75.0



ANCHOR BOLT LAYOUT

- NOTES:
- FOR WINGWALL ELEVATIONS, SEE SHT. 51
 - FOR ABUTMENT EXCAVATION DIAGRAM, SEE SHT. 56
 - FOR LOCATION OF PERF. PIPE UNDERDRAIN, SEE SHT. 56
 - FOR SLAB DETAILS AT ABUT. BKWLL., SEE SHT. 67
 - FOR BAR LIST, SEE SHT. 50
 - FOR PEDESTAL DETAILS, SEE SHT. 49.
 - ALL EXPOSED EDGES SHALL BE CHAMFERED 3/4" UNLESS SHOWN OR NOTED OTHERWISE.
 - SEE STANDARD HP-1-2 FOR PILE ENCASEMENT DETAILS.



PENETRATING WATER REPELLENT TREATMENT

DESIGN		ROCK CRUSHER RD. OVER I-35		MURRAY COUNTY	
DESIGN		BRIDGE "A"			
DRAWN					
CHECKED					
APPROVED					
SQUAD	G/K ENGR.	JOB PIECE NO.	30363(04)	SHEET NO.	48

ABUTMENT DETAILS
(1 OF 8)

X:\Odot\EC-1589B\Struc\Bridge_A\ABUT1-1.dgn

3/2/2017