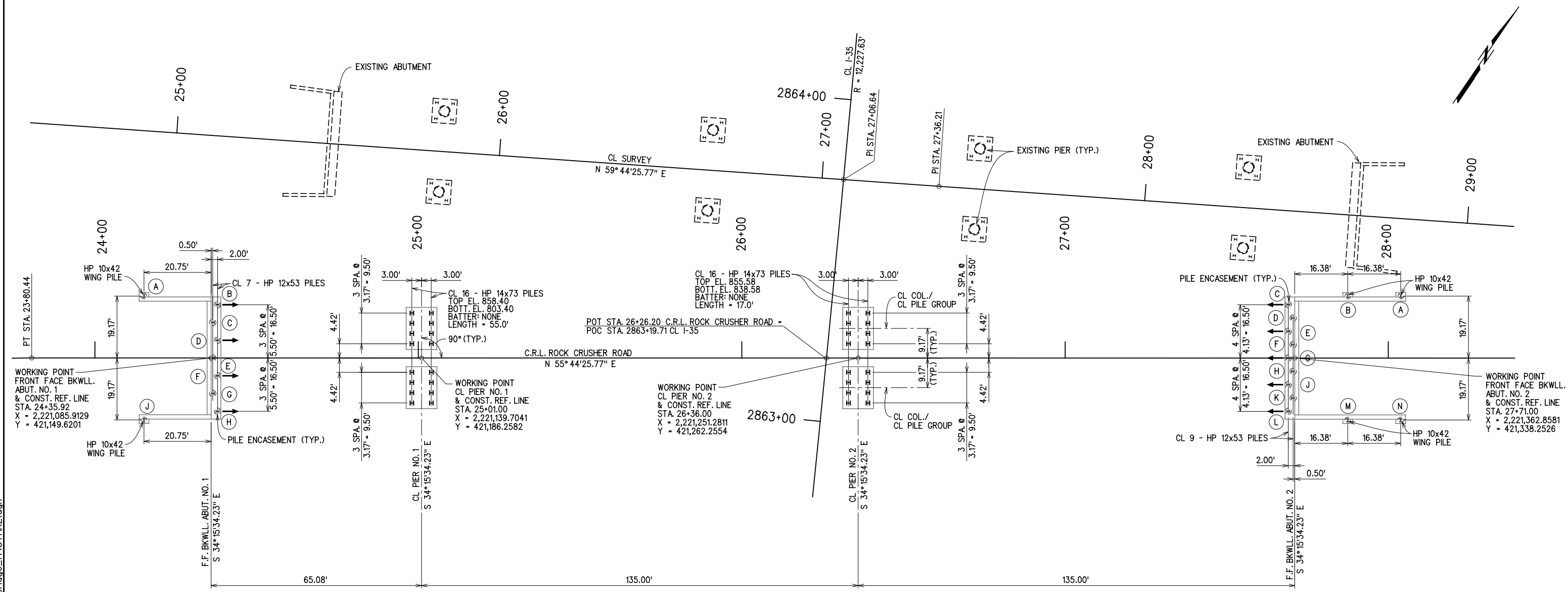


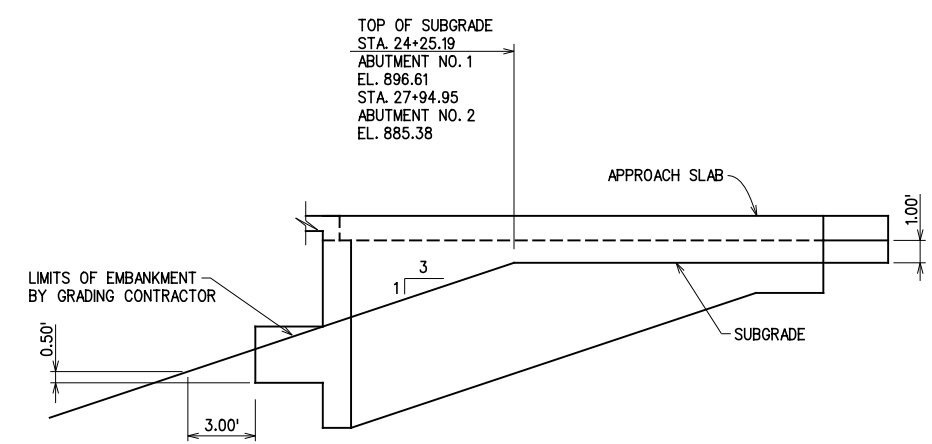
REV. NO.	DESCRIPTION	REVISIONS	DATE

← INDICATES DIRECTION OF BATTER (2:12)



BRIDGE STAKING DIAGRAM

ABUTMENT NO. 1 PILES				
PILE	TOP ELEV.	BOTT. ELEV.	BATTER 2:12	PILE LENGTH
A	895.53	801.53	NO	94.0'
B	891.53	801.77	YES	91.0'
C	891.53	801.53	NO	90.0'
D	891.53	801.77	YES	91.0'
E	891.53	801.53	NO	90.0'
F	891.53	801.77	YES	91.0'
G	891.53	801.53	NO	90.0'
H	891.53	801.77	YES	91.0'
J	895.53	801.53	NO	94.0'



SUBGRADE DETAIL

ABUTMENT NO. 2 PILES				
PILE	TOP ELEV.	BOTT. ELEV.	BATTER 2:12	PILE LENGTH
A	883.90	782.90	NO	101.0'
B	878.94	782.94	NO	96.0'
C	876.90	783.19	YES	95.0'
D	876.90	782.90	NO	94.0'
E	876.90	783.19	YES	95.0'
F	876.90	782.90	NO	94.0'
G	876.90	783.19	YES	95.0'
H	876.90	782.90	NO	94.0'
J	876.90	783.19	YES	95.0'
K	876.90	782.90	NO	94.0'
L	876.90	783.19	YES	95.0'
M	878.94	782.94	NO	96.0'
N	883.90	782.90	NO	101.0'

DESIGN		ROCK CRUSHER RD. OVER I-35	MURRAY COUNTY
DRAWN		BRIDGE "A"	
CHECKED		BRIDGE STAKING DIAGRAM	
APPROVED			
SQUAD	G/K ENGR.	JOB PIECE NO. 30363(04)	SHEET NO. 47

X:\0dot\EC-1589B\Struc\Bridge_A\STAKE.dgn

3/2/2017