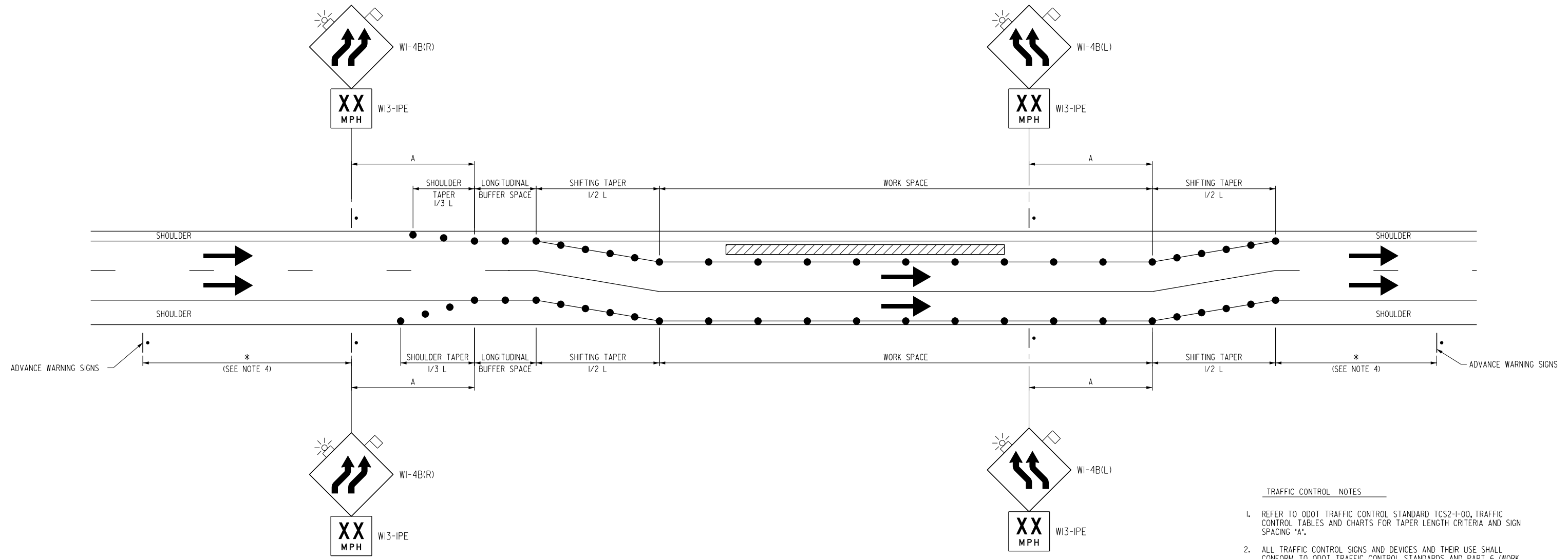


L:\Projects\2014\040059\00-GK-ODOT-ECI589B\135 Bridge\CAD\Sheets\ECI589B_IC07.dgn

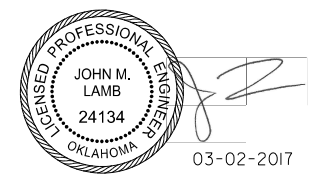


- TRAFFIC CONTROL NOTES**
- REFER TO ODOT TRAFFIC CONTROL STANDARD TCS2-I-00, TRAFFIC CONTROL TABLES AND CHARTS FOR TAPER LENGTH CRITERIA AND SIGN SPACING "A".
 - ALL TRAFFIC CONTROL SIGNS AND DEVICES AND THEIR USE SHALL CONFORM TO ODOT TRAFFIC CONTROL STANDARDS AND PART 6 (WORK ZONES) OF THE MANUAL ON UNIFORM TRAFFIC CONTROL DEVICES (MUTCD).
 - THE HIGHWAY IS TO REMAIN OPEN TO TRAFFIC THROUGHOUT CONSTRUCTION.
 - SEE TRAFFIC CONTROL PLANS, SHEET 32, FOR ADVANCE WARNING SIGNS LOCATION AND SPACING.

I-35 TRAFFIC SHIFT DETAILS

SUMMARY OF TRAFFIC CONTROL (THIS SHEET)		
ITEM		NO. REQ'D.
SIGN: WI-4B(R)	(16.0 S.F.)	2
SIGN: WI-4B(L)	(16.0 S.F.)	2
SIGN: WI3-IPE	(4.0 S.F.)	4
SIGN: WI-8	(3.0 S.F.)	12
DRUMS		68
TYPE A LIGHTS		4

KEY:
 ● CHANNELIZING DEVICE
 ▨ WORK AREA



CA 5769 PE/LS
 LAMB-STAR ENGINEERING, L.P.
 5700 W. PLANO PARKWAY, SUITE 1000
 PLANO, TX 75093
 214-440-3600

DESIGN	WLO	
DRAWN	TWW	
CHECKED	WLO	
APPROVED	JML	
SQUAD	LSE	

TRAFFIC CONTROL PLAN
I-35 TRAFFIC SHIFT
 JOB PIECE NO. 30363(04) SHEET NO. 39