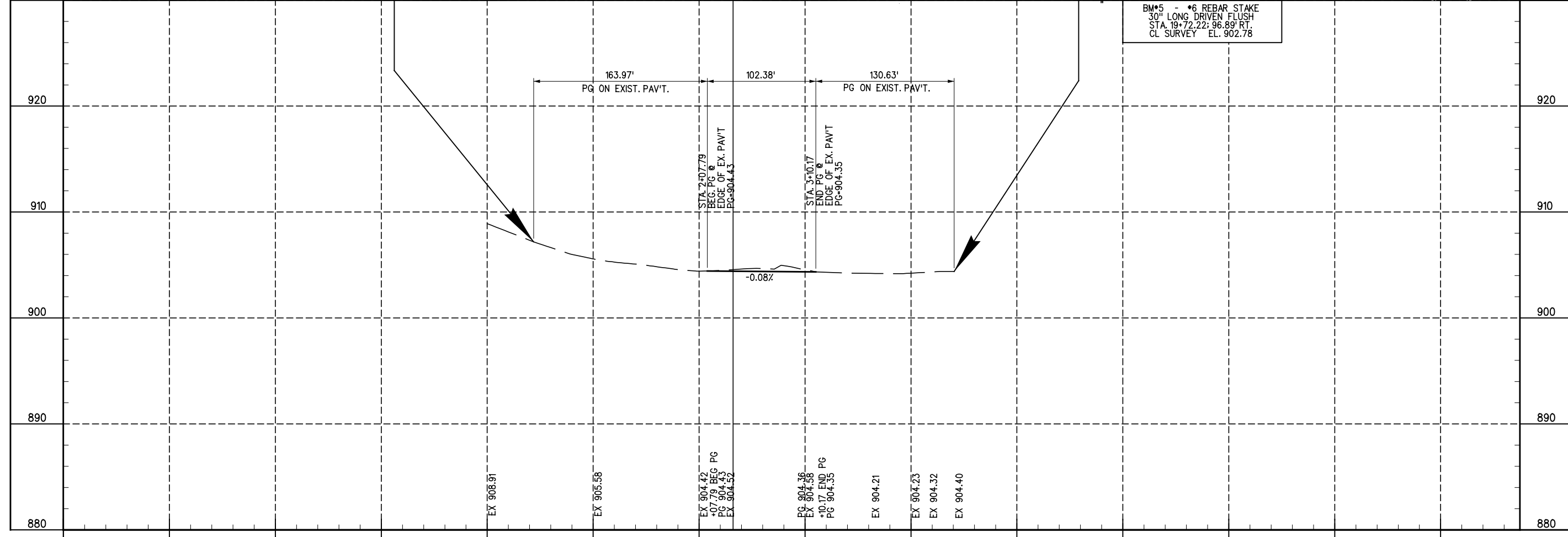
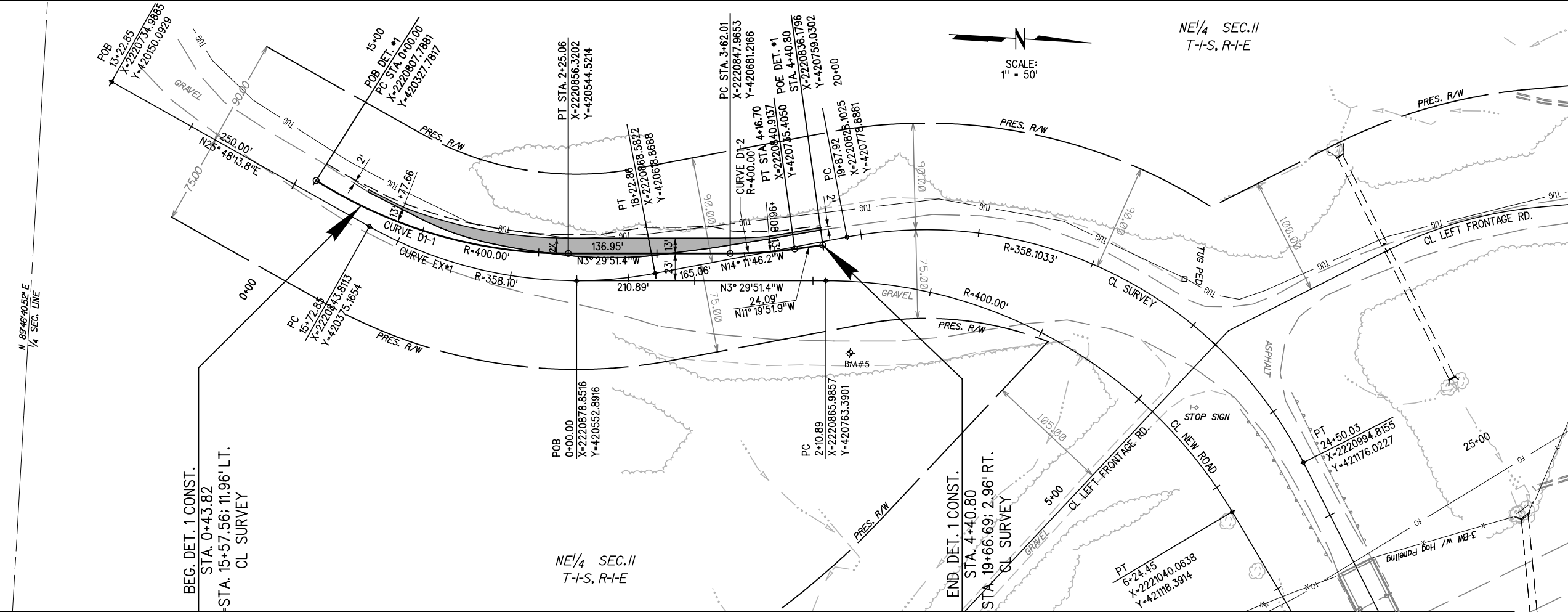


SE 1/4 SEC. II  
T-I-S, R-I-E

NE 1/4 SEC. II  
T-I-S, R-I-E

CURVE DATA  
CURVE D1-1  
PISTA. 1+15.60  
N. 420,429.1388  
E. 2,220,863.3725  
 $\Delta = 32^\circ 14' 17''$   
T = 115.60'  
L = 225.06'  
R = 400.00'  
E = 16.37'

CURVE DATA  
CURVE D1-2  
PISTA. 3+89.40  
N. 420,708.5522  
E. 2,220,846.2945  
 $\Delta = 7^\circ 50' 00''$   
T = 27.39'  
L = 54.69'  
R = 400.00'  
E = 0.94'



BM#5 - \*6 REBAR STAKE  
30" LONG DRIVEN FLUSH  
STA. 19+72.22; 96.89' RT.  
CL SURVEY EL. 902.78

X:\Odot\EC-1589B\Civil\Detour\_1 P&P.dgn

3/2/2017