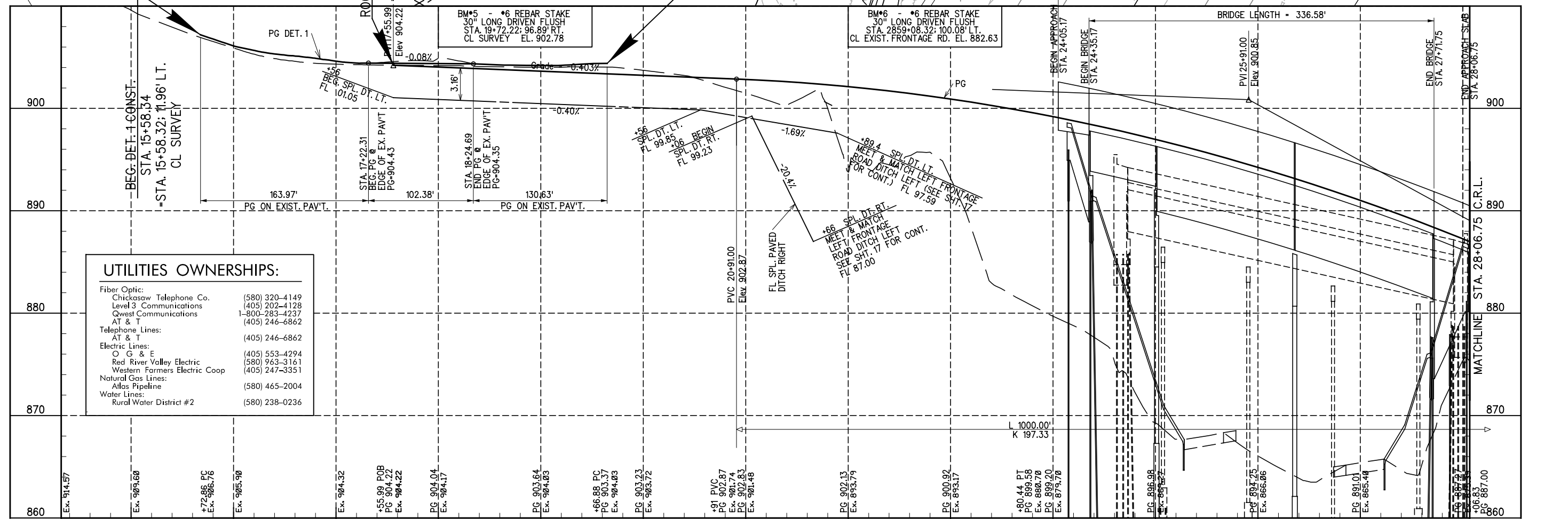
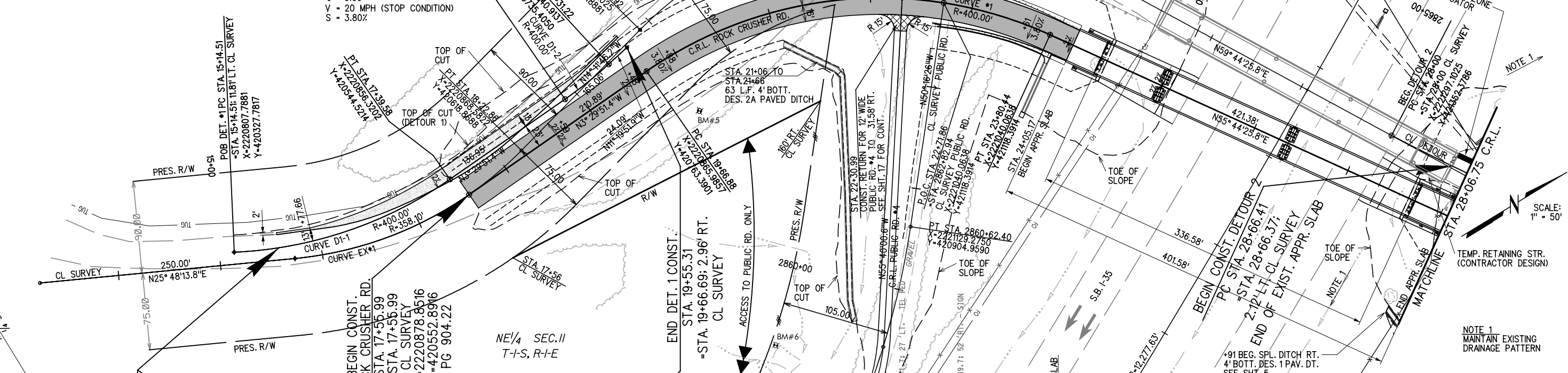


CURVE DATA CURVE EX*1	CURVE DATA CURVE D1-1	CURVE DATA CURVE D1-2	CURVE DATA CURVE *1
PISTA. 17+03.195 N. 420,492.5090 E. 2,220,900.5482 Δ = 40°00'03" T = 130.34' L = 250.01' R = 358.10' E = 22.98'	PISTA. 16+30.11 N. 420,429.1388 E. 2,220,863.3725 Δ = 32°14'17" T = 115.60' L = 225.06' R = 400.00' E = 16.37'	PISTA. 19+03.92 N. 420,708.5522 E. 2,220,846.2945 Δ = 7°50'00" T = 27.39' L = 54.69' R = 400.00' E = 0.94'	PISTA. 14+38.30 N. 420,990.3741 E. 2,220,852.1123 Δ = 59°14'17" T = 227.41' L = 413.56' R = 400.00' E = 60.12' e = 0.06 V = 20 MPH (STOP CONDITION) S = 3.80%



UTILITIES OWNERSHIPS:

Fiber Optic:	
Chickasaw Telephone Co.	(580) 320-4149
Level 3 Communications	(405) 202-4128
Qwest Communications	1-800-283-4237
AT & T	(405) 246-6862
Telephone Lines:	
AT & T	(405) 246-6862
Electric Lines:	
O G & E	(405) 553-4294
Red River Valley Electric	(580) 963-3161
Western Farmers Electric Coop	(405) 247-3351
Natural Gas Lines:	
Atlas Pipeline	(580) 465-2004
Water Lines:	
Rural Water District #2	(580) 238-0236