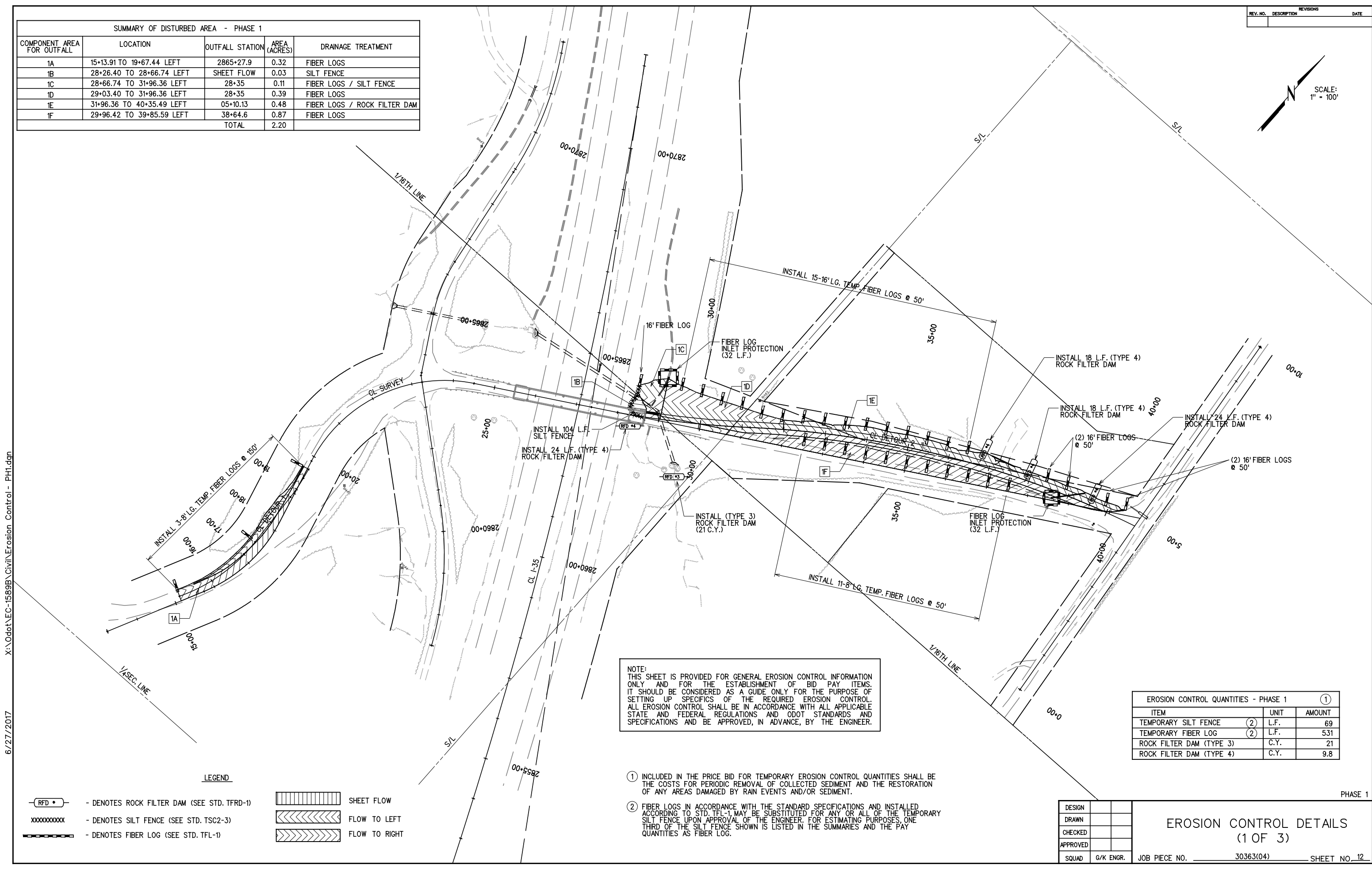
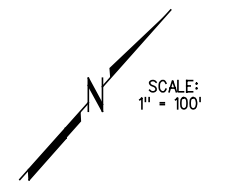


REV. NO.	DESCRIPTION	DATE

SUMMARY OF DISTURBED AREA - PHASE 1				
COMPONENT AREA FOR OUTFALL	LOCATION	OUTFALL STATION	AREA (ACRES)	DRAINAGE TREATMENT
1A	15+13.91 TO 19+67.44 LEFT	2865+27.9	0.32	FIBER LOGS
1B	28+26.40 TO 28+66.74 LEFT	SHEET FLOW	0.03	SILT FENCE
1C	28+66.74 TO 31+96.36 LEFT	28+35	0.11	FIBER LOGS / SILT FENCE
1D	29+03.40 TO 31+96.36 LEFT	28+35	0.39	FIBER LOGS
1E	31+96.36 TO 40+35.49 LEFT	05+10.13	0.48	FIBER LOGS / ROCK FILTER DAM
1F	29+96.42 TO 39+85.59 LEFT	38+64.6	0.87	FIBER LOGS
TOTAL			2.20	



NOTE:
 THIS SHEET IS PROVIDED FOR GENERAL EROSION CONTROL INFORMATION ONLY AND FOR THE ESTABLISHMENT OF BID PAY ITEMS. IT SHOULD BE CONSIDERED AS A GUIDE ONLY FOR THE PURPOSE OF SETTING UP SPECIFICS OF THE REQUIRED EROSION CONTROL. ALL EROSION CONTROL SHALL BE IN ACCORDANCE WITH ALL APPLICABLE STATE AND FEDERAL REGULATIONS AND ODOT STANDARDS AND SPECIFICATIONS AND BE APPROVED, IN ADVANCE, BY THE ENGINEER.

EROSION CONTROL QUANTITIES - PHASE 1			①
ITEM	UNIT	AMOUNT	
TEMPORARY SILT FENCE	(2) L.F.	69	
TEMPORARY FIBER LOG	(2) L.F.	531	
ROCK FILTER DAM (TYPE 3)	C.Y.	21	
ROCK FILTER DAM (TYPE 4)	C.Y.	9.8	

- ① INCLUDED IN THE PRICE BID FOR TEMPORARY EROSION CONTROL QUANTITIES SHALL BE THE COSTS FOR PERIODIC REMOVAL OF COLLECTED SEDIMENT AND THE RESTORATION OF ANY AREAS DAMAGED BY RAIN EVENTS AND/OR SEDIMENT.
- ② FIBER LOGS IN ACCORDANCE WITH THE STANDARD SPECIFICATIONS AND INSTALLED ACCORDING TO STD. TFL-1, MAY BE SUBSTITUTED FOR ANY OR ALL OF THE TEMPORARY SILT FENCE UPON APPROVAL OF THE ENGINEER. FOR ESTIMATING PURPOSES, ONE THIRD OF THE SILT FENCE SHOWN IS LISTED IN THE SUMMARIES AND THE PAY QUANTITIES AS FIBER LOG.

LEGEND

	- DENOTES ROCK FILTER DAM (SEE STD. TFRD-1)		SHEET FLOW
	- DENOTES SILT FENCE (SEE STD. TSC2-3)		FLOW TO LEFT
	- DENOTES FIBER LOG (SEE STD. TFL-1)		FLOW TO RIGHT

DESIGN	
DRAWN	
CHECKED	
APPROVED	
SQUAD	G/K ENGR.

PHASE 1

EROSION CONTROL DETAILS

(1 OF 3)

JOB PIECE NO. 30363(04) SHEET NO. 12

X:\Odot\EC-1589B\Civil\Erosion_Control - PH1.dgn 6/27/2017