

SCALES:
1" = 50' HOR

SECTION 34 T21N R12W

SECTION 27 T21N R12W

NOTE: RIGHT-OF-WAY
DIMENSIONED FROM SECTION LINE.

FROM 1/4 SECTION LINE TO
SECTION LINE IS 2639.48'

ALL BENCHMARKS ARE
REFERENCED FROM SECTION LINE.

GRADE DITCH TO DRAIN
TO THE WEST

CL STA. 200+00.00
BEGIN ACCESS JP NO. 28348(04)
X=1831961.3810
Y=459408.7996

CL STA. 204+44.33
END ACCESS JP NO. 28348(04)
X=1832266.4331
Y=459693.9248

BENCHMARK NO. 502 1/2" IRON PIN STA. 99+20.98 X=1831960.1680	308.06 FT. LT. ELEV. 1272.035 Y=459170.1690	BENCHMARK NO. 501 1/2" IRON PIN STA. 99+43.66 X=1832105.8320	162.29 FT. LT. ELEV. 1278.409 Y=459193.5020
---	---	---	---

CONTROL POINT NO. 2 1/2" IRON PIN STA. 100+23.83 X=1831972.9640	294.83 FT. LT. ELEV. 1276.937 Y=459273.4720	BENCHMARK NO. 500 1/2" IRON PIN STA. 100+56.73 X=1832204.1710	63.52 FT. LT. ELEV. 1275.330 Y=459307.1210
--	---	--	--

GRADE DITCH TO DRAIN
TO THE EAST

STA. 104+43.37 =
STA. 204+44.33

TOP OF CUT

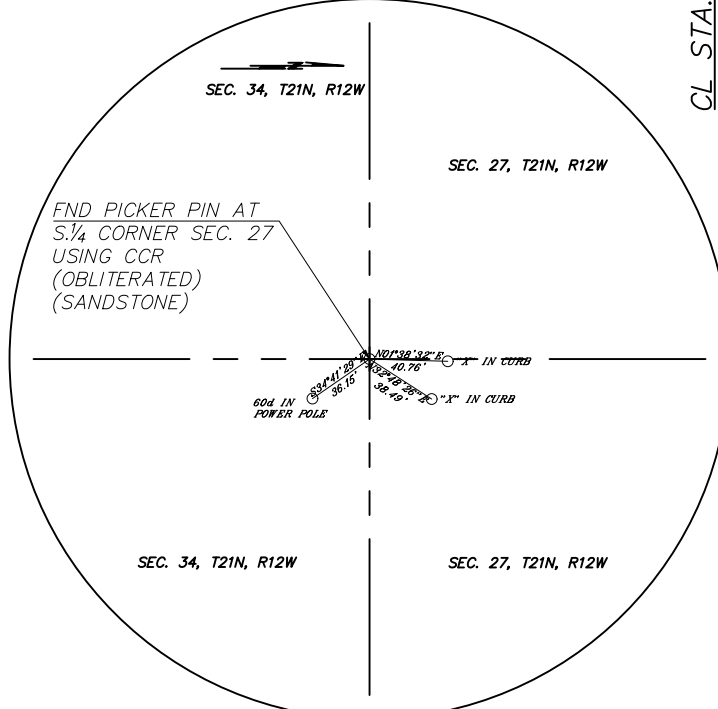
CL STA. 106+00.00
END JP NO. 28348(04)
X=1832265.9995
Y=459850.5545

NOTE: CONTRACTOR SHALL MEET &
MATCH EXISTING ROADWAY & DITCHES
AT BEG. & END OF PROJECT.

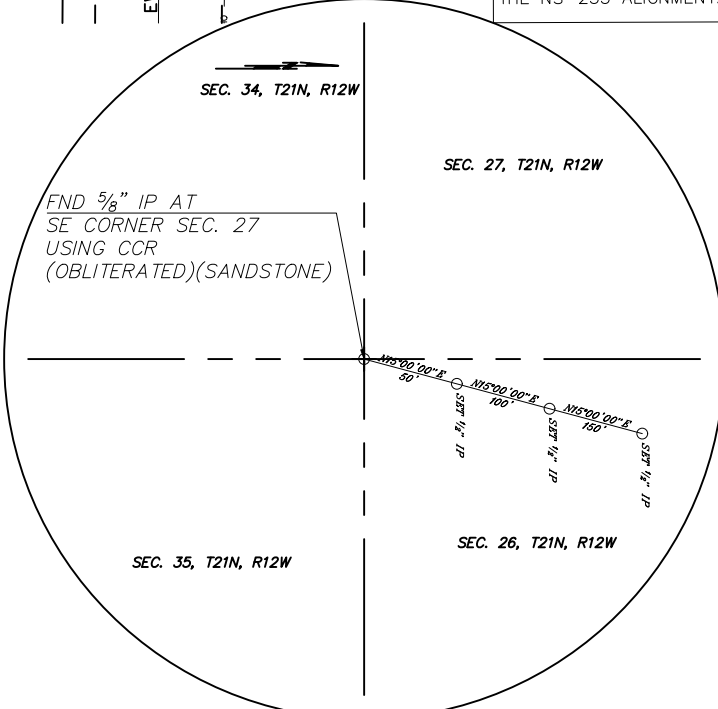
R/W IS DIMENSIONED FROM
THE NS-255 ALIGNMENT.

SECTION 35 T21N R12W

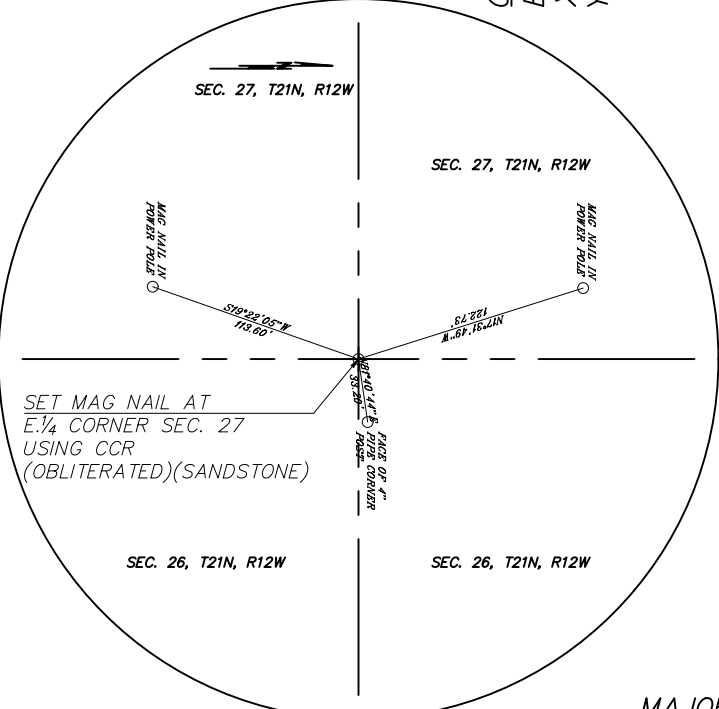
SECTION 26 T21N R12W



S. 1/4 SECTION CORNER
SECTION 27, T21N, R12W
STA. 100+00.00, LT. 2,628.62"
X=1829639.3090
Y=459267.6890



SE SECTION CORNER
SECTION 27, T21N, R12W
STA. 100+00.00
X=1832267.8700
Y=459250.5600



E. 1/4 SECTION CORNER
SECTION 27, T21N, R12W
STA. 126+31.98
X=1832282.4900
Y=461882.5030

MAJOR COUNTY SAND CREEK
ALIGNMENT, SURVEY
REFERENCES AND R/W
J/P NO. 28348(04) SHEET NO. S001