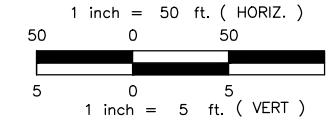
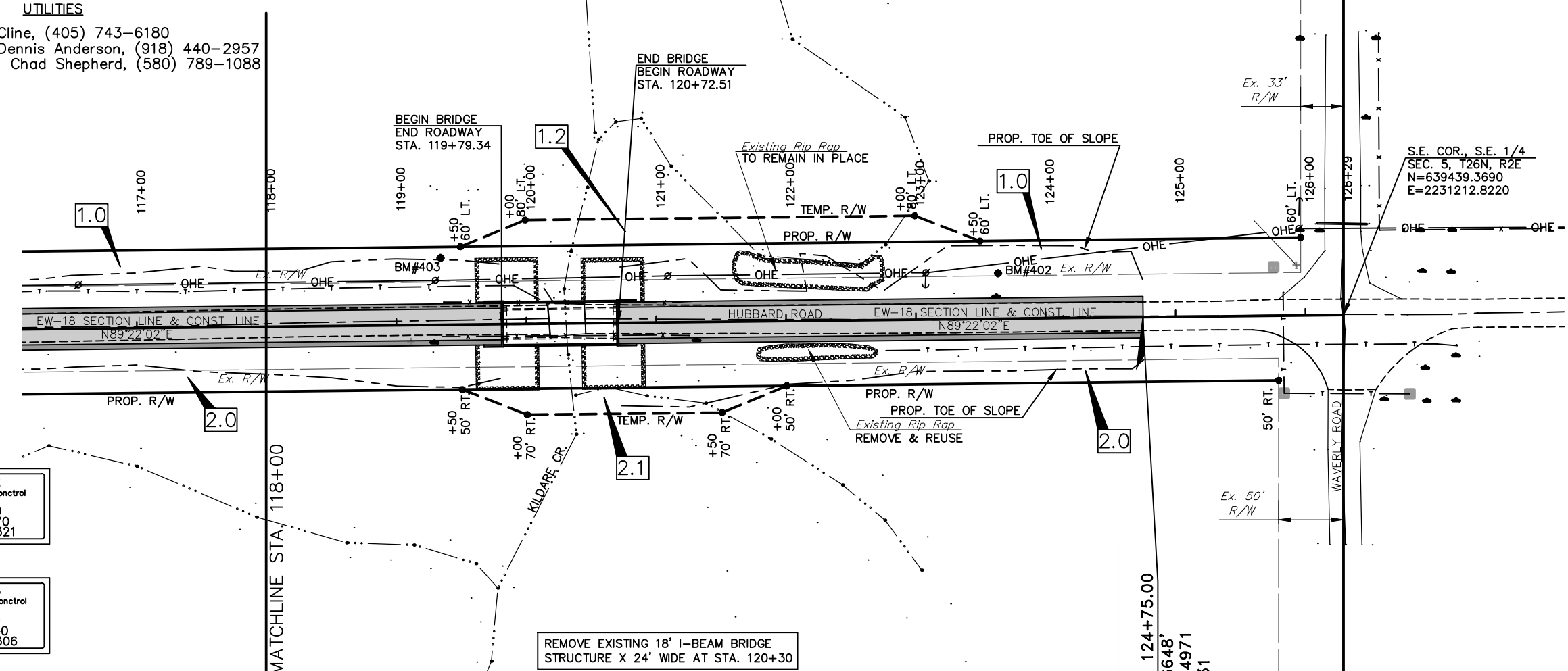


UTILITIES
 AT&T - Rod Cline, (405) 743-6180
 Cable One - Dennis Anderson, (918) 440-2957
 Kay Electric - Chad Shepherd, (580) 789-1088

DESCRIPTION	REVISIONS	DATE



- LEGEND**
- PROPOSED ASPHALT PAVEMENT
 - PROPOSED ASPHALT SHOULDER
 - PROPOSED T.B.S.C.



Benchmark #402
 Set 1/2" Iron Pin W/ Control Cap
 N=639471.4240
 E=2230946.7070
 Elevation=983.321

Benchmark #403
 Set 1/2" Iron Pin W/ Control Cap
 N=639483.1810
 E=2230517.4040
 Elevation=982.306

REMOVE EXISTING 18' I-BEAM BRIDGE
 STRUCTURE X 24' WIDE AT STA. 120+30

