

STATE OF OKLAHOMA  
DEPARTMENT OF TRANSPORTATION

PLAN OF PROPOSED  
**COUNTY BRIDGE**

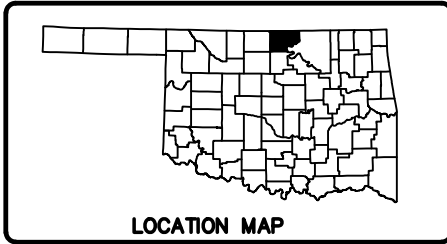
PROJECT NO. STP-236C(039)CI  
BRIDGE REPLACEMENT PROJECT  
BOIS D'ARC CREEK AND KILDARE CREEK  
**KAY COUNTY**

STATE JOB PIECE NO. 28433(04)  
BRIDGE 'A' LOCATION NO. 36E0180N3300006  
BRIDGE 'B' LOCATION NO. 36E0180N3300009  
BRIDGE A (EXISTING N.B.I. NO. 12208)  
(NEW N.B.I. NO. 31766)  
BRIDGE B (EXISTING N.B.I. NO. N/A)  
(NEW N.B.I. NO. 31774)

INDEX OF SHEETS

SHEET NO.	TITLE
0001	TITLE SHEET
0002	TYPICAL SECTIONS
AB01	SUMMARY OF PAY QUANTITIES & NOTES (BRIDGE)
AR01	SUMMARY OF PAY QUANTITIES & NOTES (ROADWAY)
AX01	SUMMARIES
B001-B002	GENERAL PLAN AND ELEVATION
B003-B005	BORE LOGS
B006-B007	PIER DETAILS
B008	SHAFT INSPECTION DEVICE LOCATION
R001	STORM WATER MANAGEMENT PLAN
R002	EROSION CONTROL PLAN
R003-R005	PLAN & PROFILE SHEETS
T001	TRAFFIC CONTROL PLAN
X001-X011	CROSS SECTIONS

MAINTENANCE	TRAFFIC CONTROL	ROADWAY	BRIDGE
GRH1-1-00	TCS1-1-01	SSS-1-1	CB26..32-C.I-SKO...30-GRAU-BC-00E
GRH2-1-00	TCS2-1-00	TSC2-3-2	CB26..32-C.I-SKO...30-PCB-DTL-1-01E
GRH3-1-00	TCS4-1-01	TSD-2-0	CB26..32-C.I-SKO...30-PCB-DTL-2-01E
GET-2-00	TCS5-1-00	ASCD-5-2	CB26...32-C-SKO-WING-PC2-01E
	TCS7-1-02	PSE-1-0	CB26...32-C-SKO-WING-PC3-01E
	TCS9-1-01	CET4S-3-2	CB26...32-C-SKO-ABUT-MISC-01E
	TCS14-1-00	SPI-4-1	CB32-C-SKO-ABUT-PC2-02E
	TCS15-1-00	FHTMPP-1-0	CB32-C-SKO-ABUT-PC3-02E
		RDI-3-1	CB32-C-SKO-DKSLB-BLIST-01E
			CB32-C-SKO-XSECT-PC234-01E
			CB32-C-SKO-LSECT-PCB-01E
			CB32-C-SKO-DIA-END-PC234-01E
			CB32-C-SKO-SPR-QUAN-PCB-1-01E
			CB32-C-SKO-SPR-QUAN-PCB-2-01E
			CB32-C-SKO..30-PCB-II-45-01E
			CB32-C-SKO..30-PCB-III-90-01E
			CB32-C-SKO..30-DIA-INT-PCB-01E
			CB32-C-SKO..30-BRG-PC2-01E
			CB32-C-SKO..30-BRG-PC3-01E
			EJ-SQ-04E
			EJ-DTL-02E
			HPI-2-01E
			TR3-2-01E



LOCATION MAP

SEE SURVEY DATA SHEETS  
FOR SURVEY DATA CONTROL

DESIGN DATA

ADT 2017 = 2064  
ADT 2037 = 3067  
V = 45 MPH  
FLEX ESALS = 3.34 M

SCALES  
PLAN 1" = 50'

STA. 108+42.18 BEGIN BRIDGE 'A'  
STA. 110+26.68 END BRIDGE 'A'  
BRIDGE LENGTH 184'-6"  
Lat. N36°45'12"  
Long. W97°06'33"

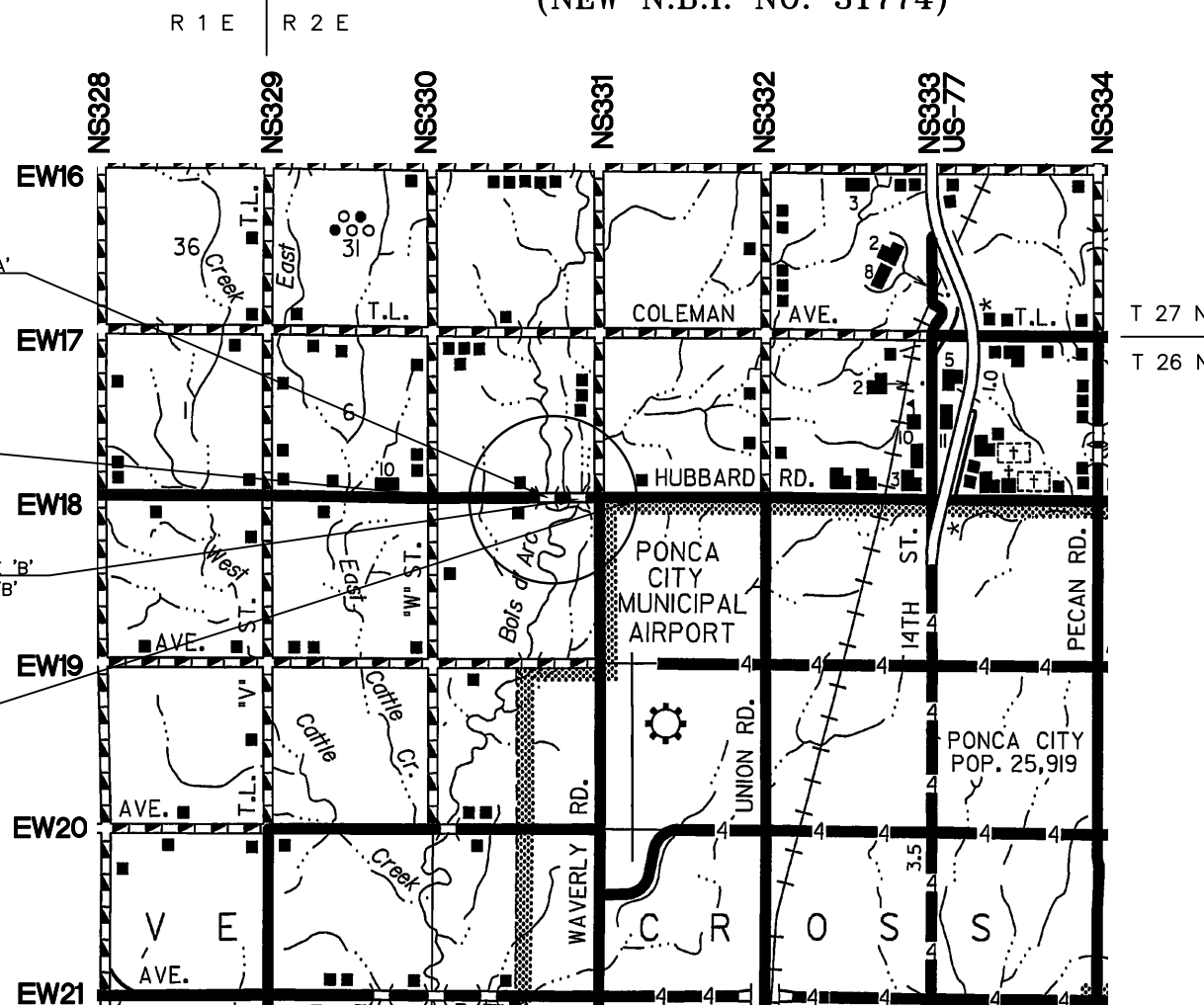
BEGIN PROJECT  
STA. 103+50

STA. 119+79.34 BEGIN BRIDGE 'B'  
STA. 120+72.51 END BRIDGE 'B'  
BRIDGE LENGTH 93'-2"  
Lat. N36°45'12"  
Long. W97°06'19"

END PROJECT  
STA. 124+75

CONVENTIONAL SYMBOLS

- PROPOSED ROAD
- RAILROADS
- RANGE & TOWNSHIP SECTION LINES
- QUARTER SECTION LINES
- FENCES
- GROUND LINE
- EXISTING ROADS
- BASE LINE
- GRADE LINES
- TELEPHONE & TELEGRAPH
- POWER LINES
- BUILDINGS
- OIL WELL
- DRAINAGE STRUCTURES - IN PLACE
- DRAINAGE STRUCTURES - NEW
- RIGHT-OF-WAY LINES - EXISTING
- RIGHT-OF-WAY LINES - NEW
- CONTROLLED ACCESS
- RIGHT-OF-WAY FENCE
- FLOWLINE



ROADWAY LENGTH 1847.33 ft. 0.350 mi.  
BRIDGE LENGTH A 184.50 ft. 0.035 mi.  
BRIDGE LENGTH B 93.17 ft. 0.017 mi.  
PROJECT LENGTH 2125 ft. 0.402 mi.  
EQUATIONS : NONE  
EXCEPTIONS : NONE



KAY COUNTY COMMISSIONERS  
DATE 7-31-17  
DIST. 1  
DIST. 2  
DIST. 3  
COUNTY CLERK  
TYLER D. SCHRODER  
REGISTERED PROFESSIONAL ENGINEER NO. 25837

CIRCUIT ENGINEERING DIST. 8  
2901 N. VAN BUREN  
ENID, OK 73703  
(580) 237-4810

OKLAHOMA DEPARTMENT OF TRANSPORTATION  
DATE APPROVED  
BY  
CHIEF ENGINEER

DEPARTMENT OF TRANSPORTATION  
FEDERAL HIGHWAY ADMINISTRATION  
DATE APPROVED  
BY  
DIVISION ADMINISTRATOR

J/P NO. 28433(04) STP-236C(039)CI SHEET NO. 0001  
KAY COUNTY