

SEC. 10 T4N R26W

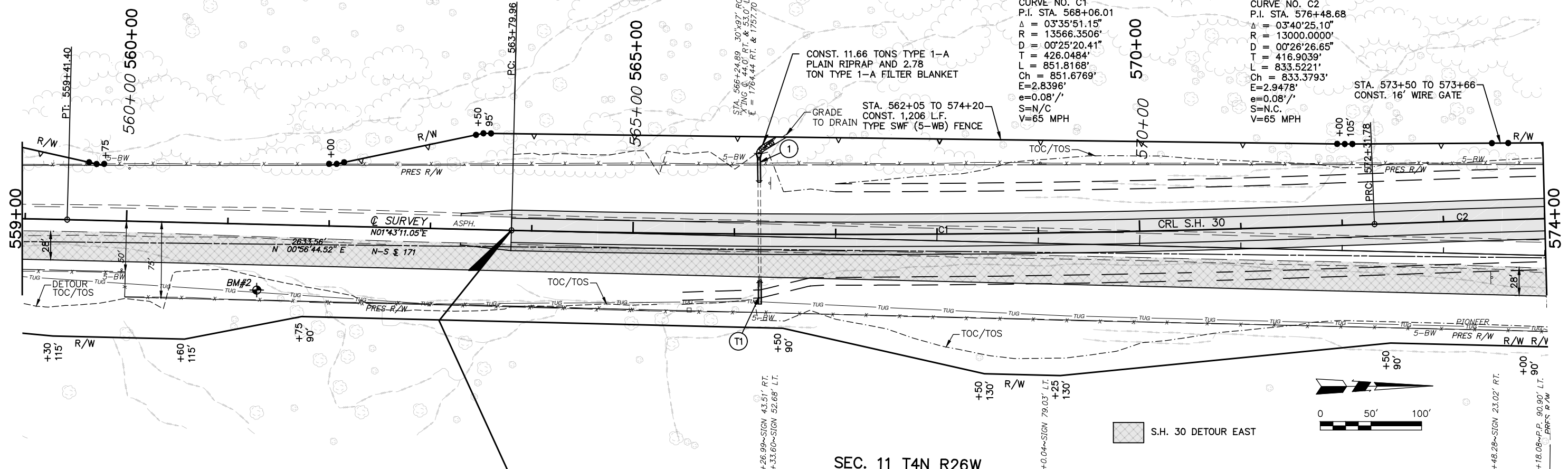
CURVE DATA
 CURVE NO. C1
 P.I. STA. 568+06.01
 $\Delta = 03^{\circ}35'51.15''$
 $R = 13566.3506'$
 $D = 00^{\circ}25'20.41''$
 $T = 426.0484'$
 $L = 851.8168'$
 $Ch = 851.6769'$
 $E = 2.8396'$
 $e = 0.08'/'$
 $S = N/C$
 $V = 65$ MPH

CURVE DATA
 CURVE NO. C2
 P.I. STA. 576+48.68
 $\Delta = 03^{\circ}40'25.10''$
 $R = 13000.0000'$
 $D = 00^{\circ}26'26.65''$
 $T = 416.9039'$
 $L = 833.5221'$
 $Ch = 833.3793'$
 $E = 2.9478'$
 $e = 0.08'/'$
 $S = N/C$
 $V = 65$ MPH

CONST. 11.66 TONS TYPE 1-A
 PLAIN RIPRAP AND 2.78
 TON TYPE 1-A FILTER BLANKET

STA. 562+05 TO 574+20
 CONST. 1,206 LF.
 TYPE SWF (5-WB) FENCE

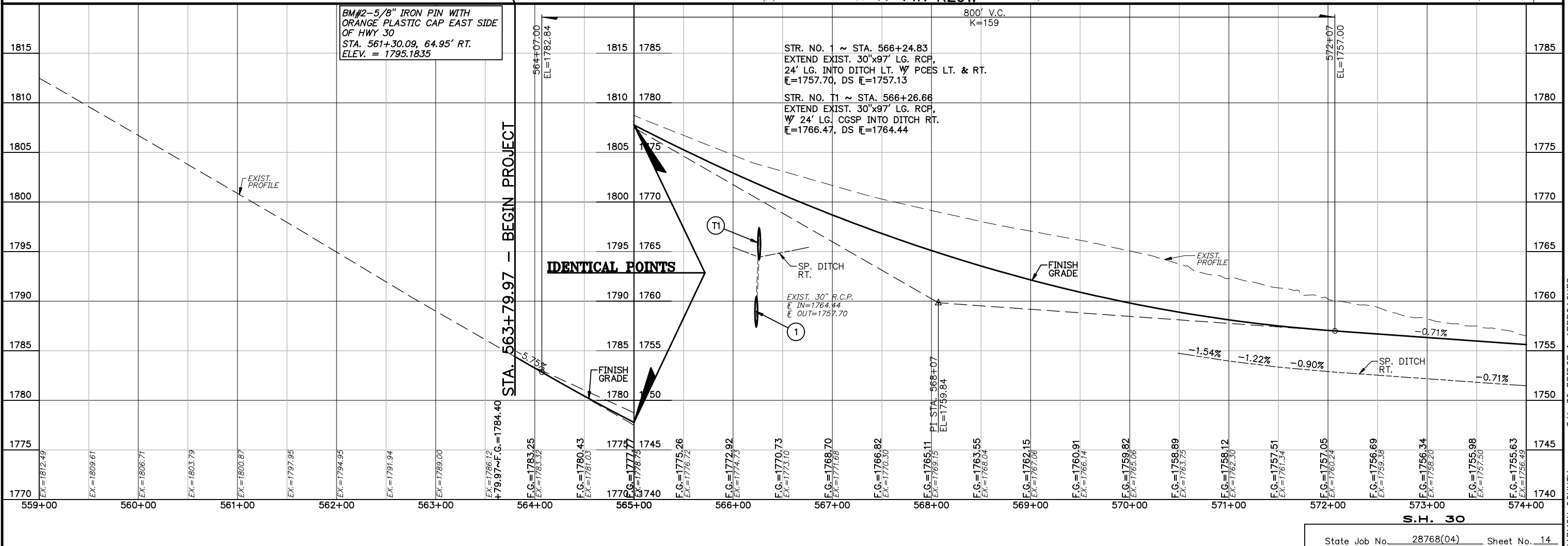
STA. 573+50 TO 573+66
 CONST. 16' WIRE GATE



SEC. 11 T4N R26W

STR. NO. 1 ~ STA. 566+24.83
 EXTEND EXIST. 30"x97' LG. RCP,
 24' LG. INTO DITCH LT. W PCES LT. & RT.
 $\bar{E} = 1757.70$, DS $\bar{E} = 1757.13$

STR. NO. T1 ~ STA. 566+26.66
 EXTEND EXIST. 30"x97' LG. RCP,
 W 24' LG. CGSP INTO DITCH RT.
 $\bar{E} = 1766.47$, DS $\bar{E} = 1764.44$



BM#2-5/8" IRON PIN WITH
 ORANGE PLASTIC CAP EAST SIDE
 OF HWY 30
 STA. 561+30.09, 64.95' RT.
 ELEV. = 1795.1835

STA. 563+79.97 - BEGIN PROJECT

IDENTICAL POINTS

S.H. 30