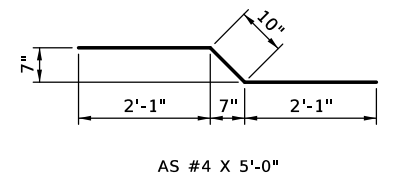
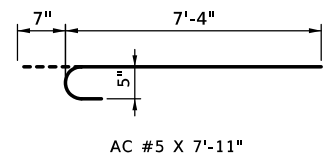
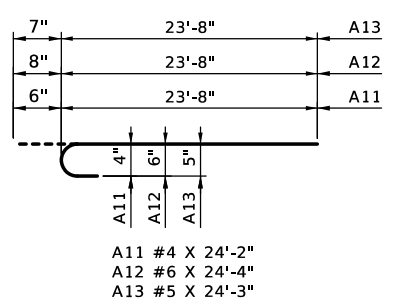
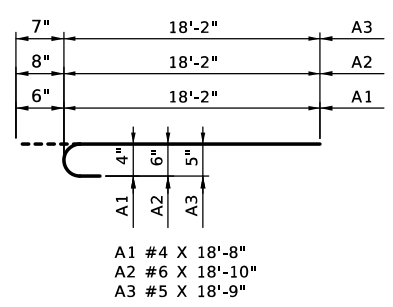
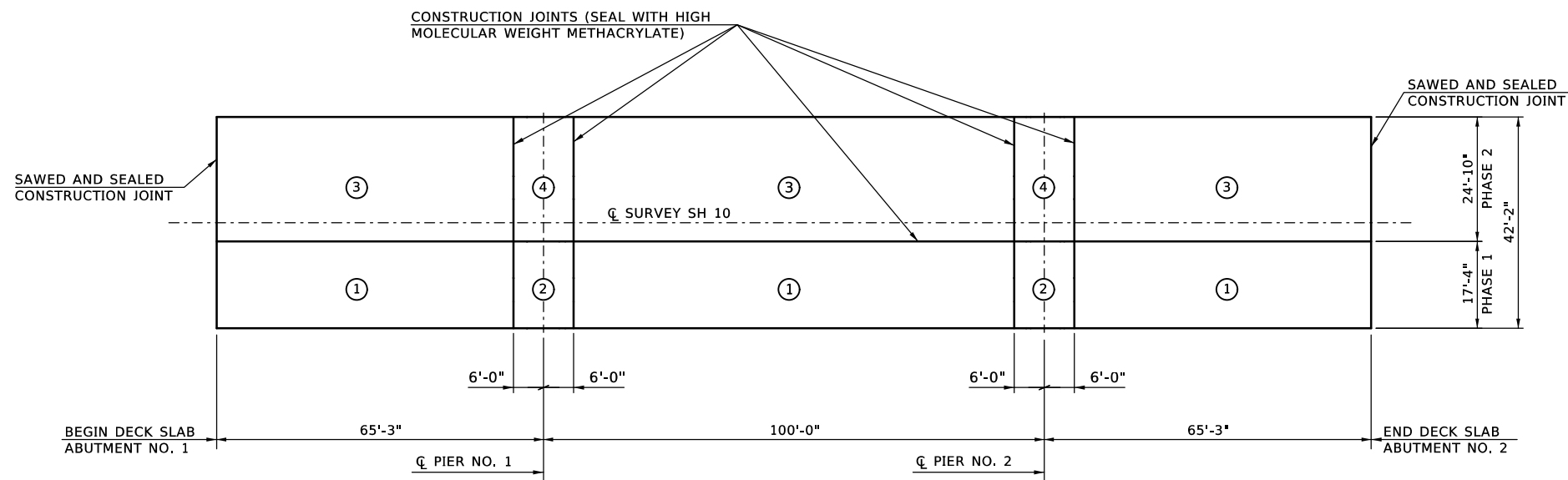
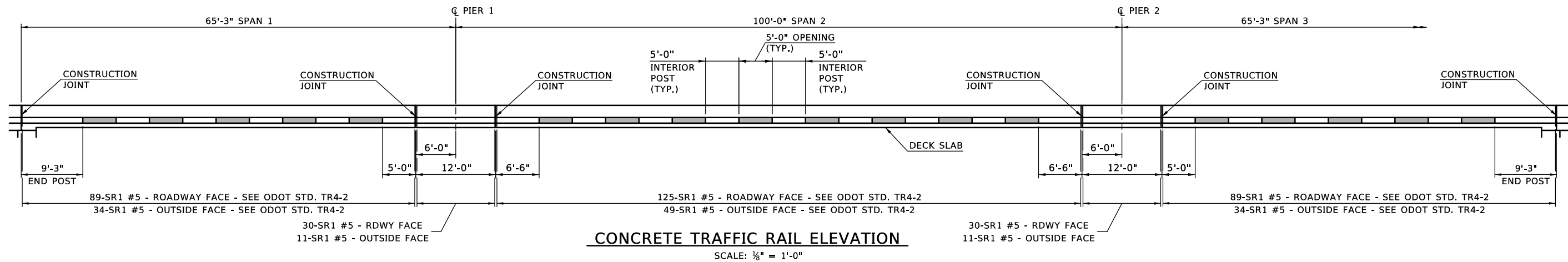


7/31/2017 12:18:50 PM P:\FDE\650-TUL\CVV\_309908\_ODOT\_ECIF09\_SHO\_20\_20\_DESIGN\_SHO\_20\_20\_CAD\_SHO\dgn\Bridg A\29068(04)\_S\_Deck-Det\_01.dgn



**NOTES:**

- EPOXY-COAT OR GALVANIZE STEEL ITEMS USED TO FACILITATE CONSTRUCTION, SUCH AS DECK FORM HANGERS, TY-BAR CLIPS, INSERT WELD ANCHORS, OR OTHER APPURTENANCES, THAT WILL REMAIN IN PLACE IN THE DECK SLAB. EPOXY-COAT IN ACCORDANCE WITH AASHTO M284 OR GALVANIZE IN ACCORDANCE WITH AASHTO M111.
- PLACE DECK SLAB CONCRETE ONE SECTION AT A TIME CONSISTENT WITH THE DECK SLAB POURING SEQUENCE DIAGRAM. IN THE EVENT OF AN EMERGENCY, HALT THE PLACEMENT OF CONCRETE BY FORMING A CONSTRUCTION JOINT MADE PERPENDICULAR TO THE DIRECTION OF THE TRAFFIC OR AS DIRECTED BY THE ENGINEER. DO NOT PLACE ANY HEAVY EQUIPMENT ON THE FINISHED DECK SLAB WITHIN 5 FEET OF ANY CONSTRUCTION JOINT UNTIL THE CONCRETE IS IN PLACE ON BOTH SIDES OF THE RESPECTIVE JOINT AND AT LEAST 48 HOURS HAS ELAPSED SINCE CONCRETE PLACEMENT. CONSTRUCTION JOINTS AT THE CLOSURE POURS IN THE DECK SLAB SHALL NOT BE KEYS.
- BARS SHALL BE CONTINUOUS THRU CONSTRUCTION JOINTS AT FIXED PIERS. DO NOT LAP WITHIN 10 FEET OF CENTERLINE OF FIXED PIER. ADDITIONAL LONGITUDINAL REINFORCING WITHIN CLOSURE POURS SHALL BE CONTINUOUS THROUGH EMERGENCY CONSTRUCTION JOINTS.
- SEAL ALL DECK SLAB CONSTRUCTION JOINTS WITH HIGH MOLECULAR WEIGHT METHACRYLATE IN ACCORDANCE WITH SECTION 523 OF THE SPECIFICATIONS. INCLUDE ALL COST OF EQUIPMENT AND LABOR FOR THE INSTALLATION OF THE HIGH MOLECULAR WEIGHT METHACRYLATE SEALER IN THE CONTRACT UNIT PRICE OF "SEALER CRACK PREPARATION". INCLUDE ALL COSTS OF THE HIGH MOLECULAR WEIGHT METHACRYLATE SEALER IN THE CONTRACT UNIT PRICE OF "SEALER RESIN". THE DEPARTMENT WILL NOT MEASURE THE PREPARATION AND SEALER OF EMERGENCY CONSTRUCTION JOINTS FOR PAYMENT.
- DECK SLAB POURING SEQUENCE: THE DECK SLAB IS DIVIDED INTO SECTIONS BETWEEN CONSTRUCTION JOINTS AS SHOWN. PLACE THE DECK SLAB CONCRETE OF EACH SECTION IN THE NUMERICAL SEQUENCE INDICATED. SECTIONS OF THE DECK SLAB WITH THE SAME NUMBER MAY BE PLACED IN ANY ORDER. SECTIONS IN SEQUENCE 2 MAY BE PLACED BEFORE ALL OF SEQUENCE 1 ARE COMPLETED IF SEQUENCE 1 AT THE COMMON CONSTRUCTION JOINT IS COMPLETE. BUT UNDER NO CIRCUMSTANCES WILL A SECTION OF SEQUENCE 2 BE POURED BEFORE THE ADJACENT SECTIONS HAVE BEEN IN PLACE FOR AT LEAST 48 HOURS.
- INSTALL ALL DIAPHRAGMS AND TIGHTEN ALL BOLTS BEFORE PLACING CONCRETE FOR THE DECK SLAB OR APPLYING OTHER MASSIVE LOADS TO THE BEAMS.

**SUPERSTRUCTURE BAR LIST - PHASE 1**  
(ONE REQUIRED)

EPOXY COATED REINFORCING					
MARK	SIZE	QTY.	FORM	LENGTH	REMARKS
ET1	#5	35	STR.	240'-8"	SEE NOTE 1
EB1	#5	35	STR.	240'-8"	SEE NOTE 1
AS	#4	70	BNT.	5'-0"	LAPS WITH ET1
A1	#4	415	BNT.	18'-8"	
A2	#6	26	BNT.	18'-10"	
A3	#5	48	BNT.	18'-9"	
AC	#5	412	BNT.	7'-11"	
B1	#5	465	STR.	18'-2"	
SR1	#5	502	BNT.	4'-1"	SEE NOTE 2

**SUPERSTRUCTURE BAR LIST - PHASE 2**  
(ONE REQUIRED)

EPOXY COATED REINFORCING					
MARK	SIZE	QTY.	FORM	LENGTH	REMARKS
ET1	#5	50	STR.	240'-8"	SEE NOTE 1
EB1	#5	50	STR.	240'-8"	SEE NOTE 1
AS	#4	100	BNT.	5'-0"	LAPS WITH ET1
A11	#4	415	BNT.	24'-2"	
A12	#6	26	BNT.	24'-4"	
A13	#5	48	BNT.	24'-3"	
AC	#5	412	BNT.	7'-11"	
B11	#5	465	STR.	23'-8"	
SR1	#5	502	BNT.	4'-1"	SEE NOTE 2

**SUPERSTRUCTURE QUANTITIES - PHASE 1**

ITEM	UNIT	TOTAL
SAW-CUT GROOVING	SY	359.2
CONCRETE RAIL (TR4)	LF	230.5
STRUCTURAL STEEL	LB	168450
WEATHERING STEEL FIXED BEARING ASSEMBLY	EA	6
STAINLESS STEEL EXPANSION BEARING ASSEMBLY	EA	12
ELASTOMERIC BEARING PADS	EA	12
CLASS AA CONCRETE	CY	113.7
EPOXY COATED REINFORCING STEEL	LB	40450
WATER REPELLENT (VISUALLY INSPECTED)	SY	259
SEALER CRACK PREPARATION	LF	69.4
SEALER RESIN	GAL	0.5

**SUPERSTRUCTURE QUANTITIES - PHASE 2**

ITEM	UNIT	TOTAL
SAW-CUT GROOVING	SY	548.8
CONCRETE RAIL (TR4)	LF	230.5
STRUCTURAL STEEL	LB	172790
WEATHERING STEEL FIXED BEARING ASSEMBLY	EA	6
STAINLESS STEEL EXPANSION BEARING ASSEMBLY	EA	12
ELASTOMERIC BEARING PADS	EA	12
CLASS AA CONCRETE	CY	162.7
MECHANICAL SPLICES	EA	955
EPOXY COATED REINFORCING STEEL	LB	53020
WATER REPELLENT (VISUALLY INSPECTED)	SY	265
SEALER CRACK PREPARATION	LF	330.0
SEALER RESIN	GAL	2.2

**NOTES:**

- INCLUDES 4 - 2'-7" MIN. LAPS.
- SEE ODOT STD. TR4-2.

Design	MKR	7/16	SH 10 OVER BIG CABIN CREEK BRIDGE A <b>SUPERSTRUCTURE DETAILS (2)</b> Job Piece No. 29068(04) Sheet No. 49	CRAIG COUNTY
Drawn	RAH	7/16		
Checked	KJS	7/16		
Approved	SAK	9/16		
Squad	BENHAM			