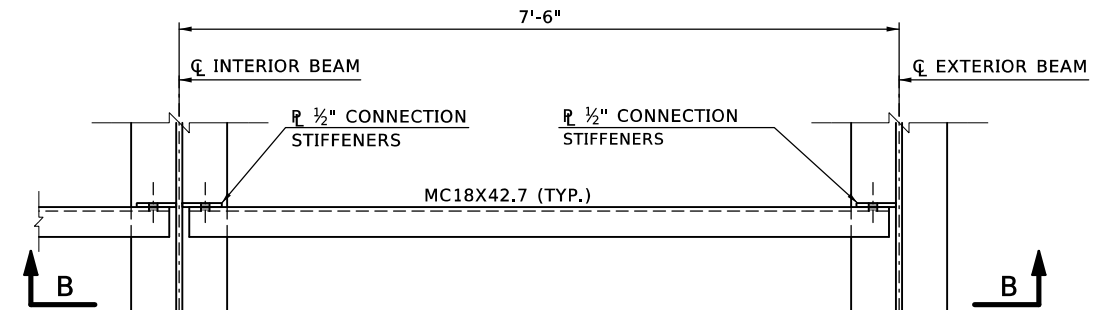


DIAPHRAGMS AT PIER NO. 1 AND 2 (2 PER PIER)
OMIT CHANNEL DIAPHRAGMS AND BOLT HOLES IN BEARING STIFFENERS AT ABUTMENTS

PLAN - DIAPHRAGMS AT PIER

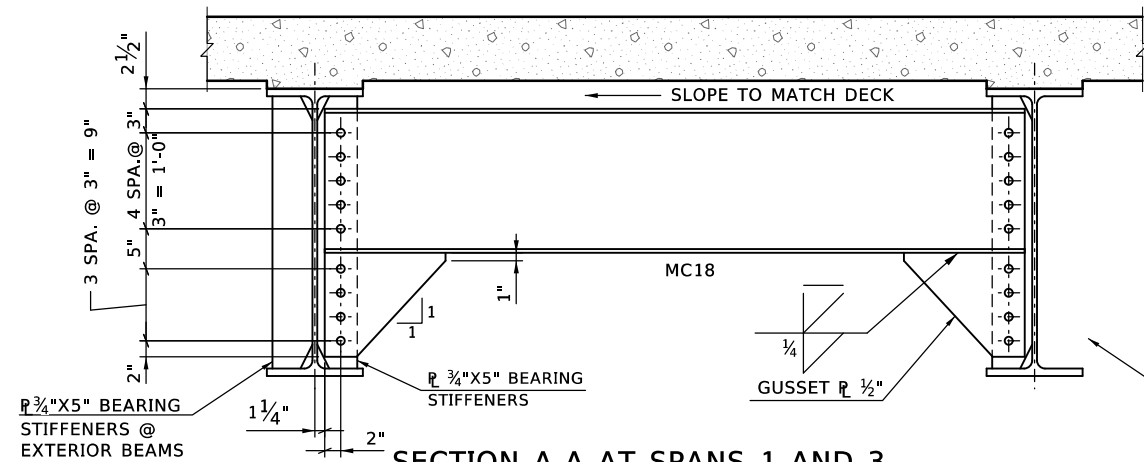
SCALE: 1" = 1'-0"



(2 DIAPHRAGMS AT SPAN 1 & 3, 4 DIAPHRAGMS AT SPAN 2)

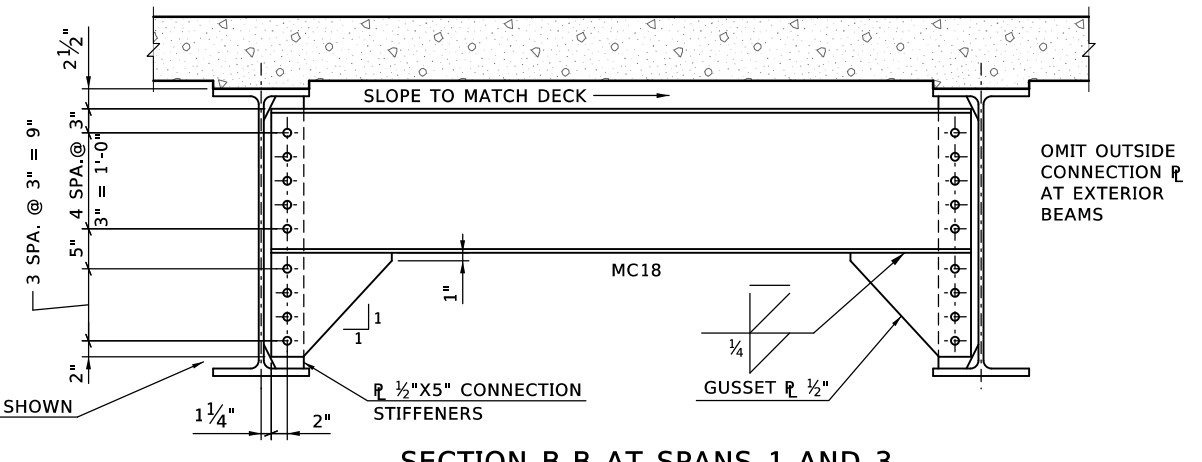
PLAN - INTERMEDIATE DIAPHRAGMS

SCALE: 1" = 1'-0"



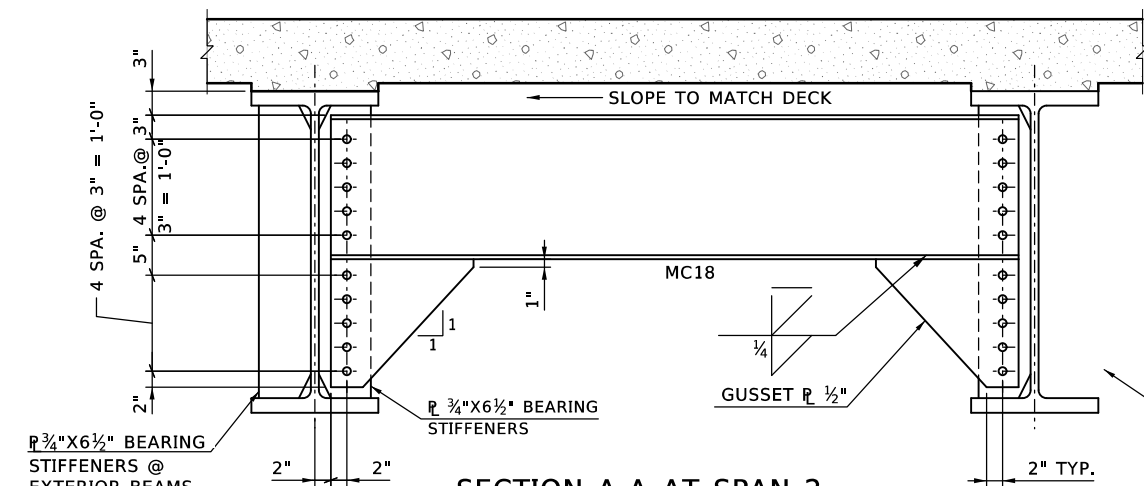
SECTION A-A AT SPANS 1 AND 3

SCALE: 1" = 1'-0"



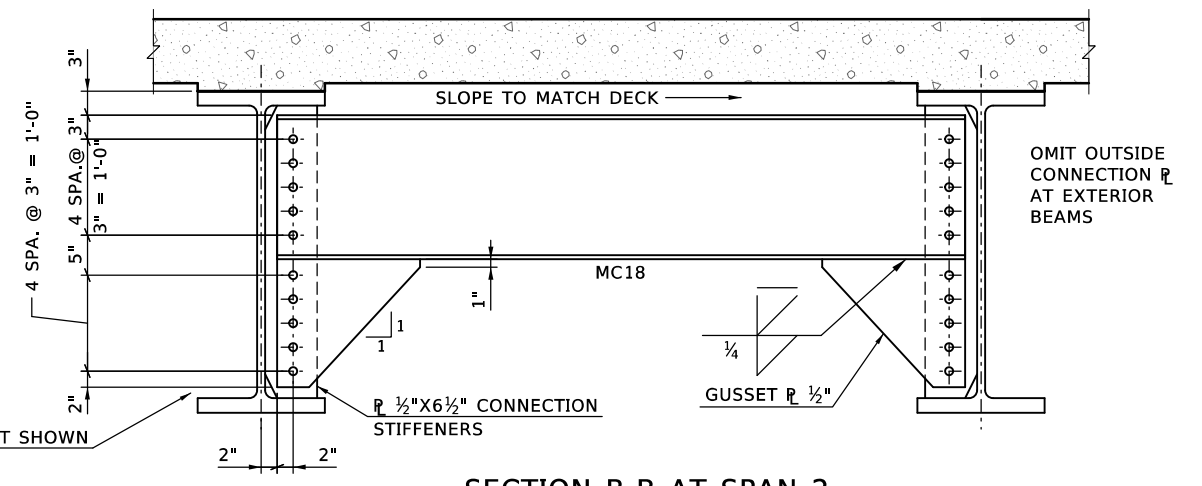
SECTION B-B AT SPANS 1 AND 3

SCALE: 1" = 1'-0"



SECTION A-A AT SPAN 2

SCALE: 1" = 1'-0"



SECTION B-B AT SPAN 2

SCALE: 1" = 1'-0"

INSTALL ALL DIAPHRAGMS AND TIGHTEN ALL BOLTS BEFORE PLACING CONCRETE FOR THE DECK SLAB OR APPLYING OTHER MASSIVE LOADS TO THE BEAMS.

NOTES:

- ALL BOLTED CONNECTIONS SHALL BE 1" DIA. HIGH STRENGTH BOLTS (A325) WITH DIRECT TENSION INDICATORS AS SPECIFIED IN SECTION 506 OF THE STANDARD SPECIFICATIONS. THE "CALIBRATED WRENCH" METHOD SHALL NOT BE USED. ALL BOLT HOLES SHALL BE 1 1/16" DIA.

Design	MKR	7/16	SH 10 OVER BIG CABIN CREEK	CRAIG COUNTY
Drawn	JT	7/16	BRIDGE A	
Checked	KSJ	7/16	SUPERSTRUCTURE DETAILS (1)	
Approved	SAK	9/16		
Squad	BENHAM			

Job Piece No. 29068(04) Sheet No. 48