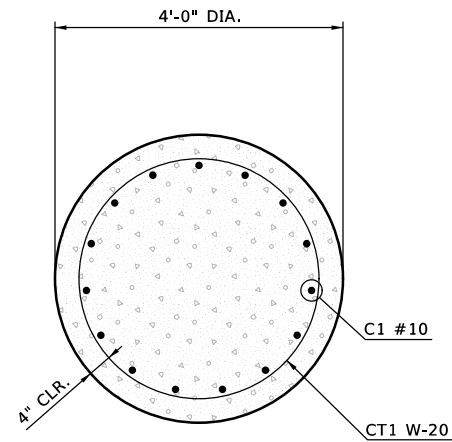
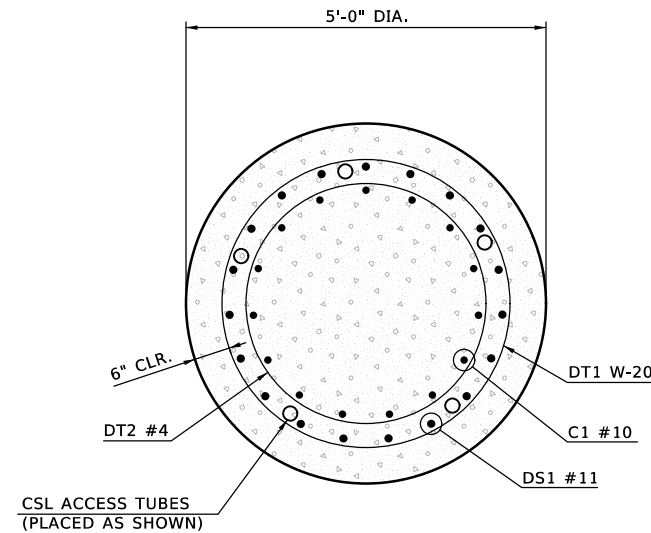


SECTION B-B
SCALE: 3/4" = 1'-0"

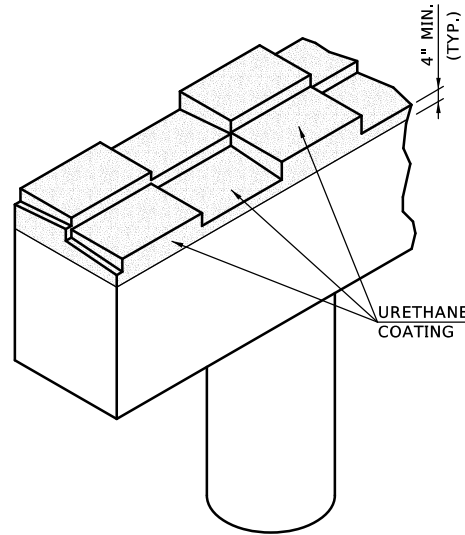
NOTE:
APPLY URETHANE COATING BEFORE
ANY OTHER SURFACE TREATMENTS.



SECTION C-C
SCALE: 3/4" = 1'-0"

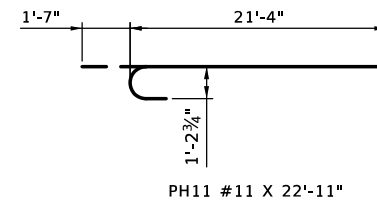
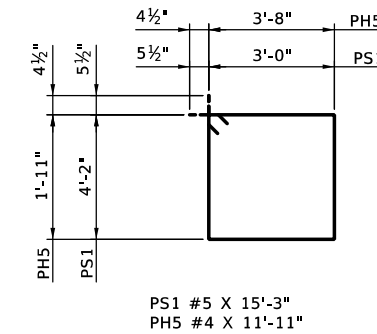


SECTION D-D
SCALE: 3/4" = 1'-0"



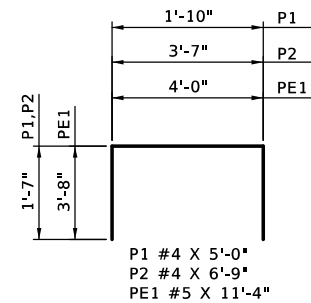
DETAIL OF URETHANE COATING

- COAT ALL EXPOSED CONCRETE ON TOP OF PIER CAP AND 4" MIN. DOWN ON VERTICAL FACE OF PIER CAP WITH URETHANE COATING. SURFACE TO BE SANDBLASTED AND PRIMED AS RECOMMENDED BY THE MANUFACTURER. MASKING SHALL BE USED TO PROVIDE A CLEAN RESULT. URETHANE COATING SHALL BE PAID FOR AT THE UNIT PRICE BID PER SQ. YD. FOR "SPECIAL CONCRETE FINISH". SEE BRIDGE GENERAL NOTES FOR THE SPECIFICATIONS.
- TREAT ALL EXTERIOR VERTICAL SURFACES OF THE PIER CAPS WITH A PENETRATING WATER REPELLENT SURFACE TREATMENT. (URETHANE COATING WILL OVERLAP WATER REPELLENT NEAR TOP OF CAP.)

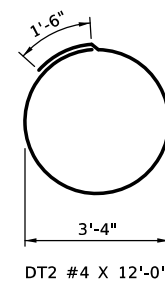


PS1 #5 X 15'-3"
PH5 #4 X 11'-11"

PH11 #11 X 22'-11"



P1 #4 X 5'-0"
P2 #4 X 6'-9"
PE1 #5 X 11'-4"

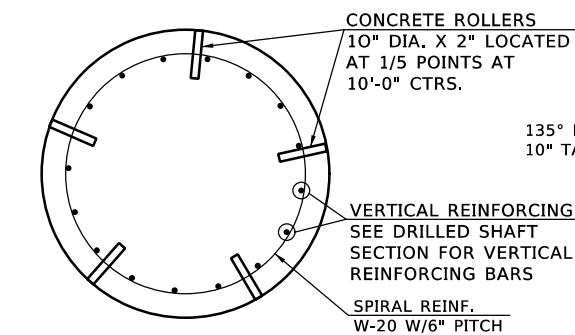


DT2 #4 X 12'-0"

PIER NO. 1 BAR LIST - PHASE 2					
(ONE REQUIRED)					
EPOXY COATED REINFORCING					
MARK	SIZE	QTY.	FORM	LENGTH	REMARKS
C1	#10	15	STR.	22'-11"	
PH5	#4	4	BNT.	11'-11"	
PH11	#11	8	BNT.	22'-11"	
PH12	#11	8	STR.	21'-4"	
PH13	#6	6	STR.	21'-4"	
PE1	#5	3	BNT.	11'-4"	
PS1	#5	42	BNT.	15'-3"	
P1	#4	30	BNT.	5'-0"	
P2	#4	18	BNT.	6'-9"	
PLAIN REINFORCING					
MARK	SIZE	QTY.	FORM	LENGTH	REMARKS
CT1	W20	1	BNT.	247'-0"	
DRILLED SHAFT PLAIN REINFORCING					
MARK	SIZE	QTY.	FORM	LENGTH	REMARKS
DS1	#11	19	STR.	20'-0"	SEE NOTE 1
DT1	W20	1	BNT.	542'-0"	SEE NOTE 1
DT2	#4	11	BNT.	12'-0"	SEE NOTE 1

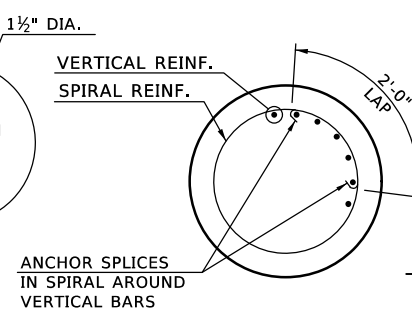
PIER NO. 2 BAR LIST - PHASE 2					
(ONE REQUIRED)					
EPOXY COATED REINFORCING					
MARK	SIZE	QTY.	FORM	LENGTH	REMARKS
C1	#10	15	STR.	22'-11"	
PH5	#4	4	BNT.	11'-11"	
PH11	#11	8	BNT.	22'-11"	
PH12	#11	8	STR.	21'-4"	
PH13	#6	6	STR.	21'-4"	
PE1	#5	3	BNT.	11'-4"	
PS1	#5	42	BNT.	15'-3"	
P1	#4	30	BNT.	5'-0"	
P2	#4	18	BNT.	6'-9"	
PLAIN REINFORCING					
MARK	SIZE	QTY.	FORM	LENGTH	REMARKS
CT1	W20	1	BNT.	246'-0"	
DRILLED SHAFT PLAIN REINFORCING					
MARK	SIZE	QTY.	FORM	LENGTH	REMARKS
DS1	#11	19	STR.	21'-0"	SEE NOTE 1
DT1	W20	1	BNT.	568'-0"	SEE NOTE 1
DT2	#4	11	BNT.	12'-0"	SEE NOTE 1

- NOTE:**
- DRILLED SHAFT BARS ARE FOR INFORMATION PURPOSES ONLY. THE BARS ARE NOT INCLUDED IN THE QUANTITIES, BUT ARE INCLUDED IN THE PRICE BID FOR L.F. OF DRILLED SHAFTS.
 - INCLUDE COST OF CROSSHOLE SONIC ACCESS TUBES IN THE PRICE BID FOR L.F. OF DRILLED SHAFTS.
 - ALL EDGES OF PIER CAP SHALL HAVE A 1/2" CHAMFER EXCEPT FOR PEDESTAL EDGES WHICH SHALL HAVE A 3/4" CHAMFER.

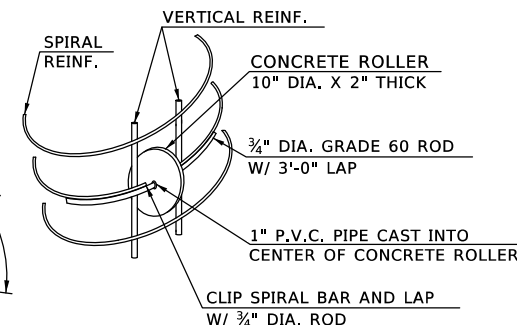


DETAIL OF DRILLED SHAFT ROLLER PLACEMENT

NOTE:
SPIRAL BARS SHALL CONFORM TO
AASHTO M32. SPIRAL BAR LENGTH
INCLUDE LAPS.



SPIRAL SPLICE



DETAIL OF DRILLED SHAFT ROLLER INSTALLATION

NOTE:
CONCRETE USED IN CONCRETE ROLLERS SHALL
HAVE A MINIMUM 28 DAY COMPRESSIVE STRENGTH
OF 4000 P.S.I.. SLAB BOLSTERS, HIGH CHAIRS AND
PLASTIC ROLLERS SHALL NOT BE SUBSTITUTED
FOR THE CONCRETE ROLLERS.

Design	MKR	7/16	SH 10 OVER BIG CABIN CREEK	CRAIG COUNTY
Drawn	JT	7/16	BRIDGE A	
Checked	LJW	7/16		
Approved	SAK	9/16		
Squad	BENHAM			

PIER DETAILS (3)

Job Piece No. 29068(04) Sheet No. 44