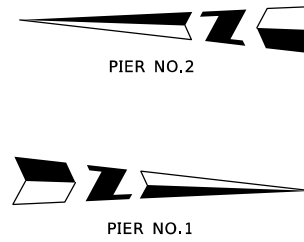
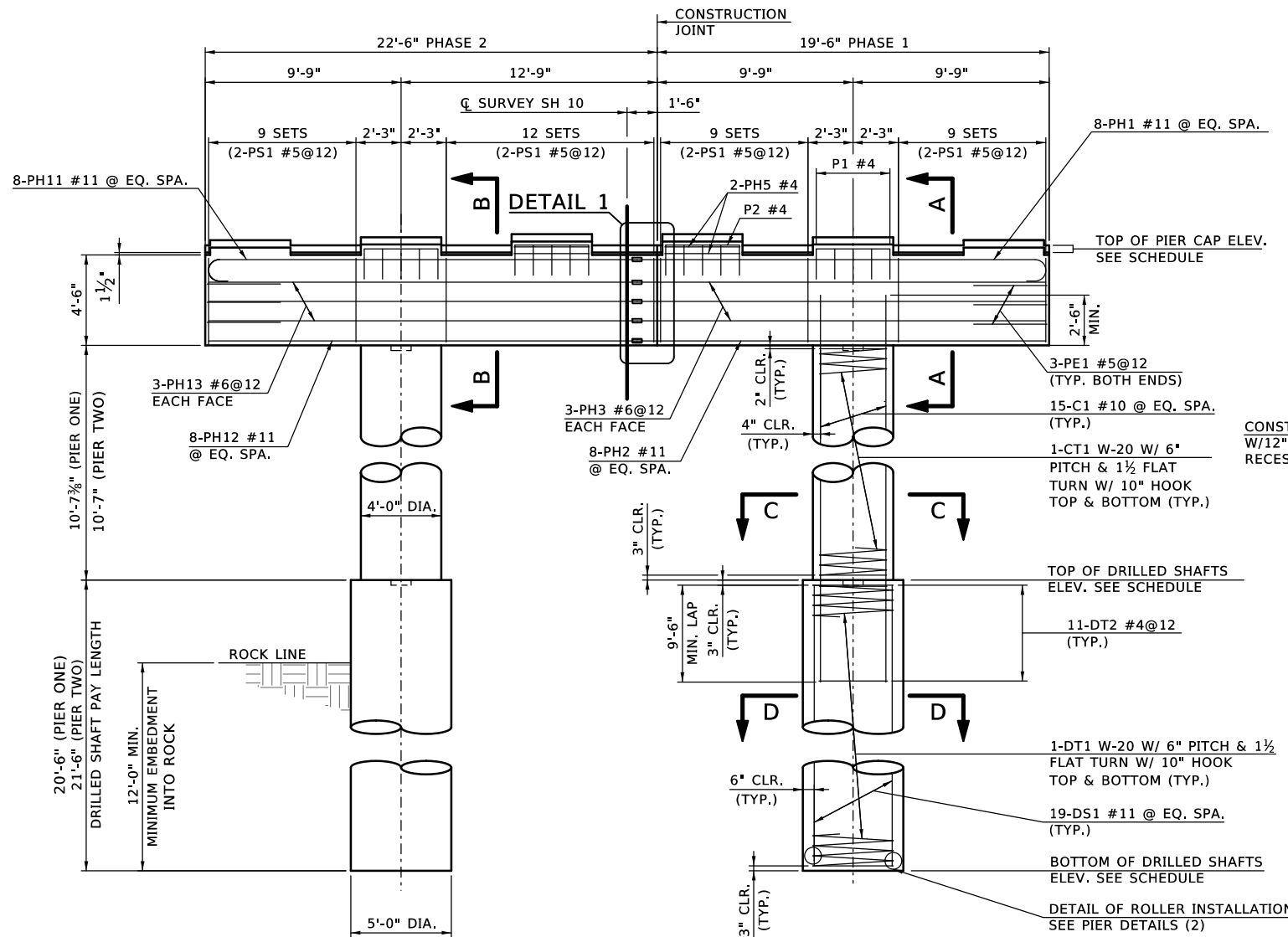


PLAN - PIER NO. 1 & PIER NO.2
SCALE: 1/4" = 1'-0"

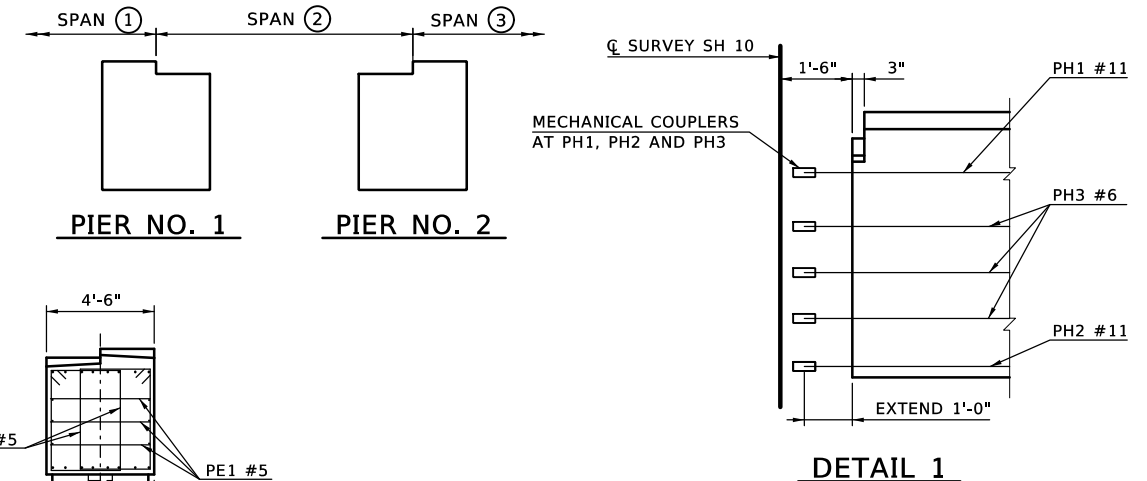


NOTE:
1. ADJUST PH BARS AS NEEDED TO PROVIDE A MINIMUM OF 4" CLEARANCE FOR TREMIE AND CLEARANCE FOR ANCHOR BOLTS.

PIER STATIONS AND ELEVATIONS SCHEDULE				
PIER NO. 1				
PEDESTAL	ELEV. DOWN STA.	ELEV. UP STA.	WORKING POINT STATION	ELEVATION
1	778.85	778.49	1437+49.40	-
2	779.00	778.64	TOP OF PIER DOWN STA.	778.60
3	779.15	778.79	TOP OF PIER UP STA.	778.24
4	779.15	778.79	TOP OF DRILLED SHAFTS	763.00
5	779.00	778.64	BOT. OF DRILLED SHAFTS	742.50
6	778.85	778.49		
PIER NO. 2				
PEDESTAL	ELEV. DOWN STA.	ELEV. UP STA.	WORKING POINT STATION	ELEVATION
1	778.46	778.81	1438+49.40	-
2	778.61	778.96	TOP OF PIER DOWN STA.	778.21
3	778.76	779.11	TOP OF PIER UP STA.	778.56
4	778.76	779.11	TOP OF DRILLED SHAFTS	763.00
5	778.61	778.96	BOT. OF DRILLED SHAFTS	741.50
6	778.46	778.81		



PIER NO. 2 LOOKING UPSTATION
PIER NO. 1 LOOKING DOWNSTATION OPP. HAND
ELEVATION
SCALE: 1/4" = 1'-0"



END VIEW
SCALE: 1/4" = 1'-0"

PIER QUANTITIES - PHASE 1				
ITEM	UNIT	PIER NO. 1	PIER NO. 2	TOTAL
SPECIAL CONCRETE FINISH	SY	16	16	32
CLASS A CONCRETE	CY	21.3	21.3	42.6
REINFORCING STEEL	LB	170	170	340
EPOXY COATED REINFORCING STEEL	LB	4280	4280	8560
① WATER REPELLENT (VISUALLY INSPECTED)	SY	25	25	50
DRILLED SHAFTS 60" DIAMETER	LF	21	22	43
CROSSHOLE SONIC LOGGING	EA			1

PIER QUANTITIES - PHASE 2				
ITEM	UNIT	PIER NO. 1	PIER NO. 2	TOTAL
SPECIAL CONCRETE FINISH	SY	17	17	34
CLASS A CONCRETE	CY	23.7	23.7	47.4
MECHANICAL SPLICES	EA	22	22	44
REINFORCING STEEL	LB	170	170	340
EPOXY COATED REINFORCING STEEL	LB	4470	4470	8940
① WATER REPELLENT (VISUALLY INSPECTED)	SY	27	27	54
DRILLED SHAFTS 60" DIAMETER	LF	21	22	43
CROSSHOLE SONIC LOGGING	EA			1

① INCLUDE VERTICAL FACES OF PIER CAP NOT COVERED BY THE URETHANE COATING AND THE BOTTOM FACE OF PIER CAP CANTILEVERS.

Design	MKR	7/16	SH 10 OVER BIG CABIN CREEK	CRAIG COUNTY
Drawn	RAH	7/16	BRIDGE A	
Checked	LJW	7/16		
Approved	SAK	9/16		
Squad	BENHAM			

PIER DETAILS (1)

Job Piece No. 29068(04) Sheet No. 42